



[Go to Product page](#)

Datasheet for ABIN7140569  
**anti-DEGP12 antibody (AA 25-499)**

1 Image

Overview

Quantity:	100 µg
Target:	DEGP12 (DEG12)
Binding Specificity:	AA 25-499
Reactivity:	Arabidopsis thaliana
Host:	Rabbit
Clonality:	Polyclonal
Conjugate:	This DEGP12 antibody is un-conjugated
Application:	ELISA, Western Blotting (WB)

Product Details

Immunogen:	Recombinant Arabidopsis thaliana Putative protease Do-like 12, mitochondrial protein (25-499AA)
Isotype:	IgG
Cross-Reactivity:	Arabidopsis thaliana
Purification:	>95%, Protein G purified

Target Details

Target:	DEGP12 (DEG12)
Alternative Name:	DEGP12 ( <a href="#">DEG12 Products</a> )
Background:	Background: Putative serine protease.

## Target Details

Aliases: DEGP12 antibody, At3g16550 antibody, MDC8.18Putative protease Do-like 12 antibody, mitochondrial antibody, EC 3.4.21.- antibody

UniProt: [Q9LK70](#)

## Application Details

Application Notes: Recommended dilution: WB:1:1000-1:2000,

Restrictions: For Research Use only

## Handling

Format: Liquid

Buffer: Preservative: 0.03 % Proclin 300  
Constituents: 50 % Glycerol, 0.01M PBS, PH 7.4

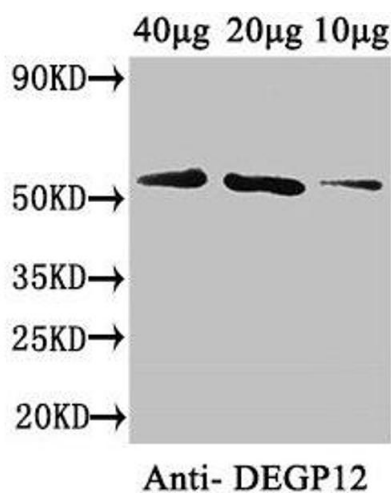
Preservative: ProClin

Precaution of Use: This product contains ProClin: a POISONOUS AND HAZARDOUS SUBSTANCE which should be handled by trained staff only.

Storage: -20 °C,-80 °C

Storage Comment: Upon receipt, store at -20°C or -80°C. Avoid repeated freeze.

## Images



### Western Blotting

**Image 1.** Western Blot Positive WB detected in: Arabidopsis thaliana (40 µg, 20 µg, 10 µg) All lanes: DEGP12 antibody at 3.4 µg/mL Secondary Goat polyclonal to rabbit IgG at 1/50000 dilution Predicted band size: 57 kDa Observed band size: 57 kDa