



Datasheet for ABIN7140904

anti-LOC105923162 antibody (AA 1-136)



[Go to Product page](#)

1 Image

Overview

Quantity:	100 µg
Target:	LOC105923162
Binding Specificity:	AA 1-136
Reactivity:	Malayan pit viper (<i>Calloselasma rhodostoma</i>)
Host:	Rabbit
Clonality:	Polyclonal
Conjugate:	This LOC105923162 antibody is un-conjugated
Application:	ELISA, Western Blotting (WB)

Product Details

Immunogen:	Recombinant <i>Calloselasma rhodostoma</i> Snaclec rhodocytin subunit alpha protein (1-136AA)
Isotype:	IgG
Cross-Reactivity:	Malayan pit viper (<i>Calloselasma rhodostoma</i>)
Purification:	>95%, Protein G purified

Target Details

Target:	LOC105923162
Alternative Name:	Snaclec rhodocytin subunit alpha (LOC105923162 Products)
Background:	Background: Elicits platelet aggregation by the binding to the C-type lectin domain family 1 member B (CLEC1B/CLEC2). Binding leads to tyrosine phosphorylation in the cytoplasmic tail

Target Details

of CLEC1B, which promotes the binding of spleen tyrosine kinase (Syk), subsequent activation of PLC-gamma-2, and platelet activation and aggregation. Binding to GPIIb/alpha (GP1BA) and alpha-2/beta-1 (ITGA2/ITGB1) may also induce aggregation, but this is controversial.

Aliases: antibody, Snaclec rhodocytin subunit alpha antibody, Aggretin alpha chain antibody, Rhodoaggretin subunit alpha antibody

UniProt: [Q9I841](#)

Application Details

Application Notes: Recommended dilution: WB:1:500-1:5000,

Restrictions: For Research Use only

Handling

Format: Liquid

Buffer: Preservative: 0.03 % Proclin 300
Constituents: 50 % Glycerol, 0.01M PBS, pH 7.4

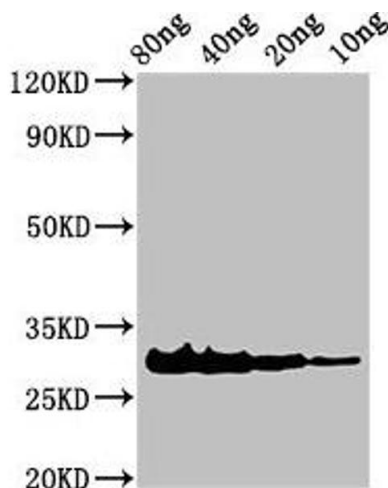
Preservative: ProClin

Precaution of Use: This product contains ProClin: a POISONOUS AND HAZARDOUS SUBSTANCE which should be handled by trained staff only.

Storage: -20 °C,-80 °C

Storage Comment: Upon receipt, store at -20°C or -80°C. Avoid repeated freeze.

Images



Western Blotting

Image 1. Western Blot Positive WB detected in Recombinant protein All lanes: Rhodocytin subunit alpha antibody at 3 µg/mL Secondary Goat polyclonal to rabbit IgG at 1/50000 dilution Predicted band size: 31 kDa Observed band size: 31 kDa