



[Go to Product page](#)

Datasheet for ABIN7140908
anti-RABAC1 antibody (AA 16-299)

1 Image

Overview

Quantity:	100 µL
Target:	RABAC1
Binding Specificity:	AA 16-299
Reactivity:	Candida albicans
Host:	Rabbit
Clonality:	Polyclonal
Conjugate:	This RABAC1 antibody is un-conjugated
Application:	ELISA, Western Blotting (WB)

Product Details

Immunogen:	Recombinant Candida albicans pH-regulated antigen PRA1 protein (16-299AA)
Isotype:	IgG
Cross-Reactivity:	Candida albicans
Purification:	>95%, Protein G purified

Target Details

Target:	RABAC1
Alternative Name:	PRA1 (RABAC1 Products)
Background:	Background: Cell surface protein involved in the host-parasite interaction during candidal infection. With MP65, represents a major component of the biofilm matrix. Sequesters zinc

Target Details

from host tissue and mediates leukocyte adhesion and migration. As a surface protein, binds the two human complement regulators CFH and CFHR1, as well as plasminogen PLG, mediates complement evasion and extra-cellular matrix interaction and/or degradation. As a released protein, enhances complement control in direct vicinity of the yeast and thus generates an additional protective layer which controls host complement attack, assisting the fungus in escaping host surveillance. Binds to host fluid-phase C3 and blocks cleavage of C3 to C3a and C3b, leading to inhibition of complement activation. Mediates also human complement control and complement evasion through binding to C4BPA, another human complement inhibitor, as well as through binding to host integrin alpha-M/beta-2. Decreases complement-mediated adhesion, as well as uptake of *C.albicans* by human macrophages.

Aliases: PRA1 antibody, FBP1 antibody, CAALFM_C406980WA antibody, CaO19.10623 antibody, CaO19.3111 antibody, pH -regulated antigen PRA1 antibody, 58 kDa fibrinogen-binding manno protein antibody

UniProt: [P87020](#)

Pathways: [Chromatin Binding](#)

Application Details

Application Notes: Recommended dilution: WB:1:500-1:5000,

Restrictions: For Research Use only

Handling

Format: Liquid

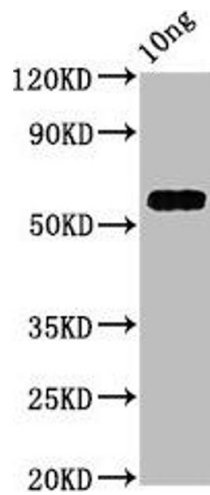
Buffer: Preservative: 0.03 % Proclin 300
Constituents: 50 % Glycerol, 0.01M PBS, pH 7.4

Preservative: ProClin

Precaution of Use: This product contains ProClin: a POISONOUS AND HAZARDOUS SUBSTANCE which should be handled by trained staff only.

Storage: -20 °C,-80 °C

Storage Comment: Upon receipt, store at -20°C or -80°C. Avoid repeated freeze.



Western Blotting

Image 1. Western Blot Positive WB detected in Recombinant protein All lanes: PRA1 antibody at 4.7 $\mu\text{g}/\text{mL}$ Secondary Goat polyclonal to rabbit IgG at 1/50000 dilution Predicted band size: 55 kDa Observed band size: 55 kDa