



[Go to Product page](#)

Datasheet for ABIN7140925

## anti-LOC100280979 antibody (AA 2-160)

### 1 Image

#### Overview

Quantity:	100 µg
Target:	LOC100280979
Binding Specificity:	AA 2-160
Reactivity:	Carpinus betulus (European hornbeam) (Carpinus caucasica)
Host:	Rabbit
Clonality:	Polyclonal
Conjugate:	This LOC100280979 antibody is un-conjugated
Application:	ELISA, Western Blotting (WB)

#### Product Details

Immunogen:	Recombinant Carpinus betulus Major pollen allergen Car b 1 isoforms 1A and 1B protein (2-160AA)
Isotype:	IgG
Cross-Reactivity:	Carpinus betulus (European hornbeam) (Carpinus caucasica)
Purification:	>95%, Protein G purified

#### Target Details

Target:	LOC100280979
Alternative Name:	Major pollen allergen Car b 1 isoforms 1A and 1B ( <a href="#">LOC100280979 Products</a> )
Background:	Major pollen allergen Car b 1 isoforms 1A and 1B antibody, Allergen Car b I antibody, allergen

## Target Details

Car b 1 antibody

UniProt: [P38949](#)

## Application Details

Application Notes: Recommended dilution: WB:1:500-1:2000,

Restrictions: For Research Use only

## Handling

Format: Liquid

Buffer: Preservative: 0.03 % Proclin 300  
Constituents: 50 % Glycerol, 0.01M PBS, PH 7.4

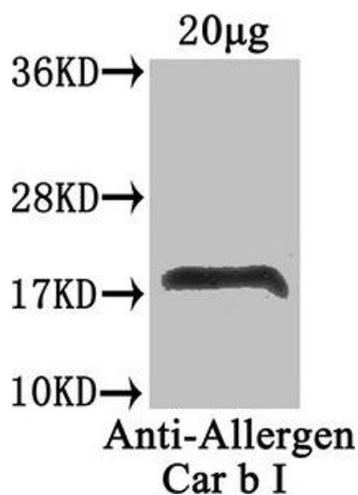
Preservative: ProClin

Precaution of Use: This product contains ProClin: a POISONOUS AND HAZARDOUS SUBSTANCE which should be handled by trained staff only.

Storage: -20 °C,-80 °C

Storage Comment: Upon receipt, store at -20°C or -80°C. Avoid repeated freeze.

## Images



### Western Blotting

**Image 1.** Western Blot Positive WB detected in: *Carpinus betulus* (20 µg) All lanes: Allergen Car b I antibody at 4 µg/mL Secondary Goat polyclonal to rabbit IgG at 1/50000 dilution Predicted band size: 18 kDa Observed band size: 18 kDa