

Datasheet for ABIN7140934
anti-CD59 antibody

3 Images

[Go to Product page](#)

Overview

Quantity:	100 µg
Target:	CD59
Reactivity:	Human
Host:	Mouse
Clonality:	Monoclonal
Conjugate:	This CD59 antibody is un-conjugated
Application:	Western Blotting (WB), Immunohistochemistry (IHC), ELISA

Product Details

Immunogen:	Recombinant CD59 Protein
Clone:	2E11B6
Isotype:	IgG1, IgG1 kappa
Cross-Reactivity:	Human
Purification:	Protein G purified

Target Details

Target:	CD59
Alternative Name:	CD59 (CD59 Products)
Background:	Background: CD59, also named as MIC11, MIN1, MIN2, MIN3, MSK21, MIRL, MACIF, HRF20 and 1F5 antigen, is a cell surface molecule glycoprotein with MW 18-25kd. It acts as a

Target Details

determinant of proximal-distal cell identity. CD59 acts by binding to the C8 and/or C9 complements of the assembling membrane attack complex (MAC), thereby preventing incorporation of the multiple copies of C9 required for complete formation of the osmolytic pore. It is involved in signal transduction for T-cell activation complexed to a protein tyrosine kinase.

Aliases: CD59 glycoprotein,HRF-20,MAC-IP,MACIF,MIRL,CD59

UniProt: [P13987](#)

Pathways: [Complement System](#)

Application Details

Application Notes: Recommended dilution:WB:1:500-1:5000,IHC:1:50-1:500,

Restrictions: For Research Use only

Handling

Format: Liquid

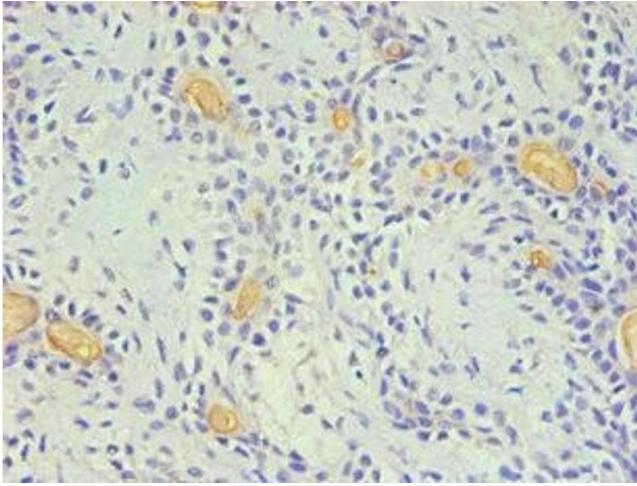
Buffer: Preservative: 0.03 % Proclin 300
Constituents: 50 % Glycerol, 0.01M PBS, PH 7.4

Preservative: ProClin

Precaution of Use: This product contains ProClin: a POISONOUS AND HAZARDOUS SUBSTANCE which should be handled by trained staff only.

Storage: -20 °C,-80 °C

Storage Comment: Upon receipt, store at -20°C or -80°C. Avoid repeated freeze.



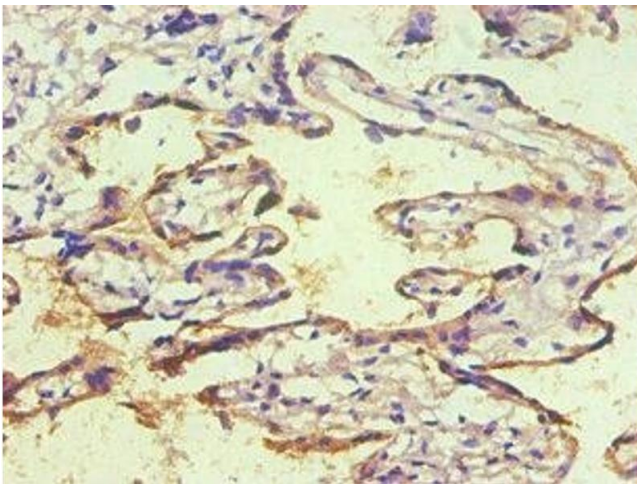
Immunohistochemistry

Image 1. Immunohistochemical of paraffin-embedded Human breast cancer using ABIN7140934 (2E11-2B5) at dilution of 1:200.



Western Blotting

Image 2. All lanes: Mouse Anti-CD59 monoclonal antibody at 1 µg/mL Lane 1:K562 Predicted band size : 15kd Observed band size : 22kd



Immunohistochemistry

Image 3. Immunohistochemical of paraffin-embedded human placenta tissue using ABIN7140934 (2E11-2B5) at dilution of 1:200.