



[Go to Product page](#)

Datasheet for ABIN7141187

anti-CGRP antibody (AA 85-116)

1 Image

Overview

Quantity:	100 µg
Target:	CGRP (CALCA)
Binding Specificity:	AA 85-116
Reactivity:	Dog
Host:	Rabbit
Clonality:	Polyclonal
Conjugate:	This CGRP antibody is un-conjugated
Application:	ELISA, Western Blotting (WB)

Product Details

Immunogen:	Recombinant Dog Calcitonin protein (85-116AA)
Isotype:	IgG
Cross-Reactivity:	Dog
Purification:	>95%, Protein G purified

Target Details

Target:	CGRP (CALCA)
Alternative Name:	CALCA (CALCA Products)
Background:	Background: Causes a rapid but short-lived drop in the level of calcium and phosphate in blood by promoting the incorporation of those ions in the bones.

Target Details

Aliases: CALCA antibody, CALC antibody, CCALCI antibody, Calcitonin antibody

UniProt: [P41547](#)

Pathways: [Hormone Activity](#), [cAMP Metabolic Process](#), [Myometrial Relaxation and Contraction](#), [Regulation of G-Protein Coupled Receptor Protein Signaling](#), [Skeletal Muscle Fiber Development](#), [Feeding Behaviour](#)

Application Details

Application Notes: Recommended dilution: WB:1:500-1:5000,

Restrictions: For Research Use only

Handling

Format: Liquid

Buffer: Preservative: 0.03 % Proclin 300
Constituents: 50 % Glycerol, 0.01M PBS, pH 7.4

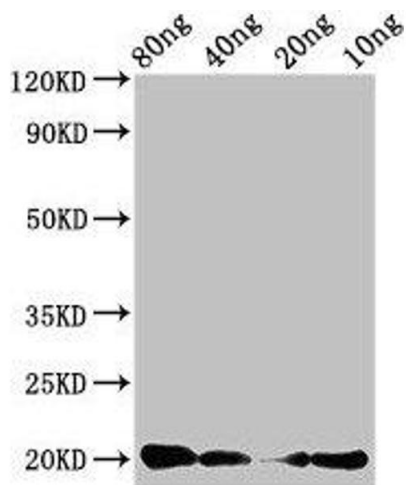
Preservative: ProClin

Precaution of Use: This product contains ProClin: a POISONOUS AND HAZARDOUS SUBSTANCE which should be handled by trained staff only.

Storage: -20 °C,-80 °C

Storage Comment: Upon receipt, store at -20°C or -80°C. Avoid repeated freeze.

Images



Western Blotting

Image 1. Western Blot Positive WB detected in Recombinant protein All lanes: CALCA antibody at 3 µg/mL
Secondary Goat polyclonal to rabbit IgG at 1/50000 dilution
Predicted band size: 20 kDa Observed band size: 20 kDa