



[Go to Product page](#)

Datasheet for ABIN7141527

anti-glsA1 antibody (AA 1-310)

1 Image

Overview

Quantity:	100 µg
Target:	glsA1 (GLS-A1)
Binding Specificity:	AA 1-310
Reactivity:	E. coli
Host:	Rabbit
Clonality:	Polyclonal
Conjugate:	This glsA1 antibody is un-conjugated
Application:	ELISA, Western Blotting (WB)

Product Details

Immunogen:	Recombinant Escherichia coli Glutaminase 1 protein (1-310AA)
Isotype:	IgG
Cross-Reactivity:	E. coli
Purification:	>95%, Protein G purified

Target Details

Target:	glsA1 (GLS-A1)
Alternative Name:	glsA1 (GLS-A1 Products)
Background:	GlsA1 antibody, ybaS antibody, b0485 antibody, JW0474Glutaminase 1 antibody, EC 3.5.1.2 antibody

Target Details

UniProt: [P77454](#)

Application Details

Application Notes: Recommended dilution: WB:1:1000-1:5000,

Restrictions: For Research Use only

Handling

Format: Liquid

Buffer: Preservative: 0.03 % Proclin 300
Constituents: 50 % Glycerol, 0.01M PBS, PH 7.4

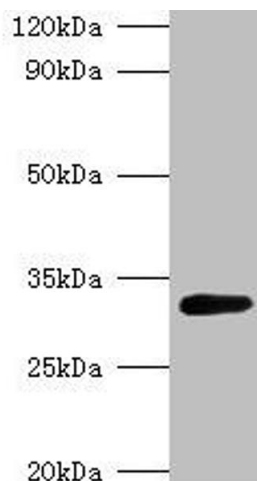
Preservative: ProClin

Precaution of Use: This product contains ProClin: a POISONOUS AND HAZARDOUS SUBSTANCE which should be handled by trained staff only.

Storage: -20 °C,-80 °C

Storage Comment: Upon receipt, store at -20°C or -80°C. Avoid repeated freeze.

Images



Western Blotting

Image 1. Western blot All lanes: glsA1 antibody at 2 µg/mL + DH5a whole cell lysate Secondary Goat polyclonal to rabbit IgG at 1/10000 dilution Predicted band size: 33 kDa Observed band size: 33 kDa