



[Go to Product page](#)

Datasheet for ABIN7141583
anti-RBM8A antibody (AA 212-553)

1 Image

Overview

Quantity:	100 µg
Target:	RBM8A
Binding Specificity:	AA 212-553
Reactivity:	E. coli
Host:	Rabbit
Clonality:	Polyclonal
Conjugate:	This RBM8A antibody is un-conjugated
Application:	Western Blotting (WB), ELISA

Product Details

Immunogen:	Recombinant Escherichia coli Methyl-accepting chemotaxis protein II protein (212-553AA)
Isotype:	IgG
Cross-Reactivity:	E. coli
Purification:	>95%, Protein G purified

Target Details

Target:	RBM8A
Alternative Name:	tar (RBM8A Products)
Background:	Background: Receptor for the attractant L-aspartate and related amino and dicarboxylic acids. Tar also mediates taxis to the attractant maltose via an interaction with the periplasmic

Target Details

maltose binding protein. Tar mediates taxis away from the repellents cobalt and nickel. Chemotactic-signal transducers respond to changes in the concentration of attractants and repellents in the environment, transduce a signal from the outside to the inside of the cell, and facilitate sensory adaptation through the variation of the level of methylation. Attractants increase the level of methylation while repellents decrease the level of methylation, the methyl groups are added by the methyltransferase CheR and removed by the methylesterase CheB. Aliases: tar antibody, cheM antibody, b1886 antibody, JW1875Methyl-accepting chemotaxis protein II antibody, MCP-II antibody, Aspartate chemoreceptor protein antibody

UniProt: [P07017](#)

Application Details

Application Notes: Recommended dilution: WB:1:1000-1:5000,

Restrictions: For Research Use only

Handling

Format: Liquid

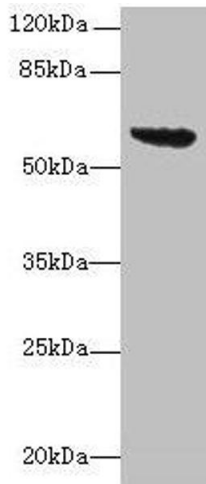
Buffer: Preservative: 0.03 % Proclin 300
Constituents: 50 % Glycerol, 0.01M PBS, PH 7.4

Preservative: ProClin

Precaution of Use: This product contains ProClin: a POISONOUS AND HAZARDOUS SUBSTANCE which should be handled by trained staff only.

Storage: -20 °C,-80 °C

Storage Comment: Upon receipt, store at -20°C or -80°C. Avoid repeated freeze.



Western Blotting

Image 1. Western blot All lanes: tar antibody at 16 $\mu\text{g}/\text{mL}$ + DH5a whole cell lysate Secondary Goat polyclonal to rabbit IgG at 1/10000 dilution Predicted band size: 60 kDa Observed band size: 60 kDa