



Datasheet for ABIN7141674 **anti-proPSA antibody (AA 2-792)**



[Go to Product page](#)

1 Image

Overview

Quantity:	100 µL
Target:	proPSA
Binding Specificity:	AA 2-792
Reactivity:	E. coli
Host:	Rabbit
Clonality:	Polyclonal
Conjugate:	This proPSA antibody is un-conjugated
Application:	ELISA, Western Blotting (WB)

Product Details

Immunogen:	Recombinant Escherichia coli Phosphoenolpyruvate synthase protein (2-792AA)
Isotype:	IgG
Cross-Reactivity:	E. coli
Purification:	>95%, Protein G purified

Target Details

Target:	proPSA
Alternative Name:	ppsA (proPSA Products)
Background:	Background: Catalyzes the phosphorylation of pyruvate to phosphoenolpyruvate. Aliases: ppsA antibody, pps antibody, b1702 antibody, JW1692Phosphoenolpyruvate synthase

Target Details

antibody, PEP synthase antibody, EC 2.7.9.2 antibody, Pyruvate antibody, water dikinase antibody

UniProt: [P23538](#)

Application Details

Application Notes: Recommended dilution: WB:1:1000-1:5000,

Restrictions: For Research Use only

Handling

Format: Liquid

Buffer: Preservative: 0.03 % Proclin 300
Constituents: 50 % Glycerol, 0.01M PBS, pH 7.4

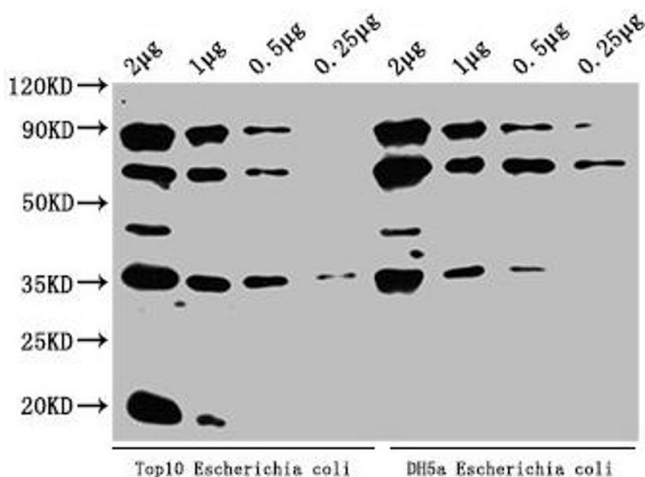
Preservative: ProClin

Precaution of Use: This product contains ProClin: a POISONOUS AND HAZARDOUS SUBSTANCE which should be handled by trained staff only.

Storage: -20 °C,-80 °C

Storage Comment: Upon receipt, store at -20°C or -80°C. Avoid repeated freeze.

Images



Western Blotting

Image 1. Western Blot Positive WB detected in: Top10 Escherichia coli lysate, DH5a Escherichia coli lysate All lanes: ppsA antibody at 1:2000 Secondary Goat polyclonal to rabbit IgG at 1/50000 dilution Predicted band size: 88 kDa Observed band size: 88 kDa