

Datasheet for ABIN7141869

**anti-GDF15 antibody****1** Image[Go to Product page](#)

## Overview

Quantity:	100 µg
Target:	GDF15
Reactivity:	Human
Host:	Mouse
Clonality:	Monoclonal
Conjugate:	This GDF15 antibody is un-conjugated
Application:	ELISA, Immunohistochemistry (IHC)

## Product Details

Immunogen:	Recombinant GDF15 Protein
Clone:	5E1A5
Isotype:	IgG2a
Cross-Reactivity:	Human
Purification:	Protein G purified

## Target Details

Target:	GDF15
Alternative Name:	GDF15 ( <a href="#">GDF15 Products</a> )
Background:	Background: Growth differentiation factor 15 (GDF15) is a protein belonging to the transforming growth factor beta superfamily that has a role in regulating inflammatory and apoptotic

## Target Details

pathways in injured tissues and during disease processes.[1] GDF15 is also known as TGF-PL, MIC-1, PDF, PLAB, and PTGFB.[2] GDF15 mRNA is most abundant in the liver, with lower levels seen in some other tissues. Its expression in liver can be significantly up-regulated in during injury of organs such as liver, kidney, heart and lung.

Aliases: Growth/differentiation factor 15, GDF-15, MIC1, PDF, PLAB, PTGFB

UniProt: [Q99988](#)

Pathways: [SARS-CoV-2 Protein Interactome](#)

## Application Details

Application Notes: Recommended dilution:IHC:1:50-1:500,

Restrictions: For Research Use only

## Handling

Format: Liquid

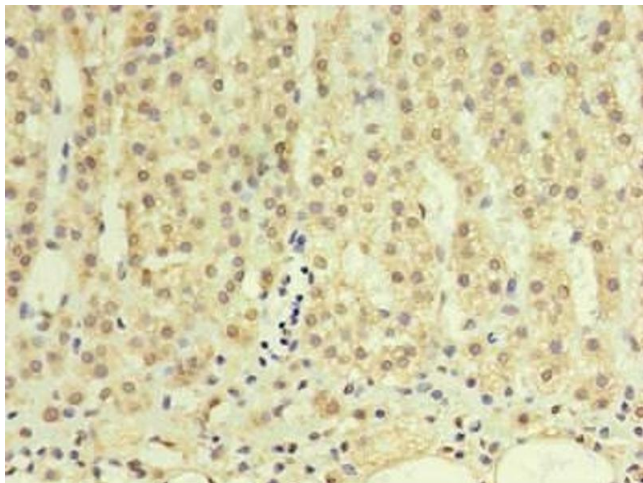
Buffer: Preservative: 0.03 % Proclin 300  
Constituents: 50 % Glycerol, 0.01M PBS, PH 7.4

Preservative: ProClin

Precaution of Use: This product contains ProClin: a POISONOUS AND HAZARDOUS SUBSTANCE which should be handled by trained staff only.

Storage: -20 °C,-80 °C

Storage Comment: Upon receipt, store at -20°C or -80°C. Avoid repeated freeze.



#### Immunohistochemistry

**Image 1.** Immunohistochemistry of paraffin-embedded human adrenal gland using ABIN7141869 in 30 µg/mL dilute concentrations.