



[Go to Product page](#)

Datasheet for ABIN7141875

anti-GFP antibody

7 Images

Overview

Quantity:	100 µg
Target:	GFP
Reactivity:	Please inquire
Host:	Mouse
Clonality:	Monoclonal
Conjugate:	This GFP antibody is un-conjugated
Application:	Western Blotting (WB), ELISA, Immunofluorescence (IF), Immunoprecipitation (IP), Flow Cytometry (FACS)

Product Details

Immunogen:	Recombinant GFP Protein
Clone:	6C11C11
Isotype:	IgG2b
Purification:	Protein G purified

Target Details

Target:	GFP
Alternative Name:	GFP (GFP Products)
Target Type:	Viral Protein
Background:	Background: The green fluorescent protein (GFP) is a protein that exhibit bright green

Target Details

fluorescence when exposed to blue light. The protein is in the shape of a cylinder, comprising 11 strands of beta-sheet with an alpha-helix inside and short helical segments on the ends of the cylinder. Inward-facing sidechains of the barrel induce specific cyclization reactions in the tripeptide Ser65-Tyr66-Gly67 that lead to chromophore formation. Its amazing ability to generate a highly visible, efficiently emitting internal fluorophore is both intrinsically fascinating and tremendously valuable. The green-fluorescent protein (GFP) of the jellyfish *Aequorea victoria* has always been used as a universal reporter in a broad range of heterologous living cells and organisms. GFP has become well established as a marker of gene expression and protein targeting in intact cells and organisms.

Aliases: CFP, eGFP, eYFP, GFP, GFP tag, YFP

Application Details

Application Notes: Recommended dilution: WB:1:50000-1:6400000, IF:1:50-1:200, FC:1:100-1:300, IP:1 μ L-2 μ L,

Restrictions: For Research Use only

Handling

Format: Liquid

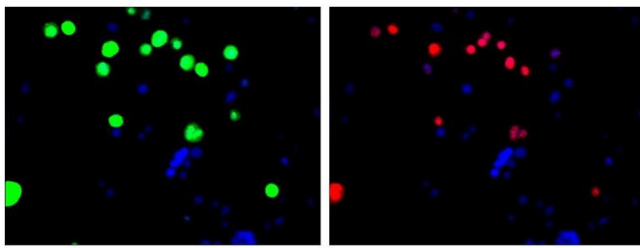
Buffer: Preservative: 0.03 % Proclin 300
Constituents: 50 % Glycerol, 0.01M PBS, PH 7.4

Preservative: ProClin

Precaution of Use: This product contains ProClin: a POISONOUS AND HAZARDOUS SUBSTANCE which should be handled by trained staff only.

Storage: -20 °C,-80 °C

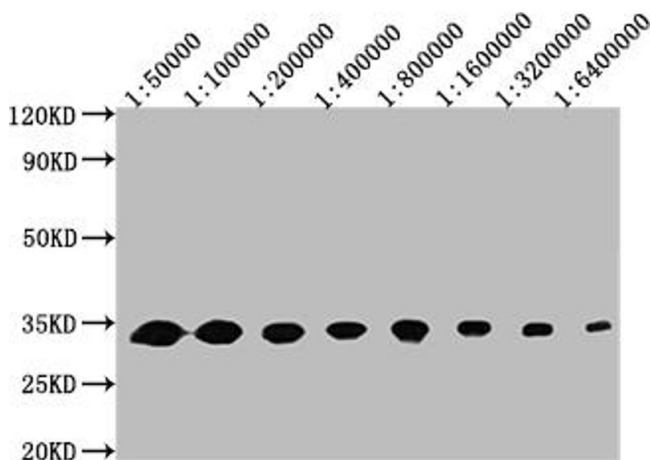
Storage Comment: Upon receipt, store at -20°C or -80°C. Avoid repeated freeze.



1: 293F cells transfected with GFP
 2: 293F cells transfected with GFP stained with CSB-MA000051M1m

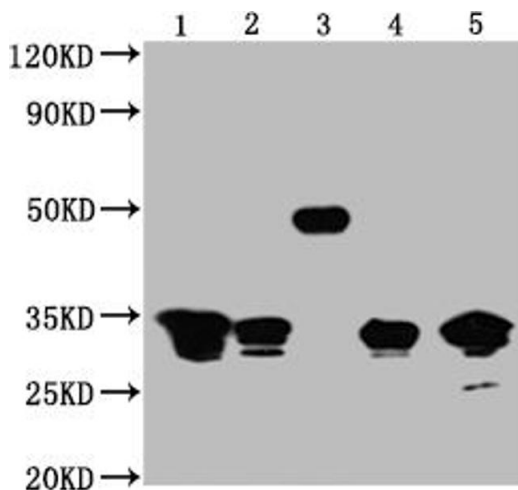
Immunofluorescence

Image 1. Immunofluorescence staining of 293F cells transfected with GFP with ABIN7141875 at 1:100, counterstained with DAPI. The cells were fixed in 4 % formaldehyde, permeated by 0.2 % TritonX-100, and blocked in 10 % normal Goat Serum. The cells were then incubated with the antibody overnight at 4 °C. Nuclear DNA was labeled in blue with DAPI. The secondary antibody was R-PE-conjugated Goat Anti-Mouse IgG(H+L).



Western Blotting

Image 2. Western Blot Positive WB detected in: 50 ng recombinant protein All lanes: GFP antibody at 1:50000, 1:100000, 1:200000, 1:400000, 1:800000, 1:1600000, 1:3200000, 1:6400000 Secondary Goat polyclonal to mouse IgG at 1/50000 dilution Predicted band size: 32 KDa Observed band size: 32 KDa Exposure time:5 min



Western Blotting

Image 3. Western Blot Positive WB detected in: 1,2,3 and 4 are Recombinant proteins with GFP tag for 50 ng, 5, 293F whole cell lysate transfected with GFP for 5 µg All lanes GFP antibody at 1:5000 Secondary Goat polyclonal to mouse IgG at 1/50000 dilution Predicted band size:1,2,3,4 and 5 is 32,32,50,32,32 KDa respectively Observed band size: 32,32,50,32,32 KDa Exposure time:1 min

Please check the [product details page](#) for more images. Overall 7 images are available for ABIN7141875.