

Datasheet for ABIN714191
anti-FES antibody (AA 121-220)[Go to Product page](#)

1 Image

Overview

Quantity:	100 µL
Target:	FES
Binding Specificity:	AA 121-220
Reactivity:	Human
Host:	Rabbit
Clonality:	Polyclonal
Conjugate:	This FES antibody is un-conjugated
Application:	Western Blotting (WB), ELISA, Immunohistochemistry (Paraffin-embedded Sections) (IHC (p)), Immunofluorescence (Cultured Cells) (IF (cc)), Immunofluorescence (Paraffin-embedded Sections) (IF (p)), Immunohistochemistry (Frozen Sections) (IHC (fro))

Product Details

Immunogen:	KLH conjugated synthetic peptide derived from human FES
Isotype:	IgG
Cross-Reactivity:	Human
Predicted Reactivity:	Mouse,Rat,Dog,Pig,Rabbit
Purification:	Purified by Protein A.

Target Details

Target:	FES
---------	-----

Target Details

Alternative Name:	FES (FES Products)
Background:	<p>Synonyms: FPS, Tyrosine-protein kinase Fes/Fps, Feline sarcoma/Fujinami avian sarcoma oncogene homolog, Proto-oncogene c-Fes, Proto-oncogene c-Fps, p93c-fes, FES</p> <p>Background: Tyrosine-protein kinase that acts downstream of cell surface receptors and plays a role in the regulation of the actin cytoskeleton, microtubule assembly, cell attachment and cell spreading. Plays a role in FCER1 (high affinity immunoglobulin epsilon receptor)-mediated signaling in mast cells. Acts down-stream of the activated FCER1 receptor and the mast/stem cell growth factor receptor KIT. Plays a role in the regulation of mast cell degranulation. Plays a role in the regulation of cell differentiation and promotes neurite outgrowth in response to NGF signaling. Plays a role in cell scattering and cell migration in response to HGF-induced activation of EZR. Phosphorylates BCR and down-regulates BCR kinase activity. Phosphorylates HCLS1/HS1, PECAM1, STAT3 and TRIM28.</p>
Gene ID:	2242
UniProt:	P07332
Pathways:	Regulation of Leukocyte Mediated Immunity , Positive Regulation of Immune Effector Process , Signaling Events mediated by VEGFR1 and VEGFR2

Application Details

Application Notes:	WB 1:300-5000 ELISA 1:500-1000 IHC-P 1:200-400 IHC-F 1:100-500 IF(IHC-P) 1:50-200 IF(IHC-F) 1:50-200 IF(ICC) 1:50-200
Restrictions:	For Research Use only

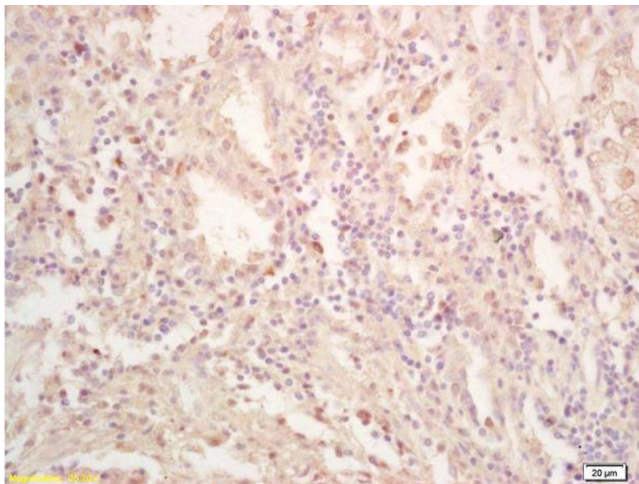
Handling

Format:	Liquid
Concentration:	1 µg/µL
Buffer:	0.01M TBS(pH 7.4) with 1 % BSA, 0.02 % Proclin300 and 50 % Glycerol.
Preservative:	ProClin

Handling

Precaution of Use:	This product contains ProClin: a POISONOUS AND HAZARDOUS SUBSTANCE, which should be handled by trained staff only.
Storage:	4 °C, -20 °C
Storage Comment:	Shipped at 4°C. Store at -20°C for one year. Avoid repeated freeze/thaw cycles.
Expiry Date:	12 months

Images



Immunohistochemistry

Image 1. Formalin-fixed and paraffin embedded human gastric carcinoma labeled with Rabbit Anti FES Polyclonal Antibody, Unconjugated (ABIN714191) at 1:200 followed by conjugation to the secondary antibody and DAB staining