



[Go to Product page](#)

Datasheet for ABIN7141976

## anti-Prolactin antibody (AA 31-229)

### 1 Image

#### Overview

Quantity:	100 µg
Target:	Prolactin (PRL)
Binding Specificity:	AA 31-229
Reactivity:	Horse
Host:	Rabbit
Clonality:	Polyclonal
Conjugate:	This Prolactin antibody is un-conjugated
Application:	ELISA, Western Blotting (WB)

#### Product Details

Immunogen:	Recombinant Horse Prolactin protein (31-229AA)
Isotype:	IgG
Cross-Reactivity:	Horse
Purification:	>95%, Protein G purified

#### Target Details

Target:	Prolactin (PRL)
Alternative Name:	PRL ( <a href="#">PRL Products</a> )
Background:	Background: Prolactin acts primarily on the mammary gland by promoting lactation. Aliases: PRL antibody, Prolactin antibody, PRL antibody

## Target Details

UniProt: [P12420](#)

Pathways: [JAK-STAT Signaling](#), [Peptide Hormone Metabolism](#), [Response to Growth Hormone Stimulus](#), [Protein targeting to Nucleus](#)

## Application Details

Application Notes: Recommended dilution: WB:1:2000-1:10000,

Restrictions: For Research Use only

## Handling

Format: Liquid

Buffer: Preservative: 0.03 % Proclin 300  
Constituents: 50 % Glycerol, 0.01M PBS, pH 7.4

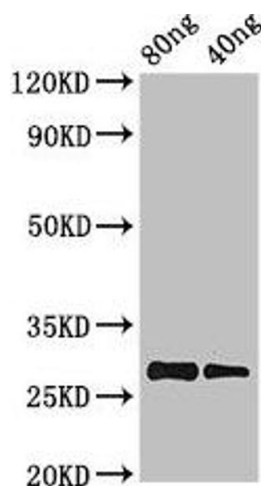
Preservative: ProClin

Precaution of Use: This product contains ProClin: a POISONOUS AND HAZARDOUS SUBSTANCE which should be handled by trained staff only.

Storage: -20 °C,-80 °C

Storage Comment: Upon receipt, store at -20°C or -80°C. Avoid repeated freeze.

## Images



### Western Blotting

**Image 1.** Western Blot Positive WB detected in Recombinant protein All lanes: PRL antibody at 2.8 µg/mL Secondary Goat polyclonal to rabbit IgG at 1/50000 dilution predicted band size: 28 kDa observed band size: 28 kDa