

Datasheet for ABIN7142045

anti-Phospholipase C beta 2 antibody (AA 1031-1185)[Go to Product page](#)**2** Images

Overview

Quantity:	100 µL
Target:	Phospholipase C beta 2 (PLCb2)
Binding Specificity:	AA 1031-1185
Reactivity:	Human
Host:	Rabbit
Clonality:	Polyclonal
Conjugate:	This Phospholipase C beta 2 antibody is un-conjugated
Application:	Immunohistochemistry (IHC), ELISA, Immunofluorescence (IF)

Product Details

Immunogen:	Recombinant Human 1-phosphatidylinositol 4,5-bisphosphate phosphodiesterase beta-2 protein (1031-1185aa)
Isotype:	IgG
Cross-Reactivity:	Human
Purification:	>95%, Protein G purified

Target Details

Target:	Phospholipase C beta 2 (PLCb2)
Alternative Name:	PLCB2 (PLCb2 Products)
Background:	Background: The production of the second messenger molecules diacylglycerol (DAG) and

Target Details

inositol 1,4,5-trisphosphate (IP3) is mediated by activated phosphatidylinositol-specific phospholipase C enzymes.

Aliases: 1-phosphatidylinositol 4,5-bisphosphate phosphodiesterase beta-2 (EC 3.1.4.11) (Phosphoinositide phospholipase C-beta-2) (Phospholipase C-beta-2) (PLC-beta-2), PLCB2

UniProt: [Q00722](#)

Pathways: [WNT Signaling](#), [Thyroid Hormone Synthesis](#), [CXCR4-mediated Signaling Events](#), [G-protein mediated Events](#), [Thromboxane A2 Receptor Signaling](#)

Application Details

Application Notes: Recommended dilution: IHC:1:100-1:500, IF:1:100-1:500,

Restrictions: For Research Use only

Handling

Format: Liquid

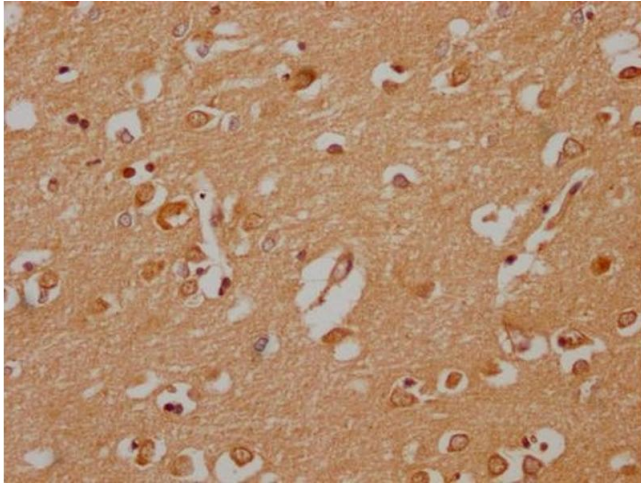
Buffer: Preservative: 0.03 % Proclin 300
Constituents: 50 % Glycerol, 0.01M PBS, pH 7.4

Preservative: ProClin

Precaution of Use: This product contains ProClin: a POISONOUS AND HAZARDOUS SUBSTANCE which should be handled by trained staff only.

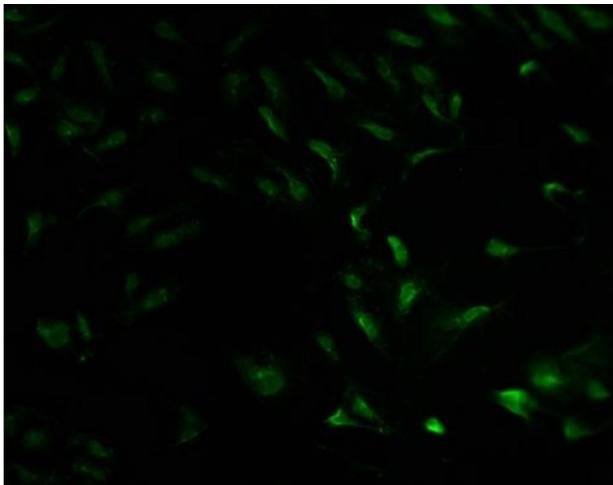
Storage: -20 °C, -80 °C

Storage Comment: Upon receipt, store at -20°C or -80°C. Avoid repeated freeze.



Immunohistochemistry

Image 1. IHC image of ABIN7142045 diluted at 1:200 and staining in paraffin-embedded human brain tissue performed on a Leica Bond™ system. After dewaxing and hydration, antigen retrieval was mediated by high pressure in a citrate buffer (pH 6.0). Section was blocked with 10 % normal goat serum 30 min at RT. Then primary antibody (1 % BSA) was incubated at 4 °C overnight. The primary is detected by a Goat anti-rabbit polymer IgG labeled by HRP and visualized using 0.05 % DAB.



Immunofluorescence

Image 2. Immunofluorescence staining of HeLa cells with ABIN7142045 at 1:100, counter-stained with DAPI. The cells were fixed in 4 % formaldehyde and blocked in 10 % normal Goat Serum. The cells were then incubated with the antibody overnight at 4 °C. The secondary antibody was Alexa Fluor 488-conjugated AffiniPure Goat Anti-Rabbit IgG(H+L).