

Datasheet for ABIN7142058

anti-Phospholipase C gamma 1 antibody (AA 1011-1290)[Go to Product page](#)**1** Image

Overview

Quantity:	100 µL
Target:	Phospholipase C gamma 1 (PLCG1)
Binding Specificity:	AA 1011-1290
Reactivity:	Human
Host:	Rabbit
Clonality:	Polyclonal
Conjugate:	This Phospholipase C gamma 1 antibody is un-conjugated
Application:	ELISA, Immunofluorescence (IF)

Product Details

Immunogen:	Recombinant Human 1-phosphatidylinositol 4,5-bisphosphate phosphodiesterase gamma-1 protein (1011-1290AA)
Isotype:	IgG
Cross-Reactivity:	Human
Purification:	>95%, Protein G purified

Target Details

Target:	Phospholipase C gamma 1 (PLCG1)
Alternative Name:	PLCG1 (PLCG1 Products)
Background:	Background: Mediates the production of the second messenger molecules diacylglycerol (DAG)

Target Details

and inositol 1,4,5-trisphosphate (IP3). Plays an important role in the regulation of intracellular signaling cascades. Becomes activated in response to ligand-mediated activation of receptor-type tyrosine kinases, such as PDGFRA, PDGFRB, FGFR1, FGFR2, FGFR3 and FGFR4. Plays a role in actin reorganization and cell migration.

Aliases: 1 phosphatidyl D myo inositol 4 5 bisphosphate antibody, 1 phosphatidylinositol 4 5 bisphosphate phosphodiesterase gamma 1 antibody, 1-phosphatidylinositol-4,5-bisphosphate phosphodiesterase gamma-1 antibody, Inositoltrisphosphohydrolase antibody, Monophosphatidylinositol phosphodiesterase antibody, NCKAP3 antibody, Phosphatidylinositol phospholipase C antibody, Phosphoinositidase C antibody, Phosphoinositide phospholipase C antibody, Phosphoinositide phospholipase C-gamma-1 antibody, Phospholipase C 148 antibody, Phospholipase C gamma 1 antibody, Phospholipase C-gamma-1 antibody, Phospholipase C-II antibody, PLC gamma 1 antibody, PLC II antibody, PLC-148 antibody, PLC-gamma-1 antibody, PLC-II antibody, PLC1 antibody, PLC148 antibody, Plcg1 antibody, PLCG1_HUMAN antibody, PLCgamma1 antibody

UniProt: [P19174](#)

Pathways: [RTK Signaling](#), [WNT Signaling](#), [TCR Signaling](#), [Fc-epsilon Receptor Signaling Pathway](#), [EGFR Signaling Pathway](#), [Neurotrophin Signaling Pathway](#), [Thyroid Hormone Synthesis](#), [Inositol Metabolic Process](#), [Myometrial Relaxation and Contraction](#), [Regulation of Muscle Cell Differentiation](#), [Regulation of G-Protein Coupled Receptor Protein Signaling](#), [Skeletal Muscle Fiber Development](#), [G-protein mediated Events](#), [Signaling Events mediated by VEGFR1 and VEGFR2](#), [Interaction of EGFR with phospholipase C-gamma](#), [VEGFR1 Specific Signals](#), [VEGF Signaling](#)

Application Details

Application Notes: Recommended dilution: IF:1:50-1:200,

Restrictions: For Research Use only

Handling

Format: Liquid

Buffer: Preservative: 0.03 % Proclin 300
Constituents: 50 % Glycerol, 0.01M PBS, pH 7.4

Preservative: ProClin

Precaution of Use: This product contains ProClin: a POISONOUS AND HAZARDOUS SUBSTANCE which should be

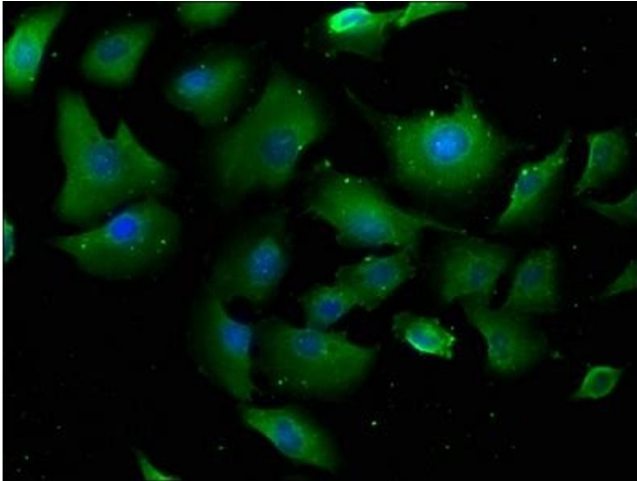
Handling

handled by trained staff only.

Storage: -20 °C,-80 °C

Storage Comment: Upon receipt, store at -20°C or -80°C. Avoid repeated freeze.

Images



Immunofluorescence

Image 1. Immunofluorescence staining of U251 cells with ABIN7142058 at 1:100, counter-stained with DAPI. The cells were fixed in 4 % formaldehyde, permeabilized using 0.2 % Triton X-100 and blocked in 10 % normal Goat Serum. The cells were then incubated with the antibody overnight at 4 °C. The secondary antibody was Alexa Fluor 488-conjugated AffiniPure Goat Anti-Rabbit IgG(H+L).