



[Go to Product page](#)

Datasheet for ABIN7142066
anti-GBE1 antibody (AA 1-300)

2 Images

Overview

Quantity:	100 µL
Target:	GBE1
Binding Specificity:	AA 1-300
Reactivity:	Human
Host:	Rabbit
Clonality:	Polyclonal
Conjugate:	This GBE1 antibody is un-conjugated
Application:	Western Blotting (WB), ELISA, Immunohistochemistry (IHC)

Product Details

Immunogen:	Recombinant Human 1,4-alpha-glucan-branching enzyme protein (1-300AA)
Isotype:	IgG
Cross-Reactivity:	Human
Purification:	Antigen Affinity Purified

Target Details

Target:	GBE1
Alternative Name:	GBE1 (GBE1 Products)
Background:	Background: Required for sufficient glycogen accumulation. The alpha 1-6 branches of glycogen play an important role in increasing the solubility of the molecule and, consequently, in

Target Details

reducing the osmotic pressure within cells.

Aliases: 1 antibody, 1,4 alpha glucan branching enzyme antibody, 1,4-alpha-glucan branching enzyme 1 antibody, 4-alpha-glucan-branching enzyme antibody, amylo (1,4 to 1,6) transglucosidase antibody, amylo (1,4 to 1,6) transglycosylase antibody, Andersen disease antibody, APBD antibody, Brancher enzyme antibody, GBE 1 antibody, GBE antibody, GBE1 antibody, gGlucan (1,4 alpha), branching enzyme 1 antibody, GLGB_HUMAN antibody, Glucan (1,4 alpha) branching enzyme antibody, Glycogen branching enzyme antibody, Glycogen storage disease type IV antibody, Glycogen-branching enzyme antibody, GSD4 antibody, OTTHUMP00000213788 antibody, OTTHUMP00000213833 antibody

UniProt: [Q04446](#)

Pathways: [Cellular Glucan Metabolic Process](#)

Application Details

Application Notes: Recommended dilution: WB:1:1000-1:5000, IHC:1:20-1:200,

Restrictions: For Research Use only

Handling

Format: Liquid

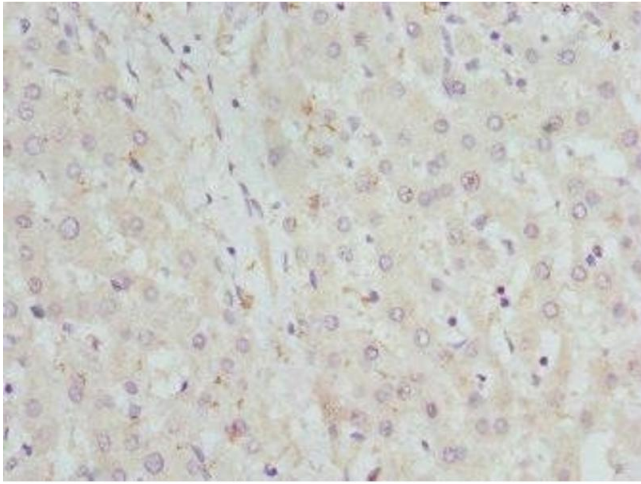
Buffer: PBS with 0.02 % sodium azide, 50 % glycerol, pH 7.3.

Preservative: Sodium azide

Precaution of Use: This product contains Sodium azide: a POISONOUS AND HAZARDOUS SUBSTANCE which should be handled by trained staff only.

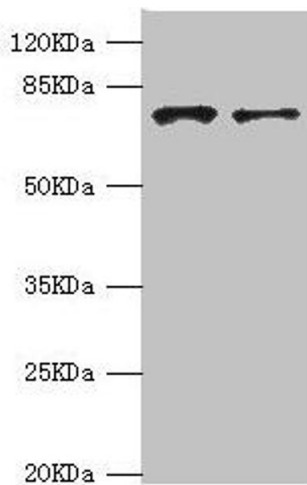
Storage: -20 °C,-80 °C

Storage Comment: Upon receipt, store at -20°C or -80°C. Avoid repeated freeze.



Immunohistochemistry

Image 1. Immunohistochemistry of paraffin-embedded human liver tissue using ABIN7142066 at dilution of 1:100



Western Blotting

Image 2. Western blot All lanes: GBE1 antibody at 3.13 μ g/mL Lane 1: HepG2 whole cell lysate Lane 2: Hela whole cell lysate Secondary Goat polyclonal to rabbit IgG at 1/10000 dilution Predicted band size: 80 kDa Observed band size: 80 kDa