

Datasheet for ABIN7142083  
**anti-YWHAB antibody (AA 1-246)**[Go to Product page](#)

## 4 Images

## Overview

Quantity:	100 µg
Target:	YWHAB
Binding Specificity:	AA 1-246
Reactivity:	Human
Host:	Rabbit
Clonality:	Polyclonal
Conjugate:	This YWHAB antibody is un-conjugated
Application:	Western Blotting (WB), ELISA, Immunohistochemistry (IHC), Immunofluorescence (IF)

## Product Details

Immunogen:	Recombinant Human 14-3-3 protein beta/alpha protein (1-246AA)
Isotype:	IgG
Cross-Reactivity:	Human, Mouse, Rat
Purification:	>95%, Protein G purified

## Target Details

Target:	YWHAB
Alternative Name:	YWHAB ( <a href="#">YWHAB Products</a> )
Background:	Background: Members of the 14-3-3 family of proteins are highly conserved proteins, localized in neurons, and are axonally transported to the nerve terminals. They are also present, at lower

## Target Details

levels, in various other eukaryotic tissues. 14-3-3 proteins appear to play important roles in a variety of signal transduction pathways, including those involved in cell cycle regulation and cell survival. Because 14-3-3 proteins bind to specific phosphoserine-containing sequences they are likely to have an important role in signaling pathways mediated by serine/threonine protein kinases. Evidence indicates 14-3-3 is required for Raf 1 kinase activity and phosphorylation among many other functions.

Aliases: 14 3 3 antibody, 14 3 3 protein beta antibody, 14 3 3 protein beta/alpha antibody, 14 3 3 protein zeta antibody, 14 3 3 zeta antibody, 14-3-3 protein beta/alpha antibody, 14-3-3 protein/cytosolic phospholipase A2 antibody, 1433B\_HUMAN antibody, GW128 antibody, HS1 antibody, KCIP 1 antibody, KCIP-1 antibody, MGC111427 antibody, MGC126532 antibody, MGC138156 antibody, N-terminally processed antibody, Protein 1054 antibody, Protein kinase C inhibitor protein 1 antibody, Tyrosine 3-monooxygenase/tryptophan 5-monooxygenase activation protein, delta polypeptide antibody, Tyrosine 3/tryptophan 5 -monooxygenase activation protein, zeta polypeptide antibody, YWHAB antibody, YWHAD antibody, YWHAZ antibody

UniProt: [P31946](#)

Pathways: [Fc-epsilon Receptor Signaling Pathway](#), [EGFR Signaling Pathway](#), [Neurotrophin Signaling Pathway](#), [Myometrial Relaxation and Contraction](#), [Maintenance of Protein Location](#)

## Application Details

Application Notes: Recommended dilution: WB:1:500-1:5000, IHC:1:500-1:1000, IF:1:200-1:500,

Restrictions: For Research Use only

## Handling

Format: Liquid

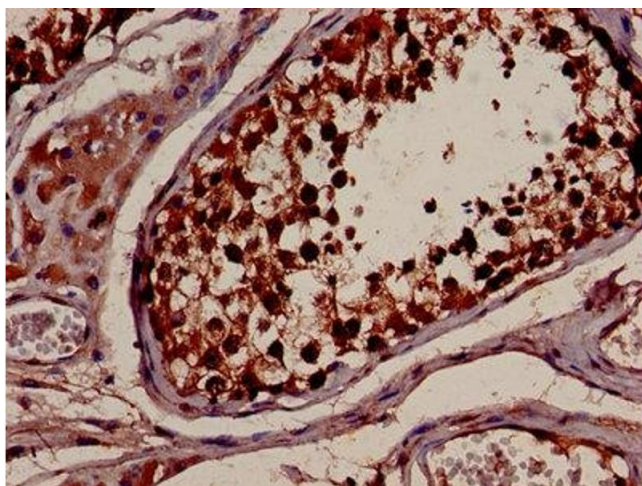
Buffer: Preservative: 0.03 % Proclin 300  
Constituents: 50 % Glycerol, 0.01M PBS, PH 7.4

Preservative: ProClin

Precaution of Use: This product contains ProClin: a POISONOUS AND HAZARDOUS SUBSTANCE which should be handled by trained staff only.

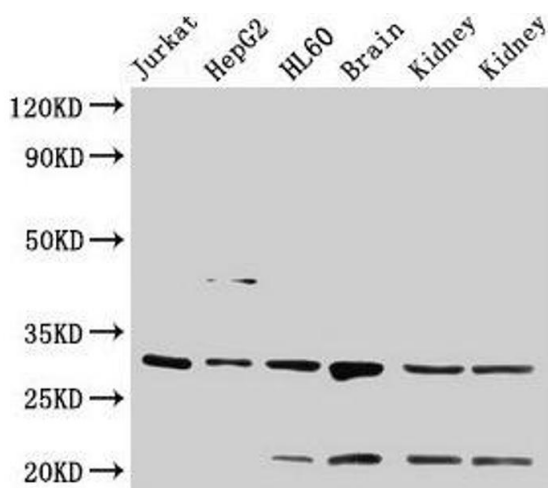
Storage: -20 °C,-80 °C

Storage Comment: Upon receipt, store at -20°C or -80°C. Avoid repeated freeze.



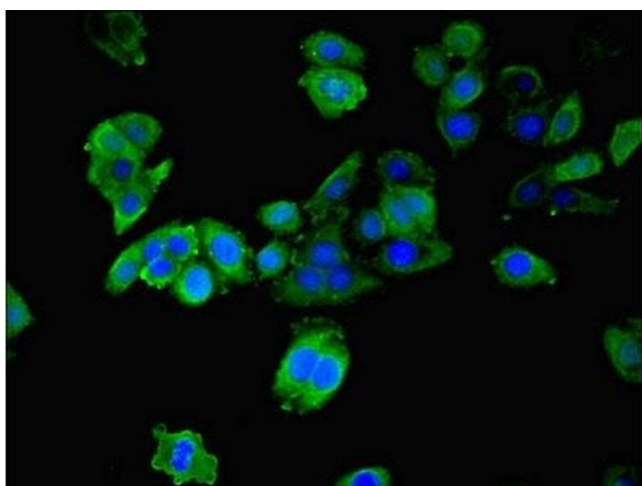
### Immunohistochemistry

**Image 1.** IHC image of ABIN7142083 diluted at 1:600 and staining in paraffin-embedded human testis tissue performed on a Leica Bond™ system. After dewaxing and hydration, antigen retrieval was mediated by high pressure in a citrate buffer (pH 6.0). Section was blocked with 10% normal goat serum 30min at RT. Then primary antibody (1% BSA) was incubated at 4°C overnight. The primary is detected by a biotinylated secondary antibody and visualized using an HRP conjugated SP system.



### Western Blotting

**Image 2.** Western Blot Positive WB detected in: Jurkat whole cell lysate, HepG2 whole cell lysate, HL60 whole cell lysate, Rat brain tissue, Rat kidney tissue, Mouse kidney tissue. All lanes: YWHAB antibody at 4 µg/mL. Secondary Goat polyclonal to rabbit IgG at 1/50000 dilution. Predicted band size: 29, 28 kDa. Observed band size: 29 kDa.



### Immunofluorescence

**Image 3.** Immunofluorescence staining of HepG2 cells with ABIN7142083 at 1:200, counter-stained with DAPI. The cells were fixed in 4% formaldehyde, permeabilized using 0.2% Triton X-100 and blocked in 10% normal Goat Serum. The cells were then incubated with the antibody overnight at 4°C. The secondary antibody was Alexa Fluor 488-conjugated AffiniPure Goat Anti-Rabbit IgG(H+L).

Please check the [product details page](#) for more images. Overall 4 images are available for ABIN7142083.