

Datasheet for ABIN7142087
anti-YWHAE antibody (AA 1-255)

6 Images

[Go to Product page](#)

Overview

Quantity:	100 µg
Target:	YWHAE
Binding Specificity:	AA 1-255
Reactivity:	Human
Host:	Rabbit
Clonality:	Polyclonal
Conjugate:	This YWHAE antibody is un-conjugated
Application:	Western Blotting (WB), ELISA, Immunohistochemistry (IHC), Immunofluorescence (IF)

Product Details

Immunogen:	Recombinant Human 14-3-3 protein epsilon protein (1-255AA)
Isotype:	IgG
Cross-Reactivity:	Human, Mouse
Purification:	>95%, Protein G purified

Target Details

Target:	YWHAE
Alternative Name:	YWHAE (YWHAE Products)
Background:	Background: Adapter protein implicated in the regulation of a large spectrum of both general and specialized signaling pathways. Binds to a large number of partners, usually by recognition

Target Details

of a phosphoserine or phosphothreonine motif. Binding generally results in the modulation of the activity of the binding partner.

Aliases: 14 3 3 E antibody, 14 3 3 epsilon antibody, 14 3 3E antibody, 14-3-3 protein epsilon antibody, 14-3-3E antibody, 1433E_HUMAN antibody, Epididymis luminal protein 2 antibody, FLJ45465 antibody, FLJ53559 antibody, HEL2 antibody, KCIP 1 antibody, KCIP1 antibody, MDCR antibody, MDS antibody, Mitochondrial import stimulation factor L subunit antibody, Protein kinase C inhibitor protein1 antibody, Tyrosine 3 monooxygenase/tryptophan 5 monooxygenase activation protein, epsilon antibody, Tyrosine 3 monooxygenase/tryptophan 5 monooxygenase activation protein, epsilon polypeptide antibody, Tyrosine 3/tryptophan 5 monooxygenase activation protein epsilon polypeptide antibody, YWHAE antibody

UniProt: [P62258](#)

Pathways: [Neurotrophin Signaling Pathway](#), [Myometrial Relaxation and Contraction](#), [M Phase](#)

Application Details

Application Notes: Recommended dilution: WB:1:500-1:5000, IHC:1:1000-1:2000, IF:1:200-1:500,

Restrictions: For Research Use only

Handling

Format: Liquid

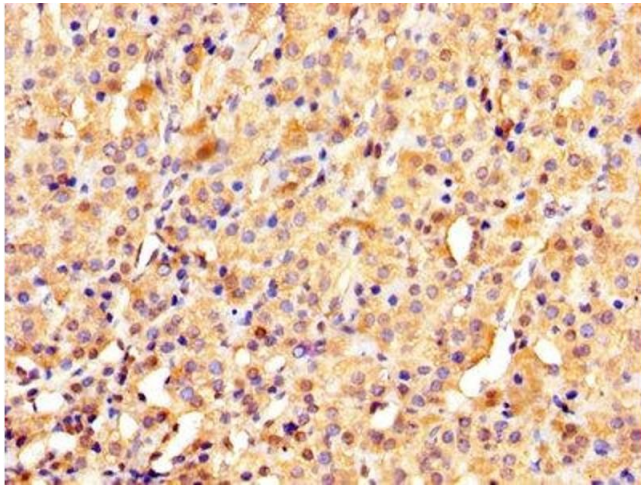
Buffer: Preservative: 0.03 % Proclin 300
Constituents: 50 % Glycerol, 0.01M PBS, PH 7.4

Preservative: ProClin

Precaution of Use: This product contains ProClin: a POISONOUS AND HAZARDOUS SUBSTANCE which should be handled by trained staff only.

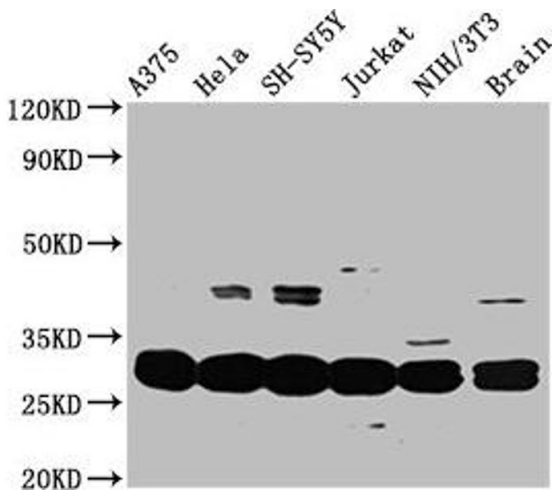
Storage: -20 °C,-80 °C

Storage Comment: Upon receipt, store at -20°C or -80°C. Avoid repeated freeze.



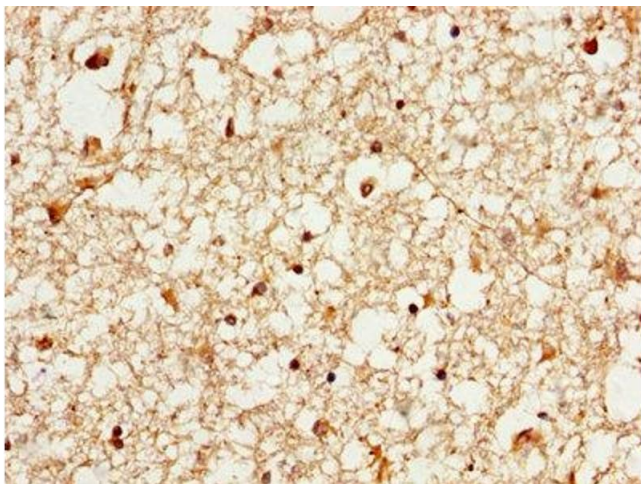
Immunohistochemistry

Image 1. IHC image of ABIN7142087 diluted at 1:1000 and staining in paraffin-embedded human adrenal gland tissue performed on a Leica Bond™ system. After dewaxing and hydration, antigen retrieval was mediated by high pressure in a citrate buffer (pH 6.0). Section was blocked with 10% normal goat serum 30min at RT. Then primary antibody (1% BSA) was incubated at 4°C overnight. The primary is detected by a biotinylated secondary antibody and visualized using an HRP conjugated SP system.



Western Blotting

Image 2. Western Blot Positive WB detected in: A375 whole cell lysate, HeLa whole cell lysate, SH-SY5Y whole cell lysate, Jurkat whole cell lysate, NIH/3T3 whole cell lysate, Mouse brain tissue. All lanes: YWHAE antibody at 3.3 µg/mL. Secondary Goat polyclonal to rabbit IgG at 1/50000 dilution. Predicted band size: 30, 27 kDa. Observed band size: 30 kDa.



Immunohistochemistry

Image 3. IHC image of ABIN7142087 diluted at 1:1000 and staining in paraffin-embedded human brain tissue performed on a Leica Bond™ system. After dewaxing and hydration, antigen retrieval was mediated by high pressure in a citrate buffer (pH 6.0). Section was blocked with 10% normal goat serum 30min at RT. Then primary antibody (1% BSA) was incubated at 4°C overnight. The primary is detected by a biotinylated secondary antibody and visualized using an HRP conjugated SP system.

Please check the [product details page](#) for more images. Overall 6 images are available for ABIN7142087.