

Datasheet for ABIN7142099

anti-14-3-3 sigma/SFN antibody (AA 1-248)**3** Images[Go to Product page](#)

Overview

Quantity:	100 µg
Target:	14-3-3 sigma/SFN (SFN)
Binding Specificity:	AA 1-248
Reactivity:	Human
Host:	Rabbit
Clonality:	Polyclonal
Conjugate:	This 14-3-3 sigma/SFN antibody is un-conjugated
Application:	Western Blotting (WB), Immunohistochemistry (IHC), ELISA, Immunofluorescence (IF)

Product Details

Immunogen:	Recombinant Human 14-3-3 protein sigma protein (1-248AA)
Isotype:	IgG
Cross-Reactivity:	Human, Mouse, Rat
Purification:	>95%, Protein G purified

Target Details

Target:	14-3-3 sigma/SFN (SFN)
Alternative Name:	SFN (SFN Products)
Background:	Background: Adapter protein implicated in the regulation of a large spectrum of both general and specialized signaling pathways. Binds to a large number of partners, usually by recognition

Target Details

of a phosphoserine or phosphothreonine motif. Binding generally results in the modulation of the activity of the binding partner. When bound to KRT17, regulates protein synthesis and epithelial cell growth by stimulating Akt/mTOR pathway. May also regulate MDM2 autoubiquitination and degradation and thereby activate p53/TP53.

Aliases: 14 3 3 protein sigma antibody, 14-3-3 protein sigma antibody, 1433S_HUMAN antibody, Epithelial cell marker protein 1 antibody, Er antibody, HME 1 antibody, HME1 antibody, MGC143283 antibody, Mkrn3 antibody, Mme1 antibody, OTTHUMP00000004242 antibody, RP23 137L22.11 antibody, SFN antibody, SFN protein antibody, Stratifin antibody, YWHAS antibody

UniProt: [P31947](#)

Pathways: [p53 Signaling](#), [Myometrial Relaxation and Contraction](#)

Application Details

Application Notes: Recommended dilution: WB:1:500-1:5000, IHC:1:500-1:1000, IF:1:200-1:500,

Restrictions: For Research Use only

Handling

Format: Liquid

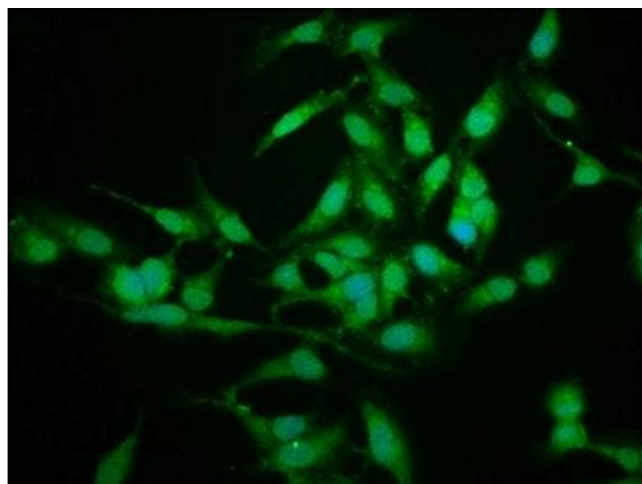
Buffer: Preservative: 0.03 % Proclin 300
Constituents: 50 % Glycerol, 0.01M PBS, pH 7.4

Preservative: ProClin

Precaution of Use: This product contains ProClin: a POISONOUS AND HAZARDOUS SUBSTANCE which should be handled by trained staff only.

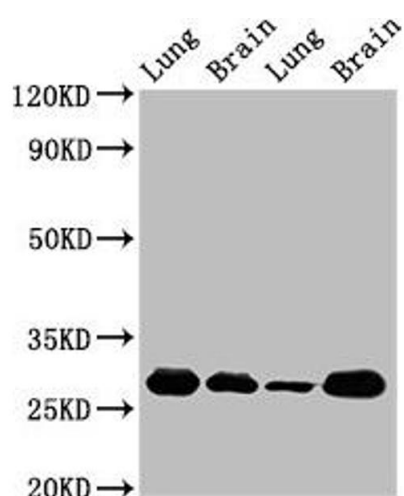
Storage: -20 °C,-80 °C

Storage Comment: Upon receipt, store at -20°C or -80°C. Avoid repeated freeze.



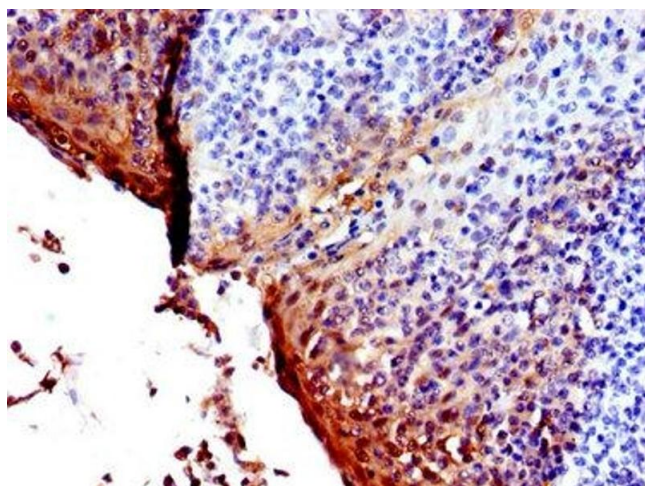
Immunofluorescence

Image 1. Immunofluorescence staining of HeLa cells with ABIN7142099 at 1:225, counter-stained with DAPI. The cells were fixed in 4 % formaldehyde, permeabilized using 0.2 % Triton X-100 and blocked in 10 % normal Goat Serum. The cells were then incubated with the antibody overnight at 4 °C. The secondary antibody was Alexa Fluor 488-conjugated AffiniPure Goat Anti-Rabbit IgG(H+L).



Western Blotting

Image 2. Western Blot Positive WB detected in: Rat lung tissue, Rat brain tissue, Mouse lung tissue, Mouse brain tissue. All lanes: SFN antibody at 5 µg/mL. Secondary Goat polyclonal to rabbit IgG at 1/50000 dilution. Predicted band size: 28, 25 kDa. Observed band size: 28 kDa.



Immunohistochemistry

Image 3. IHC image of ABIN7142099 diluted at 1:600 and staining in paraffin-embedded human tonsil tissue performed on a Leica Bond™ system. After dewaxing and hydration, antigen retrieval was mediated by high pressure in a citrate buffer (pH 6.0). Section was blocked with 10 % normal goat serum 30 min at RT. Then primary antibody (1 % BSA) was incubated at 4 °C overnight. The primary is detected by a biotinylated secondary antibody and visualized using an HRP conjugated SP system.