

Datasheet for ABIN7142103
anti-14-3-3 theta antibody (AA 1-245)

5 Images

[Go to Product page](#)

Overview

Quantity:	100 µL
Target:	14-3-3 theta (YWHAQ)
Binding Specificity:	AA 1-245
Reactivity:	Human
Host:	Rabbit
Clonality:	Polyclonal
Application:	Western Blotting (WB), ELISA, Immunohistochemistry (IHC), Immunofluorescence (IF)

Product Details

Immunogen:	Recombinant Human 14-3-3 protein theta protein (1-245AA)
Isotype:	IgG
Cross-Reactivity:	Human, Mouse
Purification:	Antigen Affinity Purified

Target Details

Target:	14-3-3 theta (YWHAQ)
Alternative Name:	YWHAQ (YWHAQ Products)
Background:	Background: Adapter protein implicated in the regulation of a large spectrum of both general and specialized signaling pathways. Binds to a large number of partners, usually by recognition of a phosphoserine or phosphothreonine motif. Binding generally results in the modulation of the activity of the binding partner. Negatively regulates the kinase activity of PDPK1.

Target Details

Aliases: 14-3-3 protein T cell antibody, 14-3-3 protein T-cell antibody, 14-3-3 protein tau antibody, 14-3-3 protein theta antibody, 1433T_HUMAN antibody, IC5 antibody, Protein HS1 antibody, Protein tau antibody, YWHAQ tyrosine 3 monooxygenase/tryptophan 5-monooxygenase activation protein, theta polypeptide antibody, Ywhaq antibody

UniProt: [P27348](#)

Pathways: [Apoptosis](#), [Myometrial Relaxation and Contraction](#)

Application Details

Application Notes: Recommended dilution: WB:1:200-1:1000, IHC:1:20-1:500, IF:1:50-1:200,

Restrictions: For Research Use only

Handling

Format: Liquid

Buffer: PBS with 0.02 % sodium azide, 50 % glycerol, pH 7.3.

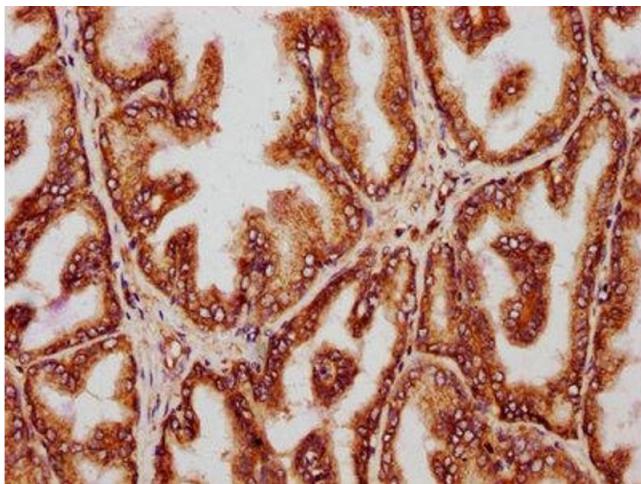
Preservative: Sodium azide

Precaution of Use: This product contains Sodium azide: a POISONOUS AND HAZARDOUS SUBSTANCE which should be handled by trained staff only.

Storage: -20 °C,-80 °C

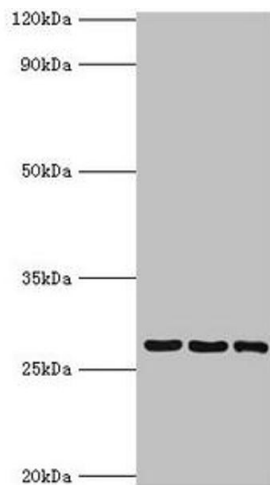
Storage Comment: Upon receipt, store at -20°C or -80°C. Avoid repeated freeze.

Images



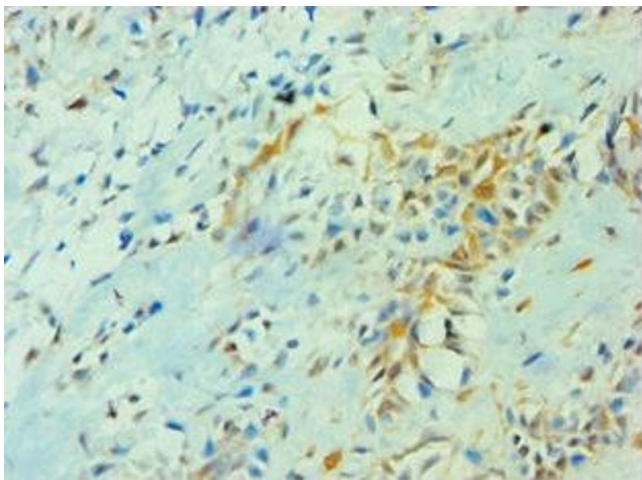
Immunohistochemistry

Image 1. IHC image of ABIN7142103 diluted at 1:221 and staining in paraffin-embedded human prostate tissue performed on a Leica Bond™ system. After dewaxing and hydration, antigen retrieval was mediated by high pressure in a citrate buffer (pH 6.0). Section was blocked with 10 % normal goat serum 30 min at RT. Then primary antibody (1 % BSA) was incubated at 4 °C overnight. The primary is detected by a biotinylated secondary antibody and visualized using an HRP conjugated SP system.



Western Blotting

Image 2. Western blot All lanes: 14-3-3 protein theta antibody at 4 µg/mL Lane 1: A549 whole cell lysate Lane 2: Mouse lung tissue Lane 3: HepG2 whole cell lysate Secondary Goat polyclonal to rabbit IgG at 1/10000 dilution Predicted band size: 28 kDa Observed band size: 28 kDa



Immunohistochemistry

Image 3. Immunohistochemistry of paraffin-embedded human breast cancer using ABIN7142103 at dilution of 1:100

Please check the [product details page](#) for more images. Overall 5 images are available for ABIN7142103.