

Datasheet for ABIN7142105
anti-14-3-3 zeta antibody (AA 133-212)[Go to Product page](#)

5 Images

Overview

Quantity:	100 µg
Target:	14-3-3 zeta (YWHAZ)
Binding Specificity:	AA 133-212
Reactivity:	Human
Host:	Rabbit
Clonality:	Polyclonal
Conjugate:	This 14-3-3 zeta antibody is un-conjugated
Application:	Western Blotting (WB), Immunohistochemistry (IHC), ELISA, Immunofluorescence (IF)

Product Details

Immunogen:	Recombinant Human 14-3-3 protein zeta/delta protein (133-212AA)
Isotype:	IgG
Cross-Reactivity:	Human, Mouse
Purification:	>95%, Protein G purified

Target Details

Target:	14-3-3 zeta (YWHAZ)
Alternative Name:	YWHAZ (YWHAZ Products)
Background:	Background: Adapter protein implicated in the regulation of a large spectrum of both general and specialized signaling pathways. Binds to a large number of partners, usually by recognition

Target Details

of a phosphoserine or phosphothreonine motif. Binding generally results in the modulation of the activity of the binding partner.

Aliases: 14 3 3 delta antibody, 14 3 3 protein zeta/delta antibody, 14 3 3 protein/cytosolic phospholipase A2 antibody, 14 3 3 zeta antibody, 14-3-3 protein zeta/delta antibody, 1433Z_HUMAN antibody, Epididymis luminal protein 4 antibody, Epididymis secretory protein Li 3 antibody, HEL S 3 antibody, HEL4 antibody, KCIP-1 antibody, KCIP1 antibody, MGC111427 antibody, MGC126532 antibody, MGC138156 antibody, Phospholipase A2 antibody, Protein kinase C inhibitor protein 1 antibody, Tyrosine 3 monooxygenase/tryptophan 5 monooxygenase activation protein, delta polypeptide antibody, Tyrosine 3 monooxygenase/tryptophan 5 monooxygenase activation protein, zeta antibody, Tyrosine 3 monooxygenase/tryptophan 5 monooxygenase activation protein, zeta polypeptide antibody, Tyrosine 3/tryptophan 5 monooxygenase activation protein, zeta polypeptide antibody, YWHAD antibody, YWHAZ antibody

UniProt: [P63104](#)

Pathways: [Apoptosis](#), [Hormone Transport](#), [Myometrial Relaxation and Contraction](#), [Regulation of Leukocyte Mediated Immunity](#), [Positive Regulation of Immune Effector Process](#), [Synaptic Membrane](#), [Production of Molecular Mediator of Immune Response](#), [Maintenance of Protein Location](#)

Application Details

Application Notes: Recommended dilution: WB:1:500-1:5000, IHC:1:1000-1:2000, IF:1:50-1:200,

Restrictions: For Research Use only

Handling

Format: Liquid

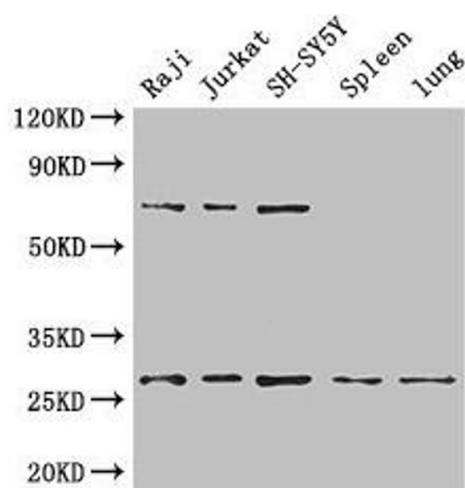
Buffer: Preservative: 0.03 % Proclin 300
Constituents: 50 % Glycerol, 0.01M PBS, PH 7.4

Preservative: ProClin

Precaution of Use: This product contains ProClin: a POISONOUS AND HAZARDOUS SUBSTANCE which should be handled by trained staff only.

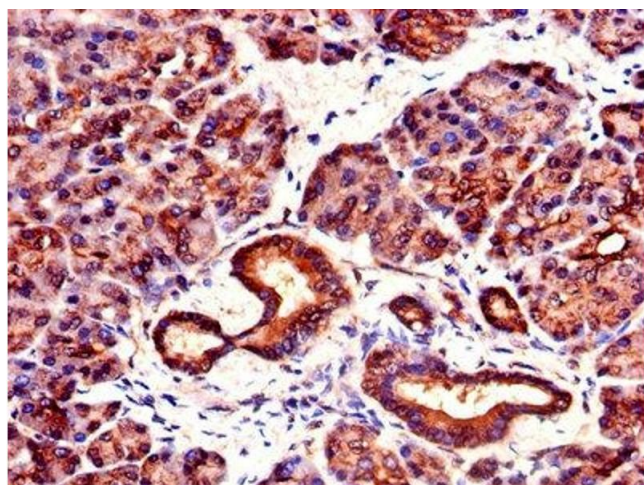
Storage: -20 °C,-80 °C

Storage Comment: Upon receipt, store at -20°C or -80°C. Avoid repeated freeze.



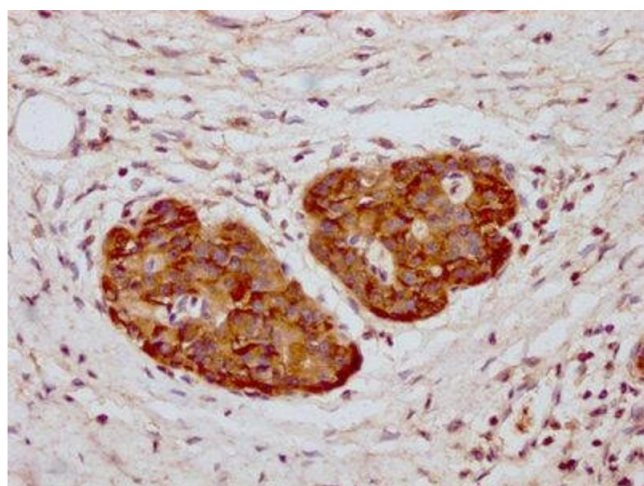
Western Blotting

Image 1. Western Blot Positive WB detected in: Raji whole cell lysate, Jurkat whole cell lysate, SH-SY5Y whole cell lysate, Mouse spleen tissue, Mouse lung tissue All lanes: YWHAZ antibody at 3.4 µg/mL Secondary Goat polyclonal to rabbit IgG at 1/50000 dilution Predicted band size: 28, 20 kDa Observed band size: 28, 70 kDa



Immunohistochemistry

Image 2. IHC image of ABIN7142105 diluted at 1:1000 and staining in paraffin-embedded human pancreatic tissue performed on a Leica Bond™ system. After dewaxing and hydration, antigen retrieval was mediated by high pressure in a citrate buffer (pH 6.0). Section was blocked with 10% normal goat serum 30min at RT. Then primary antibody (1% BSA) was incubated at 4°C overnight. The primary is detected by a biotinylated secondary antibody and visualized using an HRP conjugated SP system.



Immunohistochemistry

Image 3. IHC image of ABIN7142105 diluted at 1:1000 and staining in paraffin-embedded human pancreatic cancer performed on a Leica Bond™ system. After dewaxing and hydration, antigen retrieval was mediated by high pressure in a citrate buffer (pH 6.0). Section was blocked with 10% normal goat serum 30min at RT. Then primary antibody (1% BSA) was incubated at 4°C overnight. The primary is detected by a biotinylated secondary antibody and visualized using an HRP conjugated SP system.

Please check the [product details page](#) for more images. Overall 5 images are available for ABIN7142105.