

Datasheet for ABIN7142122
anti-DPH1 antibody (AA 192-318)[Go to Product page](#)

1 Image

Overview

| | |
|----------------------|-------------------------------------|
| Quantity: | 100 µg |
| Target: | DPH1 |
| Binding Specificity: | AA 192-318 |
| Reactivity: | Human |
| Host: | Rabbit |
| Clonality: | Polyclonal |
| Conjugate: | This DPH1 antibody is un-conjugated |
| Application: | ELISA, Immunohistochemistry (IHC) |

Product Details

| | |
|-------------------|---|
| Immunogen: | Recombinant Human 2-(3-amino-3-carboxypropyl)histidine synthase subunit 1 protein (192-318AA) |
| Isotype: | IgG |
| Cross-Reactivity: | Human |
| Purification: | >95%, Protein G purified |

Target Details

| | |
|-------------------|---|
| Target: | DPH1 |
| Alternative Name: | DPH1 (DPH1 Products) |
| Background: | Background: Required for the first step in the synthesis of diphthamide, a post-translational |

Target Details

modification of histidine which occurs in translation elongation factor 2 (EEF2). When overexpressed, suppresses colony formation ability and growth rate of ovarian cancer cells. Acts also as a tumor suppressor in lung and breast cancers (By similarity). Plays a role in embryonic growth, organogenesis and postnatal survival.

Aliases: Candidate tumor suppressor in ovarian cancer 1 antibody, Diphthamide biosynthesis protein 1 antibody, Diphthamide biosynthesis protein 2 homolog like 1 antibody, Diphthamide biosynthesis protein 2 homolog-like 1 antibody, Diphthamide biosynthesis protein 2 like antibody, Diphthamide biosynthesis protein 2-like antibody, Diptheria toxin resistance protein required for diphthamide biosynthesis (Saccharomyces) like 1 antibody, Diptheria toxin resistance protein required for diphthamide biosynthesis like 1 antibody, DPH like 1 (S. cerevisiae) antibody, DPH like 1 antibody, DPH-like 1 antibody, DPH1 antibody, DPH1 homolog (S. cerevisiae) antibody, DPH1 homolog antibody, DPH1_HUMAN antibody, DPH2 like 1 antibody, DPH2-like 1 antibody, DPH2L antibody, DPH2L1 antibody, FLJ33211 antibody, HsDph1 antibody, Ovarian cancer associated gene 1 antibody, Ovarian cancer associated gene 1 protein antibody, Ovarian cancer-associated gene 1 protein antibody, Ovarian tumor suppressor candidate 1 antibody

UniProt: [Q9BZG8](#)

Application Details

Application Notes: Recommended dilution: IHC:1:20-1:200,

Restrictions: For Research Use only

Handling

Format: Liquid

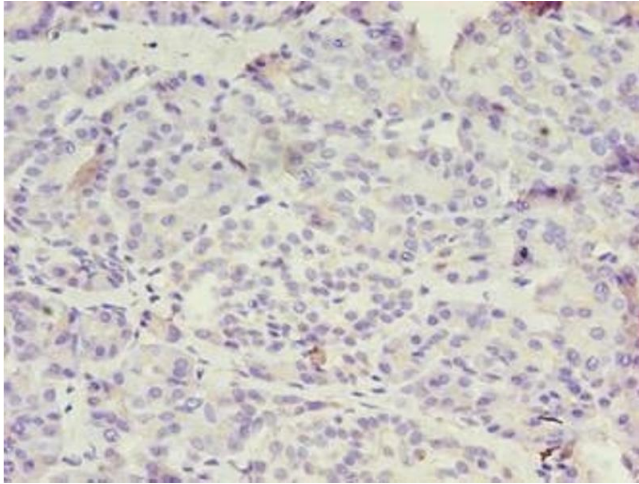
Buffer: Preservative: 0.03 % Proclin 300
Constituents: 50 % Glycerol, 0.01M PBS, PH 7.4

Preservative: ProClin

Precaution of Use: This product contains ProClin: a POISONOUS AND HAZARDOUS SUBSTANCE which should be handled by trained staff only.

Storage: -20 °C,-80 °C

Storage Comment: Upon receipt, store at -20°C or -80°C. Avoid repeated freeze.



Immunohistochemistry

Image 1. Immunohistochemistry of paraffin-embedded human ovarian cancer using ABIN7142122 at dilution of 1:100