



[Go to Product page](#)

Datasheet for ABIN7142162

anti-alpha KGDHC antibody (AA 41-423)

1 Image

Overview

Quantity:	100 µg
Target:	alpha KGDHC (alphaKGDHC)
Binding Specificity:	AA 41-423
Reactivity:	Human
Host:	Rabbit
Clonality:	Polyclonal
Conjugate:	This alpha KGDHC antibody is un-conjugated
Application:	Immunohistochemistry (IHC), ELISA

Product Details

Immunogen:	Recombinant Human 2-oxoglutarate dehydrogenase, mitochondrial protein (41-423AA)
Isotype:	IgG
Cross-Reactivity:	Human
Purification:	>95%, Protein G purified

Target Details

Target:	alpha KGDHC (alphaKGDHC)
Alternative Name:	OGDH (alphaKGDHC Products)
Background:	Background: The 2-oxoglutarate dehydrogenase complex catalyzes the overall conversion of 2-oxoglutarate to succinyl-CoA and CO ₂ . It contains multiple copies of three enzymatic

Target Details

components: 2-oxoglutarate dehydrogenase (E1), dihydrolipoamide succinyltransferase (E2) and lipoamide dehydrogenase (E3).

Aliases: 2 oxoglutarate dehydrogenase antibody, 2 oxoglutarate dehydrogenase complex component E1 antibody, 2 oxoglutarate dehydrogenase mitochondrial antibody, 2-oxoglutarate dehydrogenase antibody, 2-oxoglutarate dehydrogenase complex component E1 antibody, AKGDH antibody, Alpha ketoglutarate dehydrogenase antibody, Alpha-ketoglutarate dehydrogenase antibody, E1k antibody, mitochondrial antibody, ODO1_HUMAN antibody, OGDC antibody, OGDC E1 antibody, OGDC-E1 antibody, OGDH antibody, Oxoglutarate (alpha ketoglutarate) dehydrogenase (lipoamide) antibody, Oxoglutarate decarboxylase antibody, Oxoglutarate dehydrogenase (lipoamide) antibody, Oxoglutarate dehydrogenase (succinyl transferring) antibody

UniProt: [Q02218](#)

Application Details

Application Notes: Recommended dilution: IHC:1:20-1:200,

Restrictions: For Research Use only

Handling

Format: Liquid

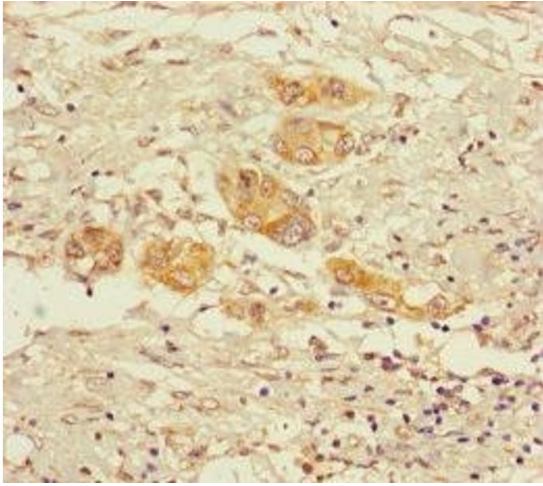
Buffer: Preservative: 0.03 % Proclin 300
Constituents: 50 % Glycerol, 0.01M PBS, PH 7.4

Preservative: ProClin

Precaution of Use: This product contains ProClin: a POISONOUS AND HAZARDOUS SUBSTANCE which should be handled by trained staff only.

Storage: -20 °C,-80 °C

Storage Comment: Upon receipt, store at -20°C or -80°C. Avoid repeated freeze.



Immunohistochemistry

Image 1. Immunohistochemistry of paraffin-embedded human pancreatic cancer using ABIN7142162 at dilution of 1:100