

Datasheet for ABIN7142208

anti-PSMD2 antibody (Regulatory Subunit 2)**3** Images[Go to Product page](#)

Overview

Quantity:	100 µg
Target:	PSMD2
Binding Specificity:	AA 401-700, Regulatory Subunit 2
Reactivity:	Human
Host:	Rabbit
Clonality:	Polyclonal
Conjugate:	This PSMD2 antibody is un-conjugated
Application:	Western Blotting (WB), ELISA, Immunofluorescence (IF), Immunohistochemistry (IHC)

Product Details

Immunogen:	Recombinant Human 26S proteasome non-ATPase regulatory subunit 2 protein (401-700AA)
Isotype:	IgG
Cross-Reactivity:	Human
Purification:	>95%, Protein G purified

Target Details

Target:	PSMD2
Alternative Name:	PSMD2 (PSMD2 Products)
Background:	Background: Acts as a regulatory subunit of the 26 proteasome which is involved in the ATP-dependent degradation of ubiquitinated proteins.

Target Details

Aliases: 26S proteasome non-ATPase regulatory subunit 2 antibody, 26S proteasome regulatory subunit RPN1 antibody, 26S proteasome regulatory subunit S2 antibody, 26S proteasome subunit p97 antibody, 55.11 protein antibody, MGC14274 antibody, P97 antibody, Proteasome (prosome macropain) 26S subunit non ATPase 2 antibody, Proteasome 26S subunit, non-ATPase, 2 antibody, Proteasome 26S, subunit 2 antibody, Protein 55.11 antibody, Psmd2 antibody, PSMD2_HUMAN antibody, Rpn1 antibody, S2 antibody, TNFR associated protein 2 antibody, TRAP2 antibody, Tumor necrosis factor receptor associated protein 2 antibody, Tumor necrosis factor type 1 receptor-associated protein 2 antibody

UniProt: [Q13200](#)

Pathways: [Mitotic G1-G1/S Phases](#), [DNA Replication](#), [Synthesis of DNA](#), [Ubiquitin Proteasome Pathway](#)

Application Details

Application Notes: Recommended dilution: WB:1:500-1:5000, IHC:1:1000-1:2000, IF:1:200-1:500,

Restrictions: For Research Use only

Handling

Format: Liquid

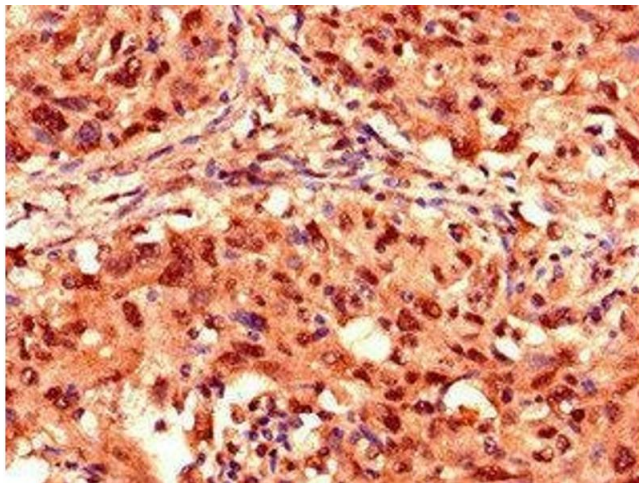
Buffer: Preservative: 0.03 % Proclin 300
Constituents: 50 % Glycerol, 0.01M PBS, PH 7.4

Preservative: ProClin

Precaution of Use: This product contains ProClin: a POISONOUS AND HAZARDOUS SUBSTANCE which should be handled by trained staff only.

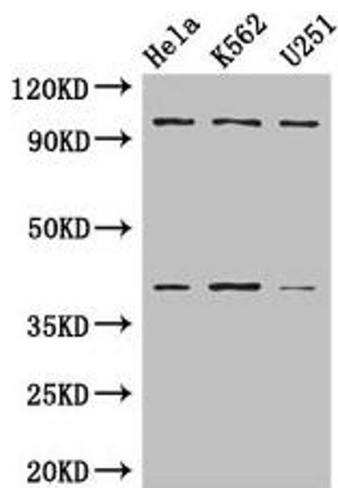
Storage: -20 °C, -80 °C

Storage Comment: Upon receipt, store at -20°C or -80°C. Avoid repeated freeze.



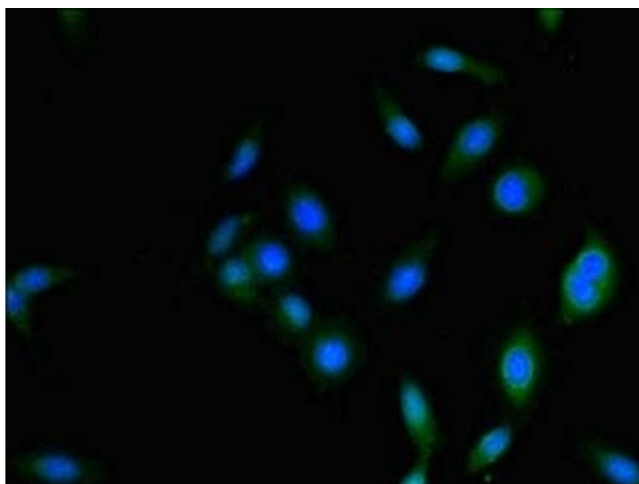
Immunohistochemistry

Image 1. IHC image of ABIN7142208 diluted at 1:1000 and staining in paraffin-embedded human lung cancer performed on a Leica Bond™ system. After dewaxing and hydration, antigen retrieval was mediated by high pressure in a citrate buffer (pH 6.0). Section was blocked with 10% normal goat serum 30min at RT. Then primary antibody (1% BSA) was incubated at 4°C overnight. The primary is detected by a biotinylated secondary antibody and visualized using an HRP conjugated SP system.



Western Blotting

Image 2. Western Blot Positive WB detected in: HeLa whole cell lysate, K562 whole cell lysate, U251 whole cell lysate All lanes: PSMD2 antibody at 3 µg/mL Secondary Goat polyclonal to rabbit IgG at 1/50000 dilution Predicted band size: 101, 83, 86 kDa Observed band size: 101, 40 kDa



Immunofluorescence

Image 3. Immunofluorescence staining of HeLa cells with ABIN7142208 at 1:333, counter-stained with DAPI. The cells were fixed in 4% formaldehyde, permeabilized using 0.2% Triton X-100 and blocked in 10% normal Goat Serum. The cells were then incubated with the antibody overnight at 4°C. The secondary antibody was Alexa Fluor 488-conjugated AffiniPure Goat Anti-Rabbit IgG(H+L).