

Datasheet for ABIN7142212

anti-PSMD4/ASF antibody (Regulatory Subunit 4)**3** Images[Go to Product page](#)

Overview

Quantity:	100 µL
Target:	PSMD4/ASF (Psm4)
Binding Specificity:	AA 161-377, Regulatory Subunit 4
Reactivity:	Human
Host:	Rabbit
Clonality:	Polyclonal
Conjugate:	This PSMD4/ASF antibody is un-conjugated
Application:	Western Blotting (WB), ELISA, Immunohistochemistry (IHC)

Product Details

Immunogen:	Recombinant Human 26S proteasome non-ATPase regulatory subunit 4 protein (161-377AA)
Isotype:	IgG
Cross-Reactivity:	Human
Purification:	Antigen Affinity Purified

Target Details

Target:	PSMD4/ASF (Psm4)
Alternative Name:	PSMD4 (Psm4 Products)
Background:	Background: Component of the 26S proteasome, a multiprotein complex involved in the ATP-dependent degradation of ubiquitinated proteins. This complex plays a key role in the

Target Details

maintenance of protein homeostasis by removing misfolded or damaged proteins, which could impair cellular functions, and by removing proteins whose functions are no longer required. Therefore, the proteasome participates in numerous cellular processes, including cell cycle progression, apoptosis, or DNA damage repair. PSMD4 acts as an ubiquitin receptor subunit through ubiquitin-interacting motifs and selects ubiquitin-conjugates for destruction. Displays a preferred selectivity for longer polyubiquitin chains.

Aliases: 26S protease subunit S5a antibody, 26S proteasome non ATPase regulatory subunit 4 antibody, 26S proteasome non-ATPase regulatory subunit 4 antibody, 26S proteasome regulatory subunit rpn10 antibody, 26S proteasome regulatory subunit S5A antibody, AF 1 antibody, AF antibody, AF1 antibody, Angiocidin antibody, Antisecretory factor 1 antibody, ASF antibody, DS5a antibody, MCB 1 antibody, MCB1 antibody, Multiubiquitin chain binding protein antibody, Multiubiquitin chain-binding protein antibody, OTTHUMP00000059963 antibody, Prosome macropain antibody, Proteasome (prosome macropain) 26S subunit non ATPase 4 antibody, Proteasome 19S S5A antibody, Proteasome 26S non ATPase subunit 4 antibody, Proteasome 26S subunit non ATPase 4 antibody, PSMD 4 antibody, Psmd4 antibody, PSMD4_HUMAN antibody, pUB R5 antibody, pUBR5 antibody, Rpn 10 antibody, Rpn10 antibody, RPN10 homolog antibody, S5A antibody, S5a/antisecretory factor protein antibody

UniProt: [P55036](#)

Pathways: [Mitotic G1-G1/S Phases](#), [DNA Replication](#), [Synthesis of DNA](#), [Ubiquitin Proteasome Pathway](#)

Application Details

Application Notes: Recommended dilution: WB:1:1000-1:5000, IHC:1:20-1:200,

Restrictions: For Research Use only

Handling

Format: Liquid

Buffer: Preservative: 0.03 % Proclin 300
Constituents: 50 % Glycerol, 0.01M PBS, pH 7.4

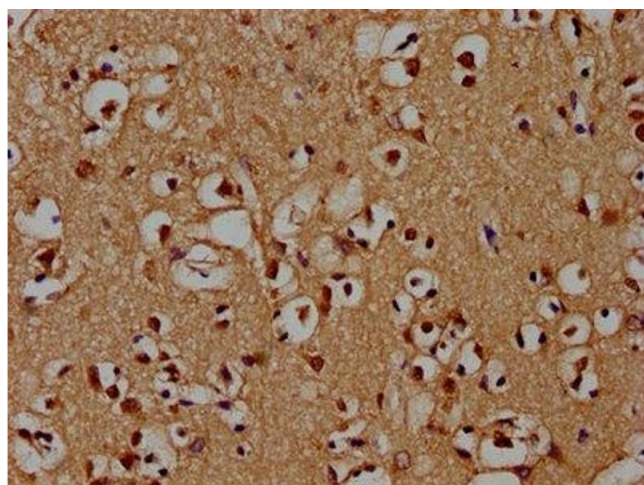
Preservative: ProClin

Precaution of Use: This product contains ProClin: a POISONOUS AND HAZARDOUS SUBSTANCE which should be handled by trained staff only.

Storage: -20 °C,-80 °C

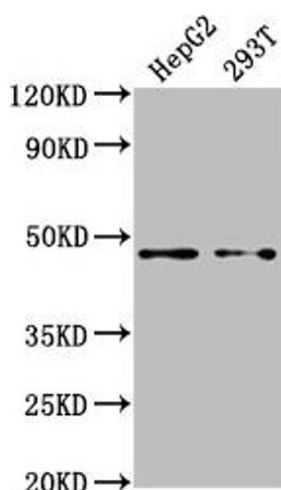
Storage Comment: Upon receipt, store at -20°C or -80°C. Avoid repeated freeze.

Images



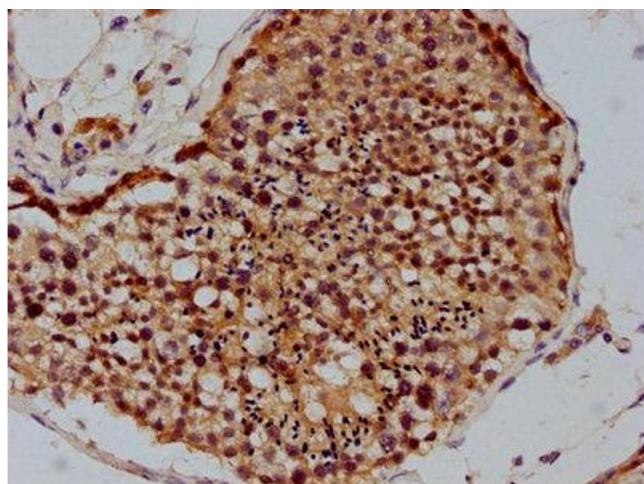
Immunohistochemistry

Image 1. IHC image of ABIN7142212 diluted at 1:100 and staining in paraffin-embedded human brain tissue performed on a Leica Bond™ system. After dewaxing and hydration, antigen retrieval was mediated by high pressure in a citrate buffer (pH 6.0). Section was blocked with 10 % normal goat serum 30 min at RT. Then primary antibody (1 % BSA) was incubated at 4 °C overnight. The primary is detected by a biotinylated secondary antibody and visualized using an HRP conjugated SP system.



Western Blotting

Image 2. Western Blot Positive WB detected in: HepG2 whole cell lysate, 293T whole cell lysate All lanes: PSMD4 antibody at 1:2000 Secondary Goat polyclonal to rabbit IgG at 1/50000 dilution Predicted band size: 41, 29 kDa Observed band size: 41 kDa



Immunohistochemistry

Image 3. IHC image of ABIN7142212 diluted at 1:100 and staining in paraffin-embedded human testis tissue performed on a Leica Bond™ system. After dewaxing and hydration, antigen retrieval was mediated by high pressure in a citrate buffer (pH 6.0). Section was blocked with 10 % normal goat serum 30 min at RT. Then primary antibody (1 % BSA) was incubated at 4 °C overnight. The primary is detected by a biotinylated secondary antibody and visualized using an HRP conjugated SP system.