

Datasheet for ABIN7142217

anti-PSMD7 antibody (Regulatory Subunit 7)**3** Images[Go to Product page](#)

Overview

Quantity:	100 µg
Target:	PSMD7
Binding Specificity:	AA 1-324, Regulatory Subunit 7
Reactivity:	Human
Host:	Rabbit
Clonality:	Polyclonal
Conjugate:	This PSMD7 antibody is un-conjugated
Application:	Western Blotting (WB), Immunohistochemistry (IHC), ELISA, Immunofluorescence (IF), Immunoprecipitation (IP)

Product Details

Immunogen:	Recombinant Human 26S proteasome non-ATPase regulatory subunit 7 protein (1-324AA)
Isotype:	IgG
Cross-Reactivity:	Human
Purification:	>95%, Protein G purified

Target Details

Target:	PSMD7
Alternative Name:	PSMD7 (PSMD7 Products)
Background:	Background: Acts as a regulatory subunit of the 26S proteasome which is involved in the ATP-

Target Details

dependent degradation of ubiquitinated proteins.

Aliases: 26S proteasome non ATPase regulatory subunit 7 antibody, 26S proteasome non-ATPase regulatory subunit 7 antibody, 26S proteasome regulatory subunit RPN8 antibody, 26S proteasome regulatory subunit S12 antibody, integration site gene, mouse, homolog of antibody, Moloney leukemia virus 34 proviral antibody, Moloney leukemia virus 34 proviral integration antibody, MOV34 antibody, Mov34 homolog antibody, Mov34 protein homolog antibody, MOV34L antibody, P40 antibody, Proteasome (prosome, macropain) 26S subunit, non ATPase 7 antibody, Proteasome (prosome, macropain) 26S subunit, non ATPase, 7 (Mov34 homolog) antibody, Proteasome 26S S12 antibody, Proteasome 26S subunit, no-ATPase, 7 antibody, Proteasome subunit p40 antibody, PSD7_HUMAN antibody, PSMD 7 antibody, PSMD7 antibody, Rpn8 antibody, S12 antibody

UniProt: [P51665](#)

Pathways: [Mitotic G1-G1/S Phases](#), [DNA Replication](#), [Synthesis of DNA](#), [Ubiquitin Proteasome Pathway](#)

Application Details

Application Notes: Recommended dilution: WB:1:1000-1:5000, IHC:1:500-1:1000, IF:1:50-1:500, IP:1:200-1:2000,

Restrictions: For Research Use only

Handling

Format: Liquid

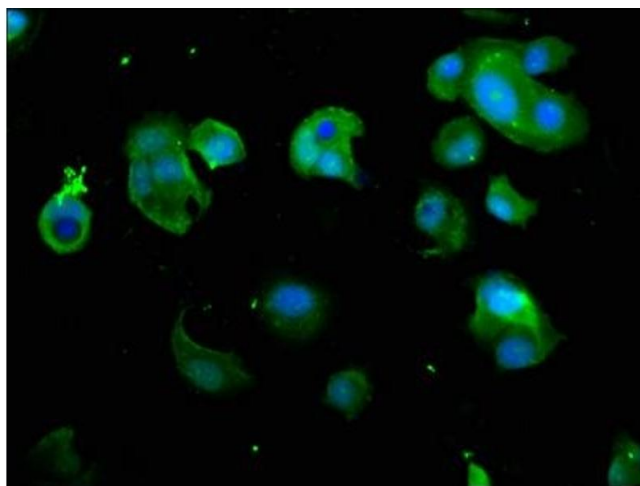
Buffer: Preservative: 0.03 % Proclin 300
Constituents: 50 % Glycerol, 0.01M PBS, PH 7.4

Preservative: ProClin

Precaution of Use: This product contains ProClin: a POISONOUS AND HAZARDOUS SUBSTANCE which should be handled by trained staff only.

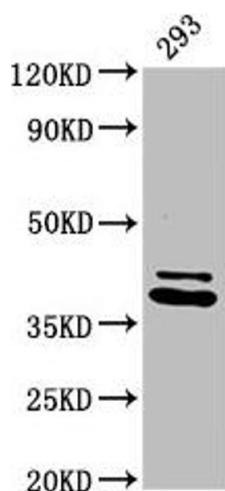
Storage: -20 °C,-80 °C

Storage Comment: Upon receipt, store at -20°C or -80°C. Avoid repeated freeze.



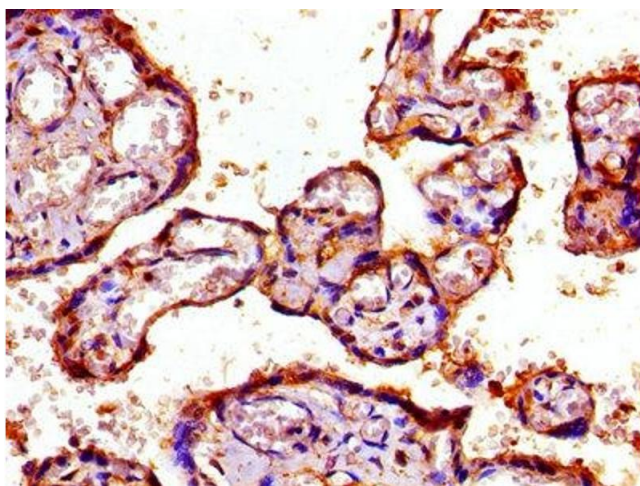
Immunofluorescence

Image 1. Immunofluorescence staining of MCF-7 cells with ABIN7142217 at 1:266, counter-stained with DAPI. The cells were fixed in 4 % formaldehyde, permeabilized using 0.2 % Triton X-100 and blocked in 10 % normal Goat Serum. The cells were then incubated with the antibody overnight at 4 °C. The secondary antibody was Alexa Fluor 488-conjugated AffiniPure Goat Anti-Rabbit IgG(H+L).



Western Blotting

Image 2. Western Blot Positive WB detected in: 293 whole cell lysate. All lanes: PSMD7 antibody at 3.2 µg/mL. Secondary Goat polyclonal to rabbit IgG at 1/50000 dilution. Predicted band size: 38 kDa. Observed band size: 38 kDa.



Immunohistochemistry

Image 3. IHC image of ABIN7142217 diluted at 1:800 and staining in paraffin-embedded human placenta tissue performed on a Leica Bond™ system. After dewaxing and hydration, antigen retrieval was mediated by high pressure in a citrate buffer (pH 6.0). Section was blocked with 10 % normal goat serum 30 min at RT. Then primary antibody (1 % BSA) was incubated at 4 °C overnight. The primary is detected by a biotinylated secondary antibody and visualized using an HRP conjugated SP system.