

Datasheet for ABIN7142226

**anti-PSMC6 antibody (Regulatory Subunit 10B)**[Go to Product page](#)**3** Images

## Overview

Quantity:	100 µg
Target:	PSMC6
Binding Specificity:	AA 1-260, Regulatory Subunit 10B
Reactivity:	Human
Host:	Rabbit
Clonality:	Polyclonal
Conjugate:	This PSMC6 antibody is un-conjugated
Application:	Western Blotting (WB), ELISA, Immunohistochemistry (IHC)

## Product Details

Immunogen:	Recombinant Human 26S proteasome regulatory subunit 10B protein (1-260AA)
Isotype:	IgG
Cross-Reactivity:	Human, Mouse, Rat
Purification:	>95%, Protein G purified

## Target Details

Target:	PSMC6
Alternative Name:	PSMC6 ( <a href="#">PSMC6 Products</a> )
Background:	Background: Component of the 26S proteasome, a multiprotein complex involved in the ATP-dependent degradation of ubiquitinated proteins. This complex plays a key role in the

## Target Details

maintenance of protein homeostasis by removing misfolded or damaged proteins, which could impair cellular functions, and by removing proteins whose functions are no longer required. Therefore, the proteasome participates in numerous cellular processes, including cell cycle progression, apoptosis, or DNA damage repair. PSMC6 belongs to the heterohexameric ring of AAA (ATPases associated with diverse cellular activities) proteins that unfolds ubiquitinated target proteins that are concurrently translocated into a proteolytic chamber and degraded into peptides.

Aliases: 26S protease regulatory subunit 10B antibody, 26S protease regulatory subunit S10B antibody, 26S proteasome AAA-ATPase subunit RPT4 antibody, CADP44 antibody, P44 antibody, Proteasome 26S subunit ATPase 6 antibody, Proteasome subunit p42 antibody, PRS10\_HUMAN antibody, PSMC6 antibody, Rpt4 antibody, SUG2 antibody

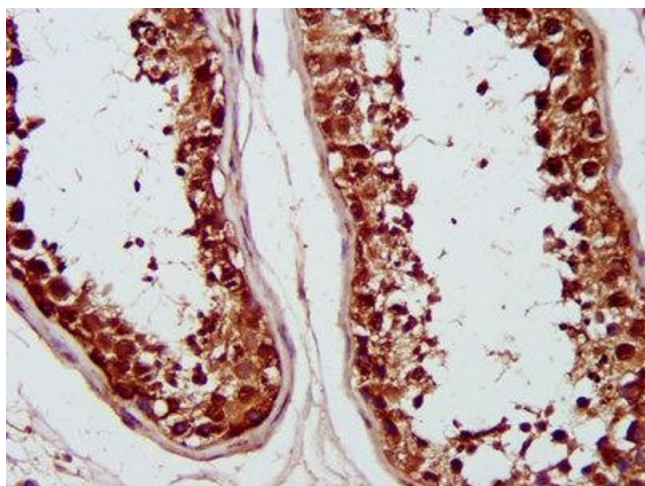
UniProt:	<a href="#">P62333</a>
Pathways:	<a href="#">Mitotic G1-G1/S Phases</a> , <a href="#">DNA Replication</a> , <a href="#">Synthesis of DNA</a> , <a href="#">Ubiquitin Proteasome Pathway</a>

## Application Details

Application Notes:	Recommended dilution: WB:1:500-1:5000, IHC:1:500-1:2000,
Restrictions:	For Research Use only

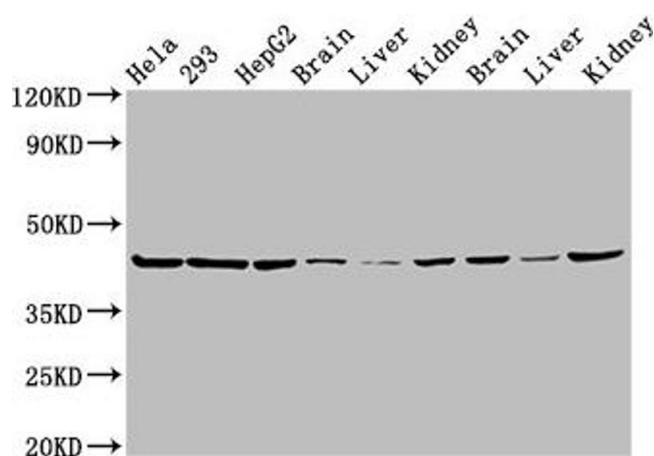
## Handling

Format:	Liquid
Buffer:	Preservative: 0.03 % Proclin 300 Constituents: 50 % Glycerol, 0.01M PBS, PH 7.4
Preservative:	ProClin
Precaution of Use:	This product contains ProClin: a POISONOUS AND HAZARDOUS SUBSTANCE which should be handled by trained staff only.
Storage:	-20 °C,-80 °C
Storage Comment:	Upon receipt, store at -20°C or -80°C. Avoid repeated freeze.



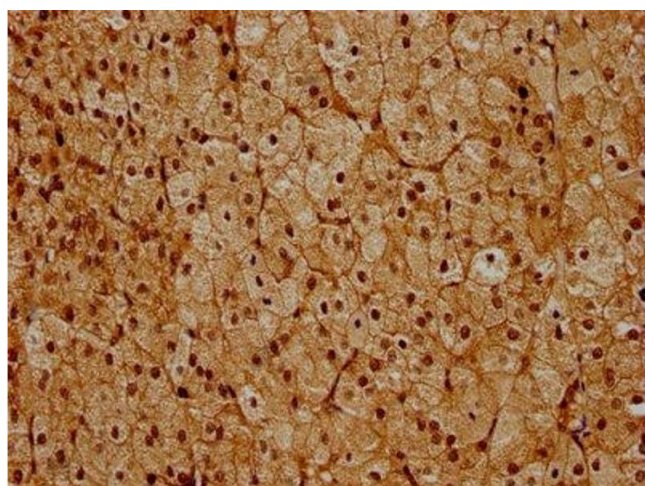
#### Immunohistochemistry

**Image 1.** IHC image of ABIN7142226 diluted at 1:1200 and staining in paraffin-embedded human testis tissue performed on a Leica Bond™ system. After dewaxing and hydration, antigen retrieval was mediated by high pressure in a citrate buffer (pH 6.0). Section was blocked with 10% normal goat serum 30min at RT. Then primary antibody (1% BSA) was incubated at 4°C overnight. The primary is detected by a biotinylated secondary antibody and visualized using an HRP conjugated SP system.



#### Western Blotting

**Image 2.** Western Blot Positive WB detected in: HeLa whole cell lysate, 293 whole cell lysate, HepG2 whole cell lysate, Mouse brain tissue, Mouse liver tissue, Mouse kidney tissue, Rat brain tissue, Rat liver tissue, Rat kidney tissue All lanes: PSMC6 antibody at 3 µg/mL Secondary Goat polyclonal to rabbit IgG at 1/50000 dilution Predicted band size: 45 kDa Observed band size: 45 kDa



#### Immunohistochemistry

**Image 3.** IHC image of ABIN7142226 diluted at 1:600 and staining in paraffin-embedded human adrenal gland tissue performed on a Leica Bond™ system. After dewaxing and hydration, antigen retrieval was mediated by high pressure in a citrate buffer (pH 6.0). Section was blocked with 10% normal goat serum 30min at RT. Then primary antibody (1% BSA) was incubated at 4°C overnight. The primary is detected by a biotinylated secondary antibody and visualized using an HRP conjugated SP system.