

Datasheet for ABIN7142230

anti-PSMC3 antibody (Regulatory Subunit 6A)**3** Images[Go to Product page](#)

Overview

Quantity:	100 µg
Target:	PSMC3
Binding Specificity:	AA 1-300, Regulatory Subunit 6A
Reactivity:	Human
Host:	Rabbit
Clonality:	Polyclonal
Conjugate:	This PSMC3 antibody is un-conjugated
Application:	Immunohistochemistry (IHC), Immunofluorescence (IF), ELISA

Product Details

Immunogen:	Recombinant Human 26S proteasome regulatory subunit 6A protein (1-300AA)
Isotype:	IgG
Cross-Reactivity:	Human
Purification:	>95%, Protein G purified

Target Details

Target:	PSMC3
Alternative Name:	PSMC3 (PSMC3 Products)
Background:	Background: Component of the 26S proteasome, a multiprotein complex involved in the ATP-dependent degradation of ubiquitinated proteins. This complex plays a key role in the

Target Details

maintenance of protein homeostasis by removing misfolded or damaged proteins, which could impair cellular functions, and by removing proteins whose functions are no longer required. Therefore, the proteasome participates in numerous cellular processes, including cell cycle progression, apoptosis, or DNA damage repair. PSMC3 belongs to the heterohexameric ring of AAA (ATPases associated with diverse cellular activities) proteins that unfolds ubiquitinated target proteins that are concurrently translocated into a proteolytic chamber and degraded into peptides.

Aliases: 26S protease regulatory subunit 6A antibody, 26S proteasome AAA-ATPase subunit RPT5 antibody, Human immunodeficiency virus tat transactivator binding protein 1 antibody, MGC8487 antibody, Proteasome (prosome macropain) 26S subunit ATPase 3 antibody, Proteasome 26S ATPase subunit 3 antibody, Proteasome 26S subunit ATPase 3 antibody, Proteasome subunit P50 antibody, PRS6A_HUMAN antibody, PSMC 3 antibody, PSMC3 antibody, Tat binding protein 1 antibody, TAT-binding protein 1 antibody, TBP-1 antibody, TBP1 antibody

UniProt: [P17980](#)

Pathways: [Mitotic G1-G1/S Phases](#), [DNA Replication](#), [Synthesis of DNA](#), [Ubiquitin Proteasome Pathway](#)

Application Details

Application Notes: Recommended dilution: IHC:1:20-1:200, IF:1:500-1:1000,

Restrictions: For Research Use only

Handling

Format: Liquid

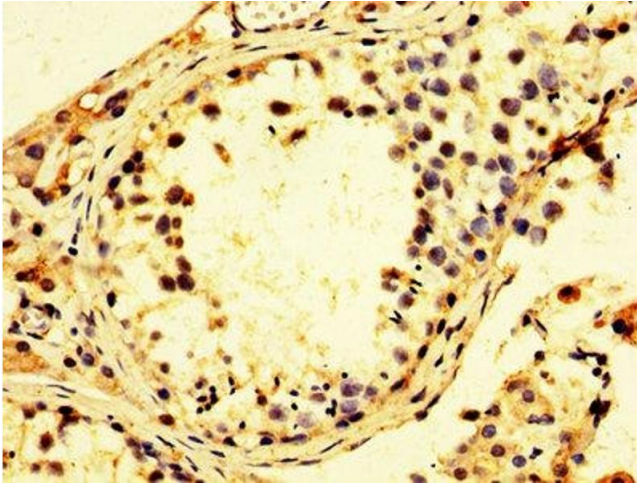
Buffer: Preservative: 0.03 % Proclin 300
Constituents: 50 % Glycerol, 0.01M PBS, PH 7.4

Preservative: ProClin

Precaution of Use: This product contains ProClin: a POISONOUS AND HAZARDOUS SUBSTANCE which should be handled by trained staff only.

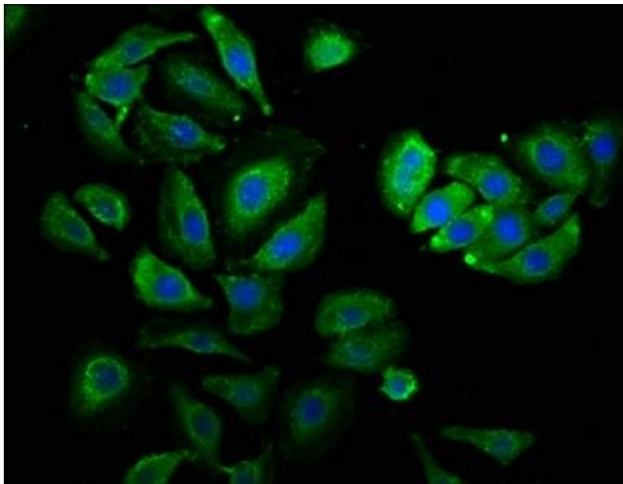
Storage: -20 °C, -80 °C

Storage Comment: Upon receipt, store at -20°C or -80°C. Avoid repeated freeze.



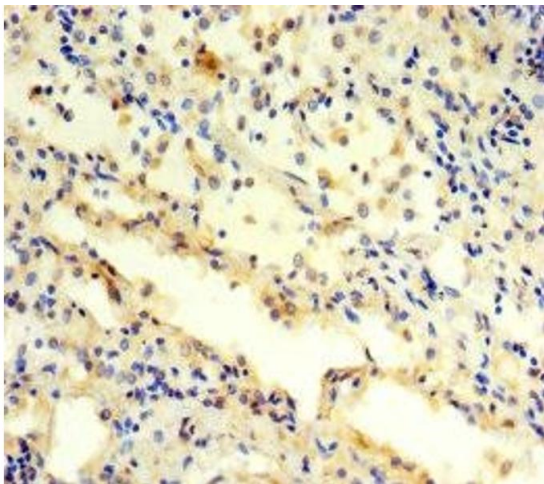
Immunohistochemistry

Image 1. Immunohistochemistry of paraffin-embedded human testis tissue using ABIN7142230 at dilution of 1:100



Immunofluorescence

Image 2. Immunofluorescence staining of A549 cells with ABIN7142230 at 1:530, counter-stained with DAPI. The cells were fixed in 4% formaldehyde, permeabilized using 0.2% Triton X-100 and blocked in 10% normal Goat Serum. The cells were then incubated with the antibody overnight at 4°C. The secondary antibody was Alexa Fluor 488-conjugated AffiniPure Goat Anti-Rabbit IgG(H+L).



Immunohistochemistry

Image 3. Immunohistochemistry of paraffin-embedded human lung cancer using ABIN7142230 at dilution of 1:100