

Datasheet for ABIN7142238

**anti-PSMC5 antibody (Regulatory Subunit 8)****2** Images[Go to Product page](#)

## Overview

Quantity:	100 µg
Target:	PSMC5
Binding Specificity:	AA 253-324, Regulatory Subunit 8
Reactivity:	Human
Host:	Rabbit
Clonality:	Polyclonal
Conjugate:	This PSMC5 antibody is un-conjugated
Application:	Western Blotting (WB), Immunofluorescence (IF), ELISA

## Product Details

Immunogen:	Recombinant Human 26S proteasome regulatory subunit 8 protein (253-324AA)
Isotype:	IgG
Cross-Reactivity:	Human
Purification:	>95%, Protein G purified

## Target Details

Target:	PSMC5
Alternative Name:	PSMC5 ( <a href="#">PSMC5 Products</a> )
Background:	Background: Component of the 26S proteasome, a multiprotein complex involved in the ATP-dependent degradation of ubiquitinated proteins. This complex plays a key role in the

## Target Details

maintenance of protein homeostasis by removing misfolded or damaged proteins, which could impair cellular functions, and by removing proteins whose functions are no longer required. Therefore, the proteasome participates in numerous cellular processes, including cell cycle progression, apoptosis, or DNA damage repair. PSMC5 belongs to the heterohexameric ring of AAA (ATPases associated with diverse cellular activities) proteins that unfolds ubiquitinated target proteins that are concurrently translocated into a proteolytic chamber and degraded into peptides.

Aliases: 26S protease regulatory subunit 8 antibody, 26S proteasome AAA-ATPase subunit RPT6 antibody, Cim3 antibody, MSUG1 protein antibody, p45 antibody, p45/SUG antibody, Proteasome 26S ATPase subunit 5 antibody, Proteasome 26S subunit ATPase 5 antibody, Proteasome prosome macropain 26S subunit ATPase 5 antibody, Proteasome subunit p45 antibody, PRS8\_HUMAN antibody, PSMC5 antibody, Rpt6 antibody, S8 antibody, SUG1 antibody, Tat binding protein homolog 10 antibody, TBP10 antibody, Thyroid hormone receptor interacting protein 1 antibody, Thyroid hormone receptor-interacting protein 1 antibody, Thyroid receptor interactor 1 antibody, TRIP1 antibody, TRIP1(SUG1) antibody

UniProt: [P62195](#)

Pathways: [Mitotic G1-G1/S Phases](#), [DNA Replication](#), [Synthesis of DNA](#), [Ubiquitin Proteasome Pathway](#)

## Application Details

Application Notes: Recommended dilution: WB:1:2000-1:10000, IF:1:50-1:500,

Restrictions: For Research Use only

## Handling

Format: Liquid

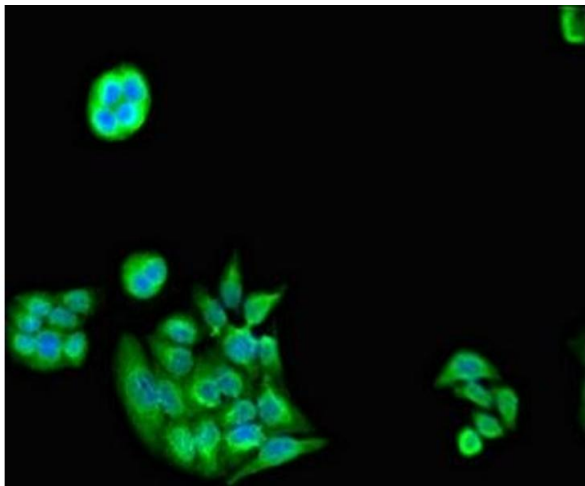
Buffer: Preservative: 0.03 % Proclin 300  
Constituents: 50 % Glycerol, 0.01M PBS, pH 7.4

Preservative: ProClin

Precaution of Use: This product contains ProClin: a POISONOUS AND HAZARDOUS SUBSTANCE which should be handled by trained staff only.

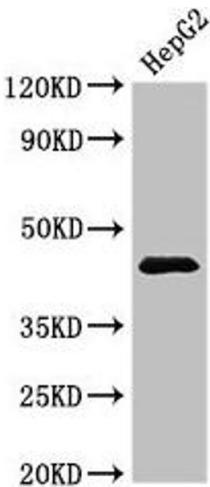
Storage: -20 °C,-80 °C

Storage Comment: Upon receipt, store at -20°C or -80°C. Avoid repeated freeze.



### Immunofluorescence

**Image 1.** Immunofluorescent analysis of PC-3 cells using ABIN7142238 at dilution of 1:100 and Alexa Fluor 488-conjugated AffiniPure Goat Anti-Rabbit IgG(H+L)



### Western Blotting

**Image 2.** Western Blot Positive WB detected in: HepG2 whole cell lysate All lanes: PSMC5 antibody at 3.5 µg/mL Secondary Goat polyclonal to rabbit IgG at 1/50000 dilution Predicted band size: 46, 45 kDa Observed band size: 46 kDa