



Datasheet for ABIN7142267
anti-MRPS31 antibody (AA 66-395)



[Go to Product page](#)

2 Images

Overview

Quantity:	100 µg
Target:	MRPS31
Binding Specificity:	AA 66-395
Reactivity:	Human
Host:	Rabbit
Clonality:	Polyclonal
Conjugate:	This MRPS31 antibody is un-conjugated
Application:	Western Blotting (WB), ELISA, Immunohistochemistry (IHC)

Product Details

Immunogen:	Recombinant Human 28S ribosomal protein S31, mitochondrial protein (66-395AA)
Isotype:	IgG
Cross-Reactivity:	Human
Purification:	>95%, Protein G purified

Target Details

Target:	MRPS31
Alternative Name:	MRPS31 (MRPS31 Products)
Background:	Background: mitochondrial inner membrane, mitochondrion, nucleolus, poly(A) RNA binding, protein domain specific binding, mitochondrial translation, mitochondrial translational

Target Details

elongation, mitochondrial translational initiation, mitochondrial translational termination, organelle organization

Aliases: 28S ribosomal protein S31 antibody, 28S ribosomal protein S31, mitochondrial antibody, Imogen 38 antibody, IMOGN38 antibody, mitochondrial antibody, MRP-S31 antibody, MRPS31 antibody, RT31_HUMAN antibody, S31mt antibody

UniProt: [Q92665](#)

Application Details

Application Notes: Recommended dilution: WB:1:500-1:2000, IHC:1:20-1:200,

Restrictions: For Research Use only

Handling

Format: Liquid

Buffer: Preservative: 0.03 % Proclin 300
Constituents: 50 % Glycerol, 0.01M PBS, PH 7.4

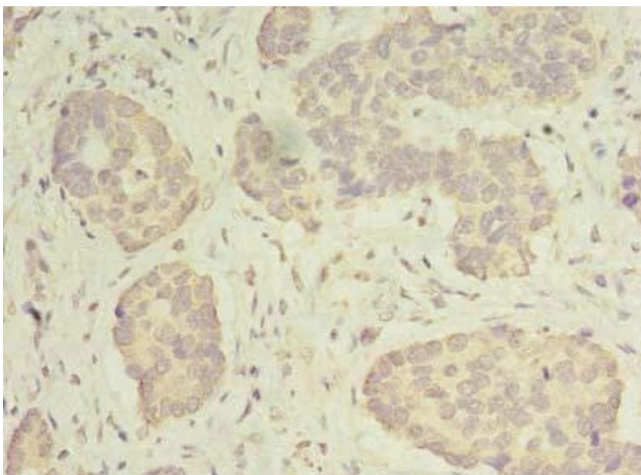
Preservative: ProClin

Precaution of Use: This product contains ProClin: a POISONOUS AND HAZARDOUS SUBSTANCE which should be handled by trained staff only.

Storage: -20 °C,-80 °C

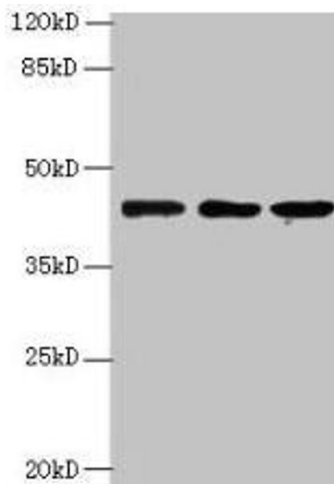
Storage Comment: Upon receipt, store at -20°C or -80°C. Avoid repeated freeze.

Images



Immunohistochemistry

Image 1. Immunohistochemistry of paraffin-embedded human gastric cancer using ABIN7142267 at dilution of 1:100



Western Blotting

Image 2. Western blot All lanes: MRPS31 antibody at 8 μ g/mL Lane 1: HeLa whole cell lysate Lane 2: MCF-7 whole cell lysate Lane 3: Jurkat whole cell lysate Secondary Goat polyclonal to rabbit IgG at 1/10000 dilution Predicted band size: 46 kDa Observed band size: 46 kDa