



Datasheet for ABIN7142271
anti-MRPS36 antibody (AA 1-103)



[Go to Product page](#)

1 Image

Overview

Quantity:	100 µg
Target:	MRPS36
Binding Specificity:	AA 1-103
Reactivity:	Human
Host:	Rabbit
Clonality:	Polyclonal
Conjugate:	This MRPS36 antibody is un-conjugated
Application:	ELISA, Immunohistochemistry (IHC)

Product Details

Immunogen:	Recombinant Human 28S ribosomal protein S36, mitochondrial protein (1-103AA)
Isotype:	IgG
Cross-Reactivity:	Human
Purification:	>95%, Protein G purified

Target Details

Target:	MRPS36
Alternative Name:	MRPS36 (MRPS36 Products)
Background:	Background: mitochondrial inner membrane, mitochondrial oxoglutarate dehydrogenase complex, mitochondrial small ribosomal subunit, mitochondrion, structural constituent of

Target Details

ribosome, 2-oxoglutarate metabolic process, mitochondrial translation, mitochondrial translational elongation, mitochondrial translational initiation, mitochondrial translational termination

Aliases: 1110018B13Rik antibody, 28S ribosomal protein S36 antibody, DC47 antibody, MGC22896 antibody, mitochondrial antibody, MRP-S36 antibody, MRPS36 antibody, OTTHUMP00000222036 antibody, RT36_HUMAN antibody, S36mt antibody

UniProt: [P82909](#)

Application Details

Application Notes: Recommended dilution: IHC:1:20-1:200,

Restrictions: For Research Use only

Handling

Format: Liquid

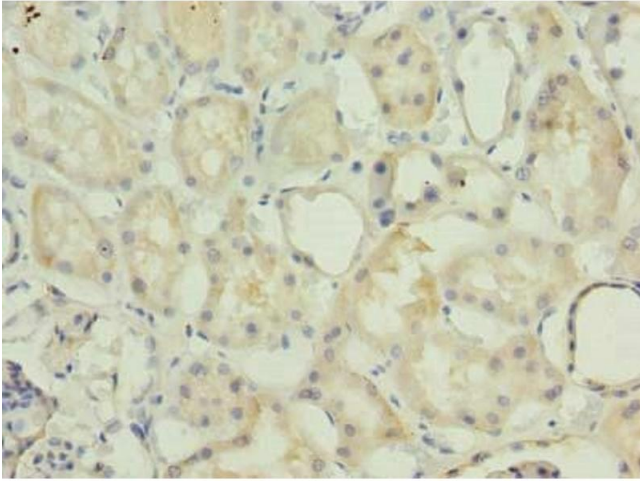
Buffer: Preservative: 0.03 % Proclin 300
Constituents: 50 % Glycerol, 0.01M PBS, PH 7.4

Preservative: ProClin

Precaution of Use: This product contains ProClin: a POISONOUS AND HAZARDOUS SUBSTANCE which should be handled by trained staff only.

Storage: -20 °C,-80 °C

Storage Comment: Upon receipt, store at -20°C or -80°C. Avoid repeated freeze.



Immunohistochemistry

Image 1. Immunohistochemistry of paraffin-embedded human kidney tissue using ABIN7142271 at dilution of 1:100