

Datasheet for ABIN7142292  
**anti-HMGCR antibody (AA 588-887)**[Go to Product page](#)

## 3 Images

## Overview

Quantity:	100 µg
Target:	HMGCR
Binding Specificity:	AA 588-887
Reactivity:	Human
Host:	Rabbit
Clonality:	Polyclonal
Conjugate:	This HMGCR antibody is un-conjugated
Application:	Western Blotting (WB), Immunohistochemistry (IHC), ELISA, Immunofluorescence (IF)

## Product Details

Immunogen:	Recombinant Human 3-hydroxy-3-methylglutaryl-coenzyme A reductase protein (588-887AA)
Isotype:	IgG
Cross-Reactivity:	Human
Purification:	>95%, Protein G purified

## Target Details

Target:	HMGCR
Alternative Name:	HMGCR ( <a href="#">HMGCR Products</a> )
Background:	Background: Transmembrane glycoprotein that is the rate-limiting enzyme in cholesterol biosynthesis as well as in the biosynthesis of nonsterol isoprenoids that are essential for

## Target Details

normal cell function including ubiquinone and geranylgeranyl proteins.

Aliases: 3 hydroxy 3 methylglutaryl CoA reductase antibody, 3 hydroxy 3 methylglutaryl Coenzyme A reductase antibody, 3 hydroxymethylglutaryl CoA reductase antibody, 3-hydroxy-3-methylglutaryl CoA reductase (NADPH) antibody, 3-hydroxy-3-methylglutaryl-coenzyme A reductase antibody, 3H3M antibody, HMDH\_HUMAN antibody, HMG CoA reductase antibody, HMG CoAR antibody, HMG-CoA reductase antibody, Hmgcr antibody, Hydroxymethylglutaryl CoA reductase antibody, LDLQC3 antibody, MGC103269 antibody, Red antibody

UniProt: [P04035](#)

Pathways: [AMPK Signaling](#), [Negative Regulation of Hormone Secretion](#), [Regulation of Lipid Metabolism by PPARalpha](#)

## Application Details

Application Notes: Recommended dilution: WB:1:500-1:2000, IHC:1:200-1:500, IF:1:50-1:200,

Restrictions: For Research Use only

## Handling

Format: Liquid

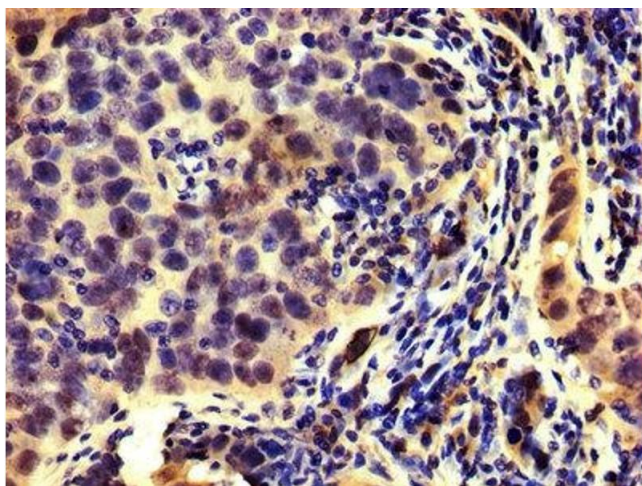
Buffer: Preservative: 0.03 % Proclin 300  
Constituents: 50 % Glycerol, 0.01M PBS, PH 7.4

Preservative: ProClin

Precaution of Use: This product contains ProClin: a POISONOUS AND HAZARDOUS SUBSTANCE which should be handled by trained staff only.

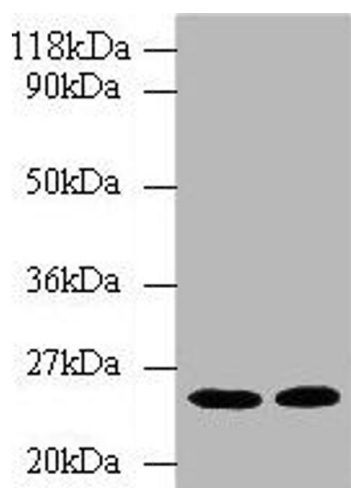
Storage: -20 °C, -80 °C

Storage Comment: Upon receipt, store at -20°C or -80°C. Avoid repeated freeze.



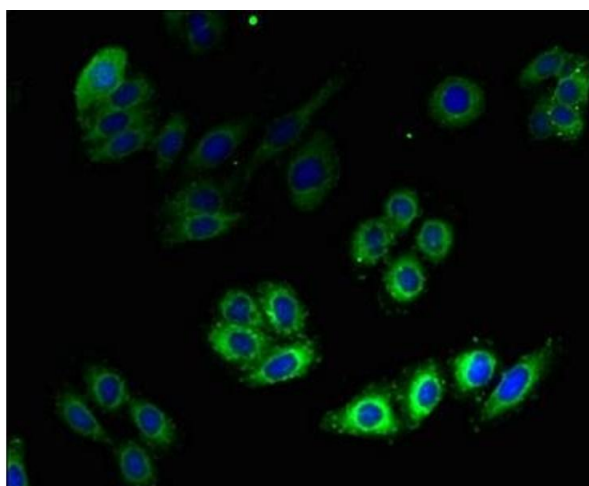
### Immunohistochemistry

**Image 1.** IHC image of ABIN7142292 diluted at 1:200 and staining in paraffin-embedded human pancreatic cancer performed on a Leica Bond™ system. After dewaxing and hydration, antigen retrieval was mediated by high pressure in a citrate buffer (pH 6.0). Section was blocked with 10% normal goat serum 30min at RT. Then primary antibody (1% BSA) was incubated at 4°C overnight. The primary is detected by a biotinylated secondary antibody and visualized using an HRP conjugated SP system.



### Western Blotting

**Image 2.** Western blot All lanes: HMGCRC antibody at 2 µg/mL Lane 1: Hela whole cell lysate Lane 2: 293T whole cell lysate Secondary Goat polyclonal to rabbit IgG at 1/10000 dilution Predicted band size: 98, 93, 100 kDa Observed band size: 25 kDa



### Immunofluorescence

**Image 3.** Immunofluorescent analysis of HepG2 cells using ABIN7142292 at dilution of 1:100 and Alexa Fluor 488-conjugated AffiniPure Goat Anti-Rabbit IgG(H+L)