



[Go to Product page](#)

Datasheet for ABIN7142322

anti-ACAA1 antibody (AA 27-331)

2 Images

Overview

Quantity:	100 µg
Target:	ACAA1
Binding Specificity:	AA 27-331
Reactivity:	Human
Host:	Rabbit
Clonality:	Polyclonal
Conjugate:	This ACAA1 antibody is un-conjugated
Application:	ELISA, Immunohistochemistry (IHC)

Product Details

Immunogen:	Recombinant Human 3-ketoacyl-CoA thiolase, peroxisomal protein (27-331AA)
Isotype:	IgG
Cross-Reactivity:	Human
Purification:	>95%, Protein G purified

Target Details

Target:	ACAA1
Alternative Name:	ACAA1 (ACAA1 Products)
Background:	3 ketoacyl CoA thiolase peroxisomal antibody, 3-ketoacyl-CoA thiolase antibody, ACAA antibody, ACAA1 antibody, Acetyl CoA acyltransferase 1 antibody, Acetyl Coenzyme A

Target Details

acyltransferase 1 antibody, Acetyl-CoA acyltransferase antibody, Acetyl-Coenzyme A acyltransferase 1 (peroxisomal 3 oxoacyl Coenzyme A antibody, Beta ketothiolase antibody, Beta-ketothiolase antibody, Peroxisomal 3 oxoacyl CoA thiolase antibody, Peroxisomal 3 oxoacyl Coenzyme A thiolase antibody, Peroxisomal 3-oxoacyl-CoA thiolase antibody, peroxisomal antibody, PTHIO antibody, THIK_HUMAN antibody, THIO antibody

UniProt: [P09110](#)

Pathways: [Monocarboxylic Acid Catabolic Process](#)

Application Details

Application Notes: Recommended dilution: IHC:1:20-1:200,

Restrictions: For Research Use only

Handling

Format: Liquid

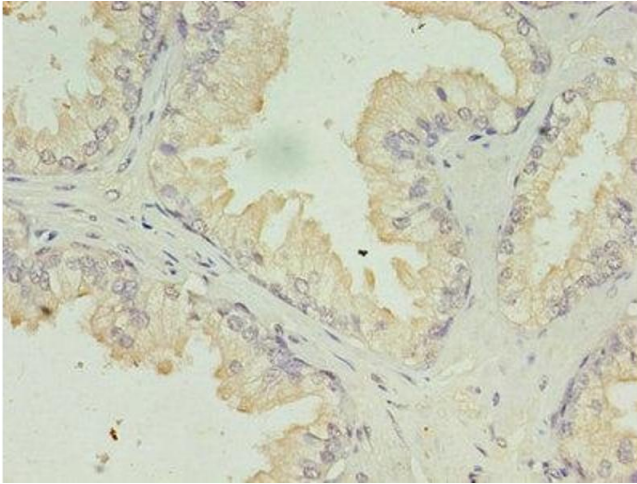
Buffer: Preservative: 0.03 % Proclin 300
Constituents: 50 % Glycerol, 0.01M PBS, PH 7.4

Preservative: ProClin

Precaution of Use: This product contains ProClin: a POISONOUS AND HAZARDOUS SUBSTANCE which should be handled by trained staff only.

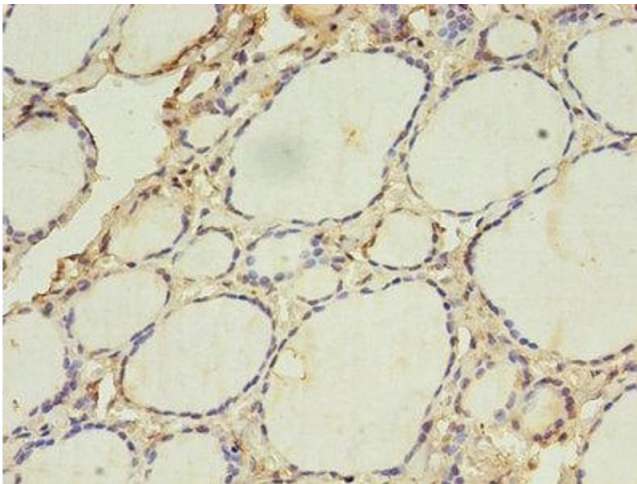
Storage: -20 °C,-80 °C

Storage Comment: Upon receipt, store at -20°C or -80°C. Avoid repeated freeze.



Immunohistochemistry

Image 1. Immunohistochemistry of paraffin-embedded human prostate cancer using ABIN7142322 at dilution of 1:100



Immunohistochemistry

Image 2. Immunohistochemistry of paraffin-embedded human thyroid tissue using ABIN7142322 at dilution of 1:100