



[Go to Product page](#)

Datasheet for ABIN7142389

## anti-MRPL28 antibody (AA 1-256)

### 3 Images

#### Overview

Quantity:	100 µL
Target:	MRPL28
Binding Specificity:	AA 1-256
Reactivity:	Human
Host:	Rabbit
Clonality:	Polyclonal
Conjugate:	This MRPL28 antibody is un-conjugated
Application:	Western Blotting (WB), ELISA, Immunohistochemistry (IHC), Immunofluorescence (IF)

#### Product Details

Immunogen:	Recombinant Human 39S ribosomal protein L28, mitochondrial protein (1-256AA)
Isotype:	IgG
Cross-Reactivity:	Human
Purification:	Antigen Affinity Purified

#### Target Details

Target:	MRPL28
Alternative Name:	MRPL28 ( <a href="#">MRPL28 Products</a> )
Background:	39S ribosomal protein L28 antibody, 39S ribosomal protein L28 mitochondrial antibody, 39S ribosomal protein L28 mitochondrial precursor antibody, HGNC6756 antibody, L28mt antibody,

## Target Details

---

MAAT 1 antibody, MAAT1 antibody, Melanoma antigen p15 antibody, Melanoma associated antigen recognised by cytotoxic T lymphocytes antibody, Melanoma associated antigen recognized by T lymphocytes antibody, Melanoma-associated antigen recognized by T-lymphocytes antibody, MGC8499 antibody, mitochondrial antibody, Mitochondrial ribosomal protein L28 antibody, MRP L28 antibody, MRP-L28 antibody, MRPL 28 antibody, mrpl28 antibody, P15 antibody, RM28\_HUMAN antibody

UniProt: [Q13084](#)

Pathways: [Mitotic G1-G1/S Phases](#)

## Application Details

---

Application Notes: Recommended dilution: WB:1:500-1:5000, IHC:1:20-1:200, IF:1:50-1:200,

Restrictions: For Research Use only

## Handling

---

Format: Liquid

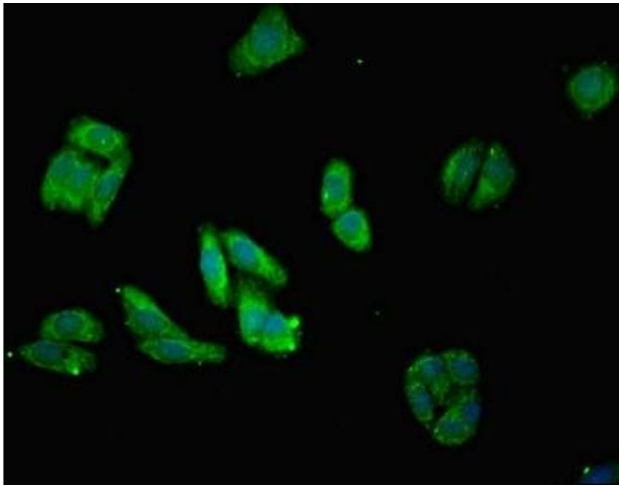
Buffer: PBS with 0.02 % sodium azide, 50 % glycerol, pH 7.3.

Preservative: Sodium azide

Precaution of Use: This product contains Sodium azide: a POISONOUS AND HAZARDOUS SUBSTANCE which should be handled by trained staff only.

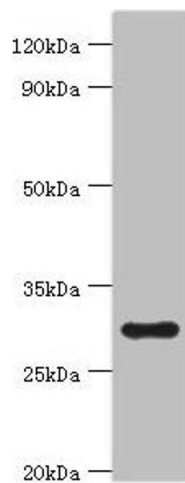
Storage: -20 °C,-80 °C

Storage Comment: Upon receipt, store at -20°C or -80°C. Avoid repeated freeze.



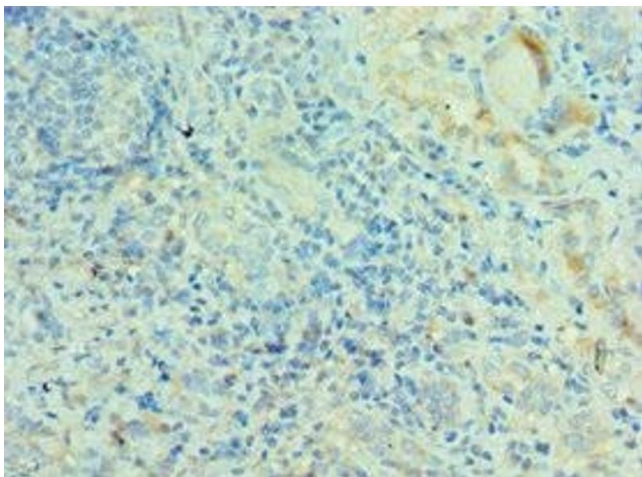
### Immunofluorescence

**Image 1.** Immunofluorescent analysis of HepG2 cells using ABIN7142389 at dilution of 1:100 and Alexa Fluor 488-conjugated AffiniPure Goat Anti-Rabbit IgG(H+L)



### Western Blotting

**Image 2.** Western blot All lanes: 39S ribosomal protein L28, mitochondrial antibody at 2 µg/mL + HeLa whole cell lysate Secondary Goat polyclonal to rabbit IgG at 1/10000 dilution Predicted band size: 30 kDa Observed band size: 30 kDa



### Immunohistochemistry

**Image 3.** Immunohistochemistry of paraffin-embedded human kidney tissue using ABIN7142389 at dilution of 1:100