



[Go to Product page](#)

Datasheet for ABIN7142427  
**anti-MRPL48 antibody (AA 29-212)**

2 Images

Overview

Quantity:	100 µg
Target:	MRPL48
Binding Specificity:	AA 29-212
Reactivity:	Human
Host:	Rabbit
Clonality:	Polyclonal
Conjugate:	This MRPL48 antibody is un-conjugated
Application:	Western Blotting (WB), ELISA, Immunohistochemistry (IHC)

Product Details

Immunogen:	Recombinant Human 39S ribosomal protein L48, mitochondrial protein (29-212AA)
Isotype:	IgG
Cross-Reactivity:	Human, Mouse
Purification:	>95%, Protein G purified

Target Details

Target:	MRPL48
Alternative Name:	MRPL48 ( <a href="#">MRPL48 Products</a> )
Background:	Background: mitochondrial inner membrane, mitochondrial ribosome, mitochondrial translation, mitochondrial translational elongation, mitochondrial translational initiation, mitochondrial

## Target Details

---

translational termination, organelle organization

Aliases: 39S ribosomal protein L48 antibody, 39S ribosomal protein L48 mitochondrial antibody, CGI 118 antibody, CGI-118 antibody, FLJ17047 antibody, FLJ99260 antibody, HSPC290 antibody, L48mt antibody, MGC13323 antibody, mitochondrial antibody, Mitochondrial ribosomal protein L48 antibody, MRP L48 antibody, MRP-L48 antibody, MRPL48 antibody, RM48\_HUMAN antibody

---

UniProt: [Q96GC5](#)

## Application Details

---

Application Notes: Recommended dilution: WB:1:500-1:2000, IHC:1:20-1:200,

Restrictions: For Research Use only

## Handling

---

Format: Liquid

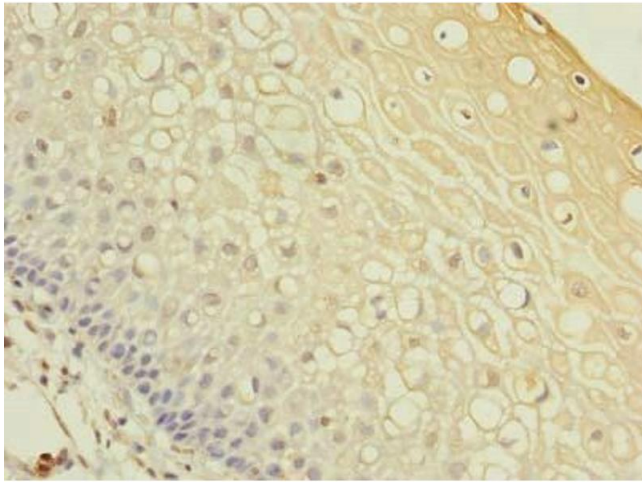
Buffer: Preservative: 0.03 % Proclin 300  
Constituents: 50 % Glycerol, 0.01M PBS, PH 7.4

Preservative: ProClin

Precaution of Use: This product contains ProClin: a POISONOUS AND HAZARDOUS SUBSTANCE which should be handled by trained staff only.

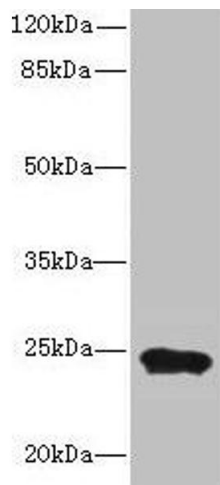
Storage: -20 °C,-80 °C

Storage Comment: Upon receipt, store at -20°C or -80°C. Avoid repeated freeze.



### Immunohistochemistry

**Image 1.** Immunohistochemistry of paraffin-embedded human cervical cancer using ABIN7142427 at dilution of 1:100



### Western Blotting

**Image 2.** Western blot All lanes: MRPL48 antibody at 8  $\mu$ g/mL + Mouse heart tissue Secondary Goat polyclonal to rabbit IgG at 1/10000 dilution Predicted band size: 24, 22 kDa Observed band size: 24 kDa