



[Go to Product page](#)

Datasheet for ABIN7142464
anti-HOGA1 antibody (AA 1-164)

2 Images

Overview

Quantity:	100 µg
Target:	HOGA1
Binding Specificity:	AA 1-164
Reactivity:	Human
Host:	Rabbit
Clonality:	Polyclonal
Conjugate:	This HOGA1 antibody is un-conjugated
Application:	ELISA, Immunofluorescence (IF), Immunohistochemistry (IHC)

Product Details

Immunogen:	Recombinant Human 4-hydroxy-2-oxoglutarate aldolase, mitochondrial protein (1-164AA)
Isotype:	IgG
Cross-Reactivity:	Human
Purification:	>95%, Protein G purified

Target Details

Target:	HOGA1
Alternative Name:	HOGA1 (HOGA1 Products)
Background:	Background: Catalyzes the final step in the metabolic pathway of hydroxyproline. Aliases: HOGA1 antibody, C10orf65 antibody, DHDPSL antibody, 4-hydroxy-2-oxoglutarate

Target Details

aldolase antibody, mitochondrial antibody, EC 4.1.3.16 antibody, Dihydrodipicolinate synthase-like antibody, DHGPS-like protein antibody, Probable 2-keto-4-hydroxyglutarate aldolase antibody, Probable KHG-aldolase antibody, Protein 569272 antibody

UniProt: [Q86XE5](#)

Pathways: [Monocarboxylic Acid Catabolic Process](#)

Application Details

Application Notes: Recommended dilution: IHC:1:200-1:500, IF:1:50-1:200,

Restrictions: For Research Use only

Handling

Format: Liquid

Buffer: Preservative: 0.03 % Proclin 300
Constituents: 50 % Glycerol, 0.01M PBS, pH 7.4

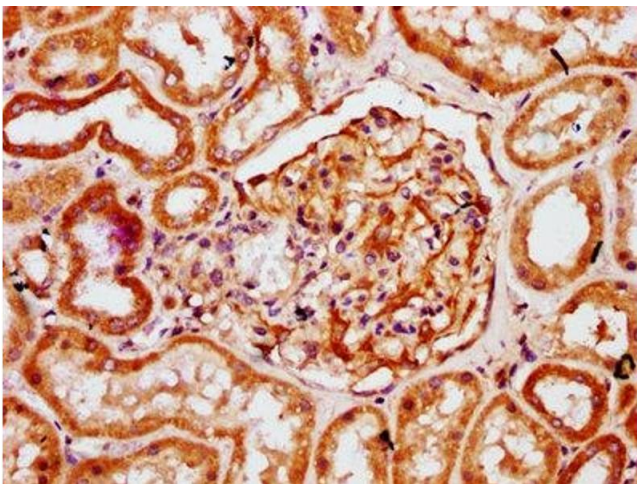
Preservative: ProClin

Precaution of Use: This product contains ProClin: a POISONOUS AND HAZARDOUS SUBSTANCE which should be handled by trained staff only.

Storage: -20 °C,-80 °C

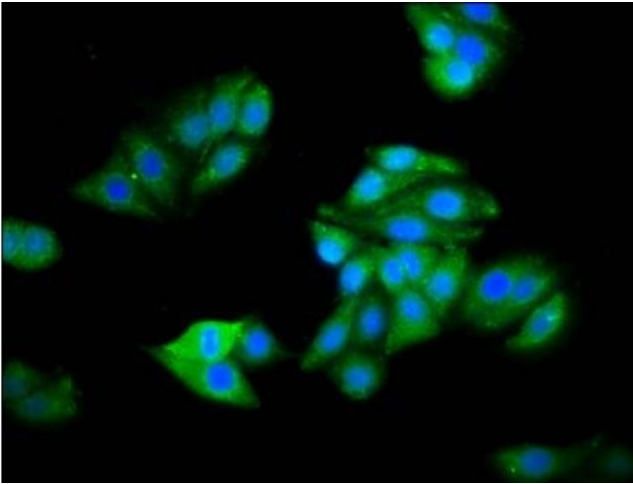
Storage Comment: Upon receipt, store at -20°C or -80°C. Avoid repeated freeze.

Images



Immunohistochemistry

Image 1. IHC image of ABIN7142464 diluted at 1:300 and staining in paraffin-embedded human kidney tissue performed on a Leica Bond™ system. After dewaxing and hydration, antigen retrieval was mediated by high pressure in a citrate buffer (pH 6.0). Section was blocked with 10% normal goat serum 30min at RT. Then primary antibody (1% BSA) was incubated at 4°C overnight. The primary is detected by a biotinylated secondary antibody and visualized using an HRP conjugated SP system.



Immunofluorescence

Image 2. Immunofluorescence staining of HepG2 cells with ABIN7142464 at 1:100, counter-stained with DAPI. The cells were fixed in 4% formaldehyde, permeabilized using 0.2% Triton X-100 and blocked in 10% normal Goat Serum. The cells were then incubated with the antibody overnight at 4°C. The secondary antibody was Alexa Fluor 488-conjugated AffiniPure Goat Anti-Rabbit IgG(H+L).