

Datasheet for ABIN7142484
anti-RPS12 antibody (AA 1-132)[Go to Product page](#)

1 Image

Overview

Quantity:	100 µg
Target:	RPS12
Binding Specificity:	AA 1-132
Reactivity:	Human
Host:	Rabbit
Clonality:	Polyclonal
Conjugate:	This RPS12 antibody is un-conjugated
Application:	Western Blotting (WB), ELISA

Product Details

Immunogen:	Recombinant Human 40S ribosomal protein S12 protein (1-132AA)
Isotype:	IgG
Cross-Reactivity:	Human
Purification:	>95%, Protein G purified

Target Details

Target:	RPS12
Alternative Name:	RPS12 (RPS12 Products)
Background:	Background: 40S ribosomal protein S12 is a protein that in humans is encoded by the RPS12 gene. Ribosomes, the organelles that catalyze protein synthesis, consist of a small 40S subunit

Target Details

and a large 60S subunit. Together these subunits are composed of 4 RNA species and approximately 80 structurally distinct proteins. This gene encodes a ribosomal protein that is a component of the 40S subunit. The protein belongs to the S12E family of ribosomal proteins. It is located in the cytoplasm. Increased expression of this gene in colorectal cancers compared to matched normal colonic mucosa has been observed. As is typical for genes encoding ribosomal proteins, there are multiple processed pseudogenes of this gene dispersed through the genome.

Aliases: 40S ribosomal protein S12 antibody, ribosomal protein S12 antibody, rps12 antibody, RS12_HUMAN antibody, S12 antibody

UniProt: [P25398](#)

Application Details

Application Notes: Recommended dilution: WB:1:500-1:5000,

Restrictions: For Research Use only

Handling

Format: Liquid

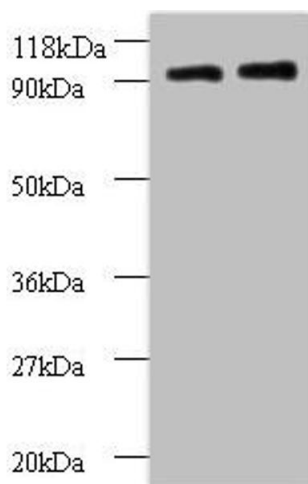
Buffer: Preservative: 0.03 % Proclin 300
Constituents: 50 % Glycerol, 0.01M PBS, PH 7.4

Preservative: ProClin

Precaution of Use: This product contains ProClin: a POISONOUS AND HAZARDOUS SUBSTANCE which should be handled by trained staff only.

Storage: -20 °C,-80 °C

Storage Comment: Upon receipt, store at -20°C or -80°C. Avoid repeated freeze.



Western Blotting

Image 1. Western blot All lanes: RPS12 antibody at 2 μ g/mL Lane 1: EC109 whole cell lysate Lane 2: 293T whole cell lysate Secondary Goat polyclonal to rabbit IgG at 1/15000 dilution Predicted band size: 15 kDa Observed band size: 90 kDa