



[Go to Product page](#)

Datasheet for ABIN7142496  
**anti-RPS15 antibody (AA 63-137)**

4 Images

Overview

Quantity:	100 µg
Target:	RPS15
Binding Specificity:	AA 63-137
Reactivity:	Human
Host:	Rabbit
Clonality:	Polyclonal
Conjugate:	This RPS15 antibody is un-conjugated
Application:	Western Blotting (WB), ELISA, Immunohistochemistry (IHC), Immunofluorescence (IF)

Product Details

Immunogen:	Recombinant Human 40S ribosomal protein S15 protein (63-137AA)
Isotype:	IgG
Cross-Reactivity:	Human
Purification:	>95%, Protein G purified

Target Details

Target:	RPS15
Alternative Name:	RPS15 ( <a href="#">RPS15 Products</a> )
Background:	Background: cytoplasm, cytosol, cytosolic small ribosomal subunit, focal adhesion, membrane, nucleoplasm, nucleus, DNA binding, poly(A) RNA binding, structural constituent of ribosome

## Target Details

Aliases: 40S ribosomal protein S15 antibody, Homolog of rat insulinoma antibody, Insulinoma protein antibody, Ribosomal protein S15 antibody, RIG antibody, RIG protein antibody, RPS 15 antibody, rps15 antibody, RS15\_HUMAN antibody, S15 antibody

UniProt: [P62841](#)

Pathways: [Ribonucleoprotein Complex Subunit Organization](#), [Ribosome Assembly](#)

## Application Details

Application Notes: Recommended dilution: WB:1:500-1:5000, IHC:1:20-1:200, IF:1:50-1:200,

Restrictions: For Research Use only

## Handling

Format: Liquid

Buffer: Preservative: 0.03 % Proclin 300  
Constituents: 50 % Glycerol, 0.01M PBS, pH 7.4

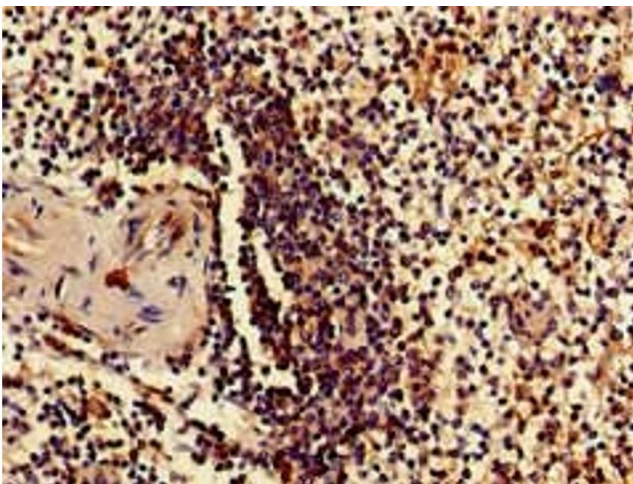
Preservative: ProClin

Precaution of Use: This product contains ProClin: a POISONOUS AND HAZARDOUS SUBSTANCE which should be handled by trained staff only.

Storage: -20 °C,-80 °C

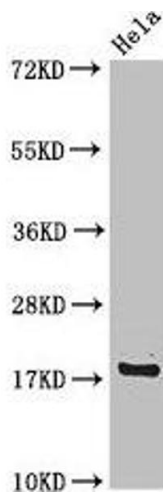
Storage Comment: Upon receipt, store at -20°C or -80°C. Avoid repeated freeze.

## Images



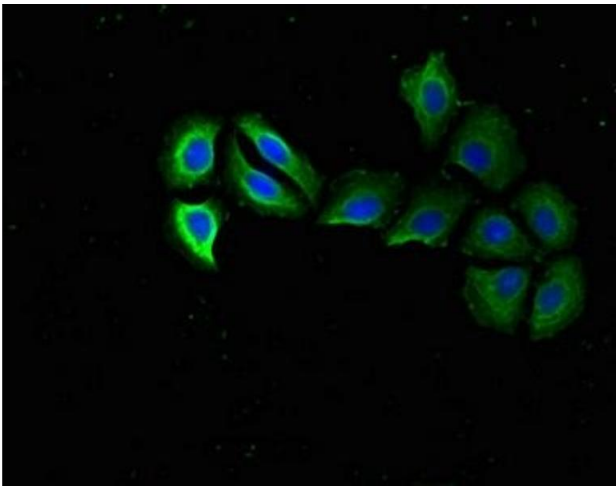
### Immunohistochemistry

**Image 1.** Immunohistochemistry of paraffin-embedded human spleen tissue using ABIN7142496 at dilution of 1:100



### Western Blotting

**Image 2.** Western Blot Positive WB detected in: HeLa whole cell lysate All lanes: RPS15 antibody at 4  $\mu\text{g}/\text{mL}$  Secondary Goat polyclonal to rabbit IgG at 1/50000 dilution Predicted band size: 18 kDa Observed band size: 18 kDa



### Immunofluorescence

**Image 3.** Immunofluorescent analysis of A549 cells using ABIN7142496 at dilution of 1:100 and Alexa Fluor 488-conjugated AffiniPure Goat Anti-Rabbit IgG(H+L)

Please check the [product details page](#) for more images. Overall 4 images are available for ABIN7142496.