



[Go to Product page](#)

Datasheet for ABIN7142516
anti-RPS21 antibody (AA 1-81)

2 Images

Overview

Quantity:	100 µg
Target:	RPS21
Binding Specificity:	AA 1-81
Reactivity:	Human
Host:	Rabbit
Clonality:	Polyclonal
Conjugate:	This RPS21 antibody is un-conjugated
Application:	ELISA, Immunohistochemistry (IHC), Immunofluorescence (IF)

Product Details

Immunogen:	Recombinant Human 40S ribosomal protein S21 protein (1-81AA)
Isotype:	IgG
Cross-Reactivity:	Human
Purification:	>95%, Protein G purified

Target Details

Target:	RPS21
Alternative Name:	RPS21 (RPS21 Products)
Background:	Background: cytoplasm, cytosol, cytosolic small ribosomal subunit, nucleoplasm, small ribosomal subunit, poly(A) RNA binding, protein N-terminus binding, structural constituent of

Target Details

ribosome, endonucleolytic cleavage in ITS1 to separate SSU-rRNA from 5.8S rRNA and LSU-rRNA from tricistronic rRNA transcript (SSU-rRNA, 5.8S rRNA, LSU-rRNA), endonucleolytic cleavage to generate mature 3' end of SSU-rRNA from (SSU-rRNA, 5.8S rRNA, LSU-rRNA)
Aliases: 40S ribosomal protein S21 (Small ribosomal subunit protein eS21), RPS21

UniProt: [Q8WVC2](#)

Application Details

Application Notes: Recommended dilution: IHC:1:20-1:200, IF:1:50-1:200,

Restrictions: For Research Use only

Handling

Format: Liquid

Buffer: Preservative: 0.03 % Proclin 300
Constituents: 50 % Glycerol, 0.01M PBS, pH 7.4

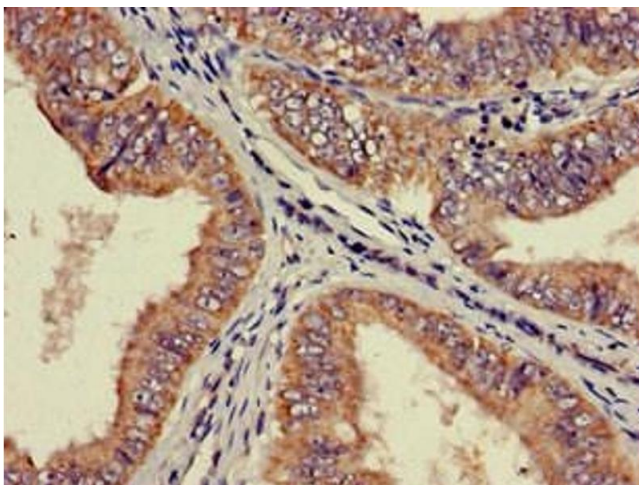
Preservative: ProClin

Precaution of Use: This product contains ProClin: a POISONOUS AND HAZARDOUS SUBSTANCE which should be handled by trained staff only.

Storage: -20 °C,-80 °C

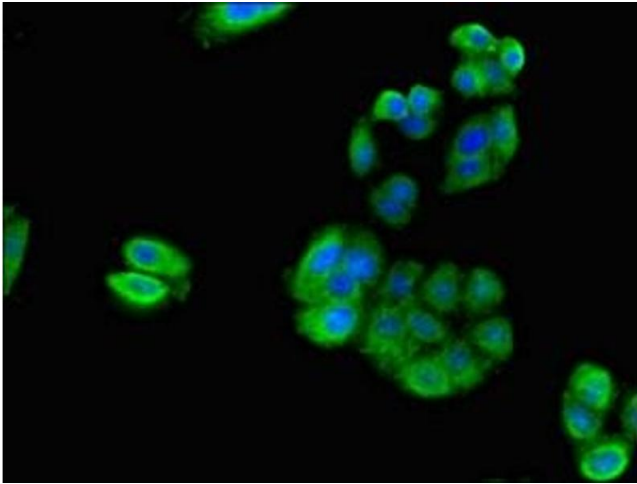
Storage Comment: Upon receipt, store at -20°C or -80°C. Avoid repeated freeze.

Images



Immunohistochemistry

Image 1. Immunohistochemistry of paraffin-embedded human endometrial cancer using ABIN7142516 at dilution of 1:100



Immunofluorescence

Image 2. Immunofluorescent analysis of HepG2 cells using ABIN7142516 at dilution of 1:100 and Alexa Fluor 488-conjugated AffiniPure Goat Anti-Rabbit IgG(H+L)