

Datasheet for ABIN7142520
anti-RPS23 antibody (AA 2-143)[Go to Product page](#)

1 Image

Overview

Quantity:	100 µg
Target:	RPS23
Binding Specificity:	AA 2-143
Reactivity:	Human
Host:	Rabbit
Clonality:	Polyclonal
Conjugate:	This RPS23 antibody is un-conjugated
Application:	ELISA, Immunofluorescence (IF)

Product Details

Immunogen:	Recombinant Human 40S ribosomal protein S23 protein (2-143AA)
Isotype:	IgG
Cross-Reactivity:	Human
Purification:	>95%, Protein G purified

Target Details

Target:	RPS23
Alternative Name:	RPS23 (RPS23 Products)
Background:	Background: cytosol, cytosolic small ribosomal subunit, membrane, nucleoplasm, ribosome, RNA binding, structural constituent of ribosome, nuclear-transcribed mRNA catabolic process,

Target Details

nonsense-mediated decay, rRNA processing, SRP-dependent cotranslational protein targeting to membrane

Aliases: 40S ribosomal protein S23 antibody, FLJ35016 antibody, Homolog of yeast ribosomal protein S28 antibody, Ribosomal protein S23 antibody, RPS 23 antibody, RPS23 antibody, RS23_HUMAN antibody, S23 antibody

UniProt: [P62266](#)

Application Details

Application Notes: Recommended dilution: IF:1:50-1:200,

Restrictions: For Research Use only

Handling

Format: Liquid

Buffer: Preservative: 0.03 % Proclin 300
Constituents: 50 % Glycerol, 0.01M PBS, pH 7.4

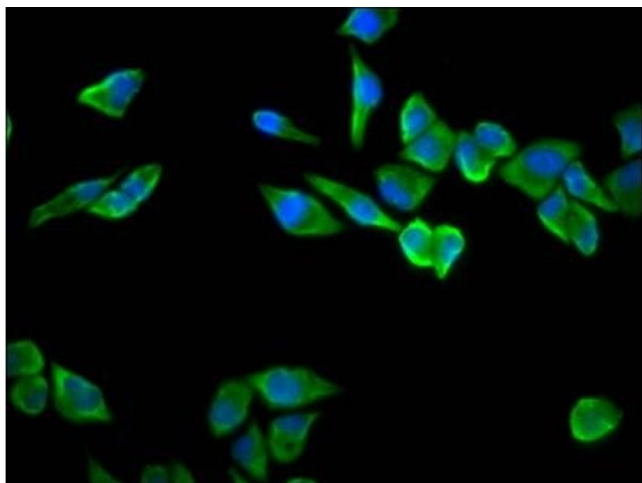
Preservative: ProClin

Precaution of Use: This product contains ProClin: a POISONOUS AND HAZARDOUS SUBSTANCE which should be handled by trained staff only.

Storage: -20 °C,-80 °C

Storage Comment: Upon receipt, store at -20°C or -80°C. Avoid repeated freeze.

Images



Immunofluorescence

Image 1. Immunofluorescence staining of HeLa cells with ABIN7142520 at 1:100, counter-stained with DAPI. The cells were fixed in 4% formaldehyde, permeabilized using 0.2% Triton X-100 and blocked in 10% normal Goat Serum. The cells were then incubated with the antibody overnight at 4°C. The secondary antibody was Alexa Fluor 488-conjugated AffiniPure Goat Anti-Rabbit IgG(H+L).