



[Go to Product page](#)

Datasheet for ABIN7142591  
**anti-SLC3A2 antibody (AA 404-630)**

1 Image

Overview

Quantity:	100 µL
Target:	SLC3A2
Binding Specificity:	AA 404-630
Reactivity:	Human
Host:	Rabbit
Clonality:	Polyclonal
Conjugate:	This SLC3A2 antibody is un-conjugated
Application:	Western Blotting (WB), ELISA

Product Details

Immunogen:	Recombinant Human 4F2 cell-surface antigen heavy chain protein (404-630AA)
Isotype:	IgG
Cross-Reactivity:	Human
Purification:	>95%, Protein G purified

Target Details

Target:	SLC3A2
Alternative Name:	SLC3A2 ( <a href="#">SLC3A2 Products</a> )
Background:	Background: Required for the function of light chain amino-acid transporters. Involved in sodium-independent, high-affinity transport of large neutral amino acids such as phenylalanine,

## Target Details

---

tyrosine, leucine, arginine and tryptophan. Involved in guiding and targeting of LAT1 and LAT2 to the plasma membrane. When associated with SLC7A6 or SLC7A7 acts as an arginine/glutamine exchanger, following an antiport mechanism for amino acid transport, influencing arginine release in exchange for extracellular amino acids. Plays a role in nitric oxide synthesis in human umbilical vein endothelial cells (HUVECs) via transport of L-arginine. Required for normal and neoplastic cell growth. When associated with SLC7A5/LAT1, is also involved in the transport of L-DOPA across the blood-brain barrier, and that of thyroid hormones triiodothyronine (T3) and thyroxine (T4) across the cell membrane in tissues such as placenta. Involved in the uptake of methylmercury (MeHg) when administered as the L-cysteine or D,L-homocysteine complexes, and hence plays a role in metal ion homeostasis and toxicity. When associated with SLC7A5 or SLC7A8, involved in the cellular activity of small molecular weight nitrosothiols, via the stereoselective transport of L-nitrosocysteine (L-CNSO) across the transmembrane. Together with ICAM1, regulates the transport activity LAT2 in polarized intestinal cells, by generating and delivering intracellular signals. When associated with SLC7A5, plays an important role in transporting L-leucine from the circulating blood to the retina across the inner blood-retinal barrier.

Aliases: 4F2 antibody, 4F2 cell surface antigen heavy chain antibody, 4F2 cell-surface antigen heavy chain antibody, 4F2 heavy chain antibody, 4F2 heavy chain antigen antibody, 4F2\_HUMAN antibody, 4F2hc antibody, 4T2HC antibody, Antigen defined by monoclonal antibody 4F2 heavy chain antibody, Antigen identified by monoclonal antibodies 4F2 TRA1.10 TROP4 and T43 antibody, CD 98 antibody, CD98 antibody, CD98 antigen antibody, CD98 heavy chain antibody, CD98HC antibody, Heavy chain antibody, Lymphocyte activation antigen 4F2 large subunit antibody, MDU 1 antibody, MDU1 antibody, Monoclonal antibody 44D7 antibody, NACAE antibody, Slc3a2 antibody, Solute carrier family 3 (activators of dibasic and neutral amino acid transport) member 2 antibody, Solute carrier family 3 member 2 antibody

---

UniProt: [P08195](#)

## Application Details

---

Application Notes: Recommended dilution: WB:1:1000-1:5000,

Restrictions: For Research Use only

## Handling

---

Format: Liquid

Buffer: Preservative: 0.03 % Proclin 300

---

## Handling

Constituents: 50 % Glycerol, 0.01M PBS, pH 7.4

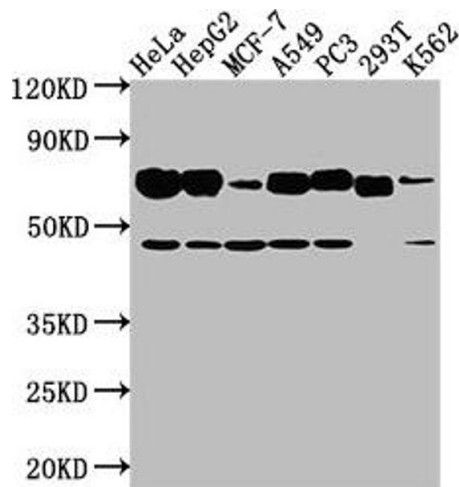
Preservative: ProClin

Precaution of Use: This product contains ProClin: a POISONOUS AND HAZARDOUS SUBSTANCE which should be handled by trained staff only.

Storage: -20 °C,-80 °C

Storage Comment: Upon receipt, store at -20°C or -80°C. Avoid repeated freeze.

## Images



### Western Blotting

**Image 1.** Western Blot Positive WB detected in: HeLa whole cell lysate, HepG2 whole cell lysate, MCF-7 whole cell lysate, A549 whole cell lysate, PC3 whole cell lysate, 293T whole cell lysate, K562 whole cell lysate All lanes: SLC3A2 antibody at 1:2000 Secondary Goat polyclonal to rabbit IgG at 1/50000 dilution Predicted band size: 68, 58, 62, 72 kDa Observed band size: 68 kDa