



[Go to Product page](#)

Datasheet for ABIN7142600
anti-ALAS1 antibody (AA 57-285)

2 Images

Overview

Quantity:	100 µg
Target:	ALAS1
Binding Specificity:	AA 57-285
Reactivity:	Human
Host:	Rabbit
Clonality:	Polyclonal
Conjugate:	This ALAS1 antibody is un-conjugated
Application:	ELISA, Immunohistochemistry (IHC)

Product Details

Immunogen:	Recombinant Human 5-aminolevulinate synthase, nonspecific, mitochondrial protein (57-285AA)
Isotype:	IgG
Cross-Reactivity:	Human
Purification:	>95%, Protein G purified

Target Details

Target:	ALAS1
Alternative Name:	ALAS1 (ALAS1 Products)
Background:	Background: cytoplasm, mitochondrial matrix, mitochondrion, nucleoplasm, 5-aminolevulinate

Target Details

synthase activity, identical protein binding, heme biosynthetic process, mitochondrion organization

Aliases: 5 aminolevulinate synthase antibody, 5 aminolevulinate synthase nonspecific mitochondrial antibody, 5 aminolevulinic acid synthase antibody, 5-aminolevulinate synthase antibody, 5-aminolevulinic acid synthase 1 antibody, Alas 1 antibody, ALAS 3 antibody, ALAS antibody, ALAS H antibody, ALAS HOUSEKEEPING TYPE antibody, ALAS N antibody, ALAS-H antibody, alaS1 antibody, ALAS3 antibody, ALASH antibody, Aminolevulinate delta synthase 1 antibody, Aminolevulinic acid synthase 1 antibody, Delta ALA synthetase antibody, Delta aminolevulinate synthase antibody, Delta-ALA synthase 1 antibody, Delta-aminolevulinate synthase 1 antibody, HEM1_HUMAN antibody, MIG 4 antibody, MIG4 antibody, Migration inducing protein 4 antibody, mitochondrial antibody, nonspecific antibody

UniProt: [P13196](#)

Pathways: [Regulation of Lipid Metabolism by PPARalpha](#)

Application Details

Application Notes: Recommended dilution: IHC:1:20-1:200,

Restrictions: For Research Use only

Handling

Format: Liquid

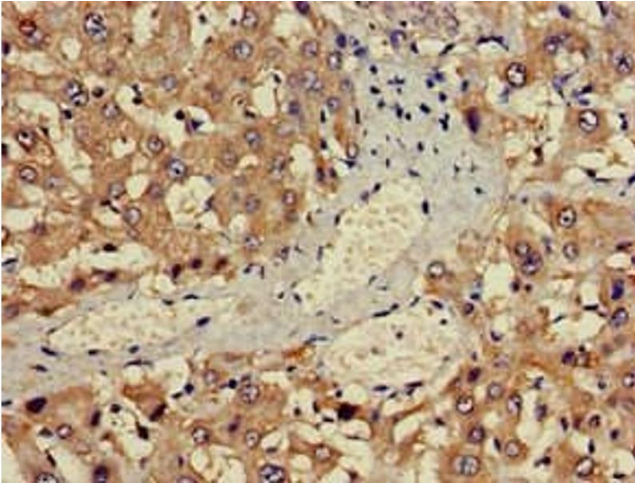
Buffer: Preservative: 0.03 % Proclin 300
Constituents: 50 % Glycerol, 0.01M PBS, pH 7.4

Preservative: ProClin

Precaution of Use: This product contains ProClin: a POISONOUS AND HAZARDOUS SUBSTANCE which should be handled by trained staff only.

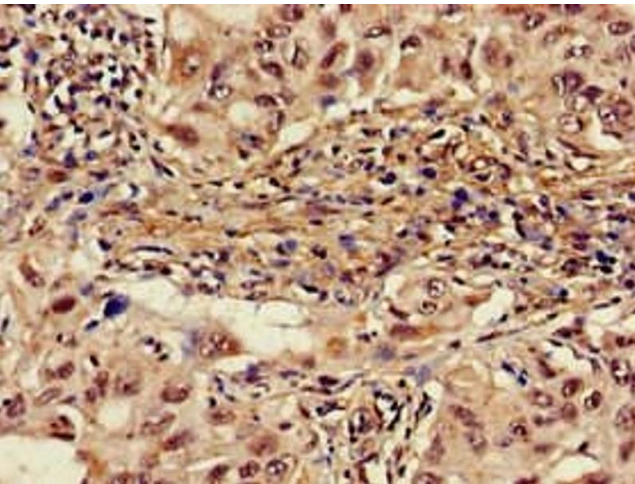
Storage: -20 °C,-80 °C

Storage Comment: Upon receipt, store at -20°C or -80°C. Avoid repeated freeze.



Immunohistochemistry

Image 1. Immunohistochemistry of paraffin-embedded human liver cancer using ABIN7142600 at dilution of 1:100



Immunohistochemistry

Image 2. Immunohistochemistry of paraffin-embedded human lung cancer using ABIN7142600 at dilution of 1:100