



[Go to Product page](#)

Datasheet for ABIN7142614

## anti-Serotonin Receptor 1A antibody (AA 230-334)

### 2 Images

#### Overview

Quantity:	100 µg
Target:	Serotonin Receptor 1A (HTR1A)
Binding Specificity:	AA 230-334
Reactivity:	Human
Host:	Rabbit
Clonality:	Polyclonal
Conjugate:	This Serotonin Receptor 1A antibody is un-conjugated
Application:	ELISA, Immunohistochemistry (IHC), Immunofluorescence (IF)

#### Product Details

Immunogen:	Recombinant Human 5-hydroxytryptamine receptor 1A protein (230-334AA)
Isotype:	IgG
Cross-Reactivity:	Human
Purification:	>95%, Protein G purified

#### Target Details

Target:	Serotonin Receptor 1A (HTR1A)
Alternative Name:	HTR1A ( <a href="#">HTR1A Products</a> )
Background:	Background: G-protein coupled receptor for 5-hydroxytryptamine (serotonin). Also functions as a receptor for various drugs and psychoactive substances. Ligand binding causes a

## Target Details

---

conformation change that triggers signaling via guanine nucleotide-binding proteins (G proteins) and modulates the activity of down-stream effectors, such as adenylate cyclase. Beta-arrestin family members inhibit signaling via G proteins and mediate activation of alternative signaling pathways. Signaling inhibits adenylate cyclase activity and activates a phosphatidylinositol-calcium second messenger system that regulates the release of Ca(2+) ions from intracellular stores. Plays a role in the regulation of 5-hydroxytryptamine release and in the regulation of dopamine and 5-hydroxytryptamine metabolism. Plays a role in the regulation of dopamine and 5-hydroxytryptamine levels in the brain, and thereby affects neural activity, mood and behavior. Plays a role in the response to anxiogenic stimuli.

Aliases: 5 HT 1A antibody, 5 HT receptor 1A antibody, 5 HT1A antibody, 5 HT1A receptor antibody, 5 hydroxytryptamine (serotonin) receptor 1A antibody, 5 hydroxytryptamine (serotonin) receptor 1A G protein coupled antibody, 5 hydroxytryptamine receptor 1A antibody, 5-HT-1A antibody, 5-HT1A antibody, 5-hydroxytryptamine receptor 1A antibody, 5HT 1A antibody, 5HT 1A receptor antibody, 5HT receptor 1A antibody, 5HT1a antibody, 5HT1A\_HUMAN antibody, ADRB2RL1 antibody, ADRBRL1 antibody, G 21 antibody, G protein coupled receptor antibody, G-21 antibody, Gpcr 18 antibody, Gpcr18 antibody, Guanine nucleotide binding regulatory protein-coupled receptor antibody, Htr1a antibody, PFMCD antibody, Serotonin 1A receptor antibody, Serotonin 5HT1A receptor antibody, Serotonin receptor 1A antibody

---

UniProt: [P08908](#)

---

Pathways: [JAK-STAT Signaling](#), [Synaptic Membrane](#), [Feeding Behaviour](#)

## Application Details

---

Application Notes: Recommended dilution: IHC:1:20-1:200, IF:1:50-1:200,

---

Restrictions: For Research Use only

## Handling

---

Format: Liquid

---

Buffer: Preservative: 0.03 % Proclin 300  
Constituents: 50 % Glycerol, 0.01M PBS, pH 7.4

---

Preservative: ProClin

---

Precaution of Use: This product contains ProClin: a POISONOUS AND HAZARDOUS SUBSTANCE which should be handled by trained staff only.

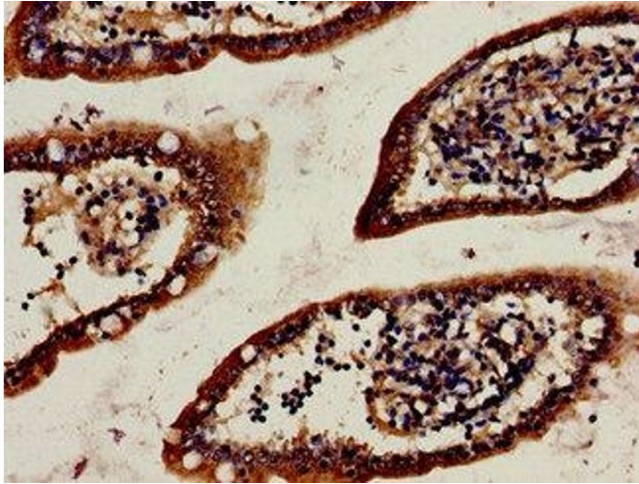
---

## Handling

Storage: -20 °C,-80 °C

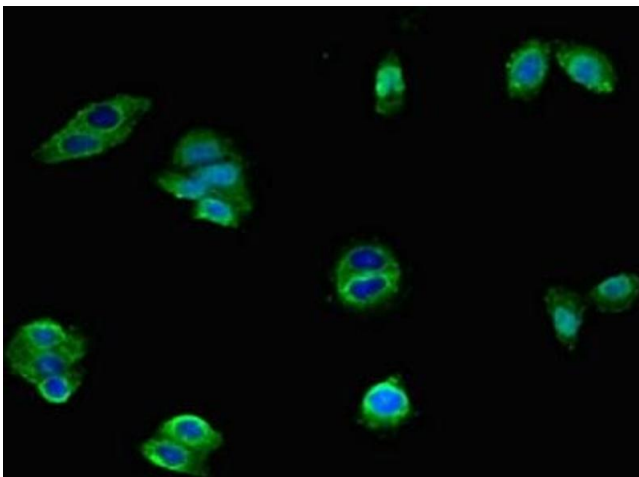
Storage Comment: Upon receipt, store at -20°C or -80°C. Avoid repeated freeze.

## Images



### Immunohistochemistry

**Image 1.** Immunohistochemistry analysis of human small intestine tissue using ABIN7142614 at dilution of 1:100



### Immunofluorescence

**Image 2.** Immunofluorescent analysis of HepG2 cells using ABIN7142614 at dilution of 1:100 and Alexa Fluor 488-conjugated AffiniPure Goat Anti-Rabbit IgG(H+L)