



[Go to Product page](#)

Datasheet for ABIN7142693

## anti-PFKFB2 antibody (AA 360-505)

### 3 Images

#### Overview

Quantity:	100 µg
Target:	PFKFB2
Binding Specificity:	AA 360-505
Reactivity:	Human
Host:	Rabbit
Clonality:	Polyclonal
Conjugate:	This PFKFB2 antibody is un-conjugated
Application:	Western Blotting (WB), ELISA, Immunohistochemistry (IHC), Immunofluorescence (IF)

#### Product Details

Immunogen:	Recombinant Human 6-phosphofructo-2-kinase/fructose-2,6-bisphosphatase 2 protein (360-505AA)
Isotype:	IgG
Cross-Reactivity:	Human, Rat
Purification:	>95%, Protein G purified

#### Target Details

Target:	PFKFB2
Alternative Name:	PFKFB2 ( <a href="#">PFKFB2 Products</a> )
Background:	Background: Synthesis and degradation of fructose 2,6-bisphosphate.

## Target Details

---

Aliases: 6-phosphofructo 2-kinase/fructose 2,6-bisphosphatase 2 antibody, 6-bisphosphatase antibody, 6-P2ase 2 antibody, 6-P2ASE heart-type isozyme antibody, 6PF-2-K/Fru-2 6-P2ASE heart-type isozyme antibody, 6PF-2-K/Fru-2 antibody, 6PF-2-K/Fru-26-P2ase 2 antibody, 6PF-2-K/Fru-26-P2ase heart-type isozyme antibody, F262\_HUMAN antibody, Fructose 2,6-bisphosphatase cardiac isozyme antibody, Fructose-2 antibody, PFK-2/FBPase 2 antibody, PFK/FBPase 2 antibody, PFKFB cardiac antibody, PFKFB2 antibody

UniProt: [O60825](#)

Pathways: [PI3K-Akt Signaling](#), [Positive Regulation of Peptide Hormone Secretion](#), [Regulation of Carbohydrate Metabolic Process](#)

## Application Details

---

Application Notes: Recommended dilution: WB:1:500-1:5000, IHC:1:20-1:200, IF:1:50-1:200,

Restrictions: For Research Use only

## Handling

---

Format: Liquid

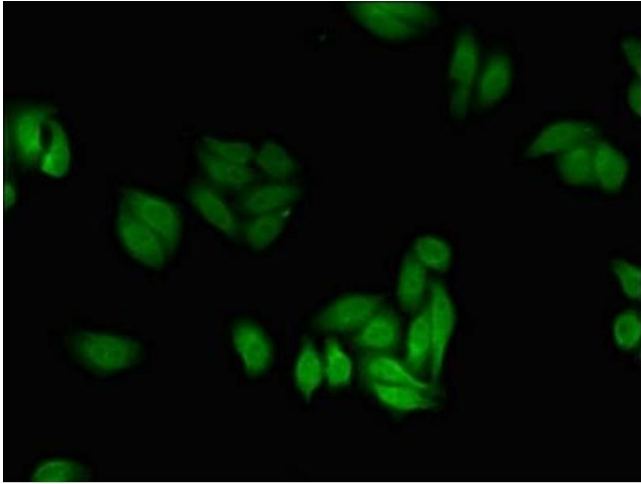
Buffer: Preservative: 0.03 % Proclin 300  
Constituents: 50 % Glycerol, 0.01M PBS, PH 7.4

Preservative: ProClin

Precaution of Use: This product contains ProClin: a POISONOUS AND HAZARDOUS SUBSTANCE which should be handled by trained staff only.

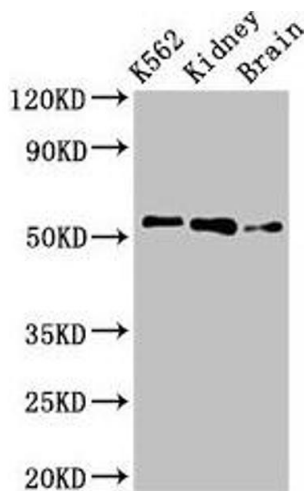
Storage: -20 °C, -80 °C

Storage Comment: Upon receipt, store at -20°C or -80°C. Avoid repeated freeze.



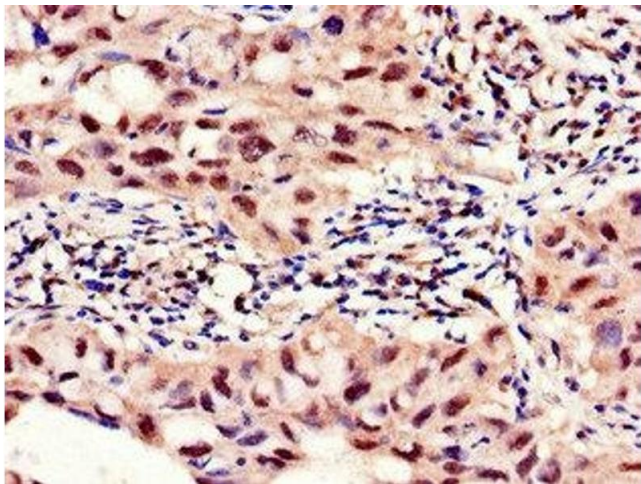
### Immunofluorescence

**Image 1.** Immunofluorescent analysis of HepG2 cells using ABIN7142693 at dilution of 1:100 and Alexa Fluor 488-conjugated AffiniPure Goat Anti-Rabbit IgG(H+L)



### Western Blotting

**Image 2.** Western Blot Positive WB detected in: K562 whole cell lysate, Rat kidney tissue, Rat brain tissue All lanes: PFKFB2 antibody at 3 µg/mL Secondary Goat polyclonal to rabbit IgG at 1/50000 dilution Predicted band size: 59, 55 kDa Observed band size: 55 kDa



### Immunohistochemistry

**Image 3.** Immunohistochemistry of paraffin-embedded human lung cancer using ABIN7142693 at dilution of 1:100