

Datasheet for ABIN7142736
anti-RPL11 antibody (AA 3-178)

3 Images

[Go to Product page](#)

Overview

Quantity:	100 µg
Target:	RPL11
Binding Specificity:	AA 3-178
Reactivity:	Human
Host:	Rabbit
Clonality:	Polyclonal
Conjugate:	This RPL11 antibody is un-conjugated
Application:	ELISA, Immunofluorescence (IF), Immunohistochemistry (IHC)

Product Details

Immunogen:	Recombinant Human 60S ribosomal protein L11 protein (3-178AA)
Isotype:	IgG
Cross-Reactivity:	Human
Purification:	>95%, Protein G purified

Target Details

Target:	RPL11
Alternative Name:	RPL11 (RPL11 Products)
Background:	60S ribosomal protein L11 antibody, Cell growth inhibiting protein 34 antibody, Cell growth inhibiting protein34 antibody, CLL associated antigen KW 12 antibody, CLL associated antigen

Target Details

KW12 antibody, CLL-associated antigen KW-12 antibody, DBA 7 antibody, DBA7 antibody, GIG 34 antibody, GIG34 antibody, L11 antibody, Ribosomal protein L11 antibody, RL11_HUMAN antibody, RPL 11 antibody, Rpl11 antibody

UniProt: [P62913](#)

Application Details

Application Notes: Recommended dilution: IHC:1:200-1:500, IF:1:50-1:200,

Restrictions: For Research Use only

Handling

Format: Liquid

Buffer: Preservative: 0.03 % Proclin 300
Constituents: 50 % Glycerol, 0.01M PBS, PH 7.4

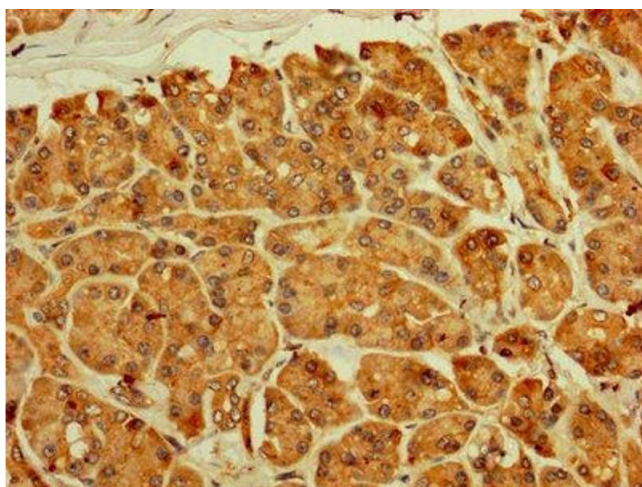
Preservative: ProClin

Precaution of Use: This product contains ProClin: a POISONOUS AND HAZARDOUS SUBSTANCE which should be handled by trained staff only.

Storage: -20 °C,-80 °C

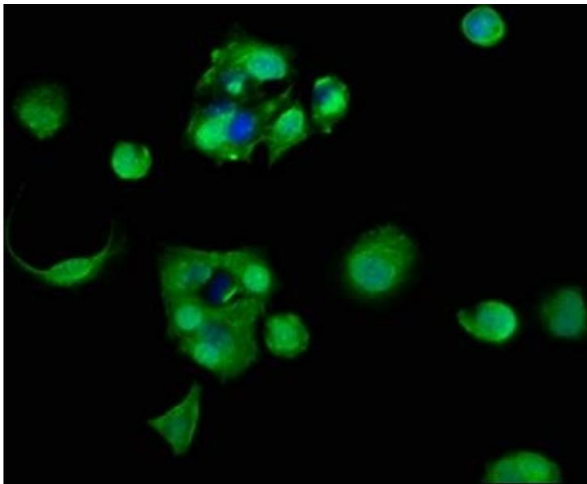
Storage Comment: Upon receipt, store at -20°C or -80°C. Avoid repeated freeze.

Images



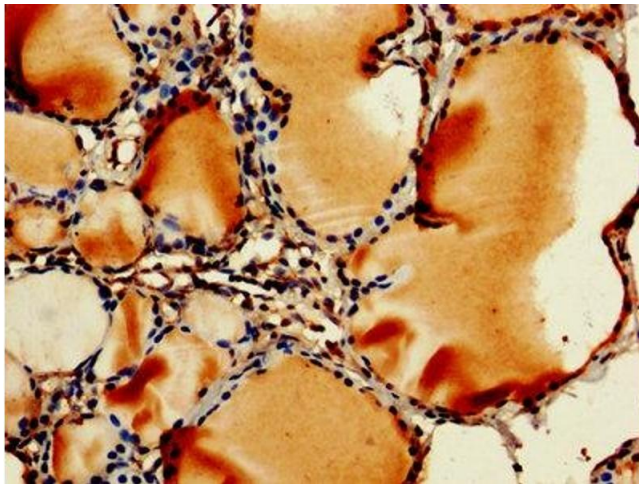
Immunohistochemistry

Image 1. IHC image of ABIN7142736 diluted at 1:250 and staining in paraffin-embedded human pancreatic tissue performed on a Leica Bond™ system. After dewaxing and hydration, antigen retrieval was mediated by high pressure in a citrate buffer (pH 6.0). Section was blocked with 10% normal goat serum 30min at RT. Then primary antibody (1% BSA) was incubated at 4°C overnight. The primary is detected by a biotinylated secondary antibody and visualized using an HRP conjugated SP system.



Immunofluorescence

Image 2. Immunofluorescence staining of MCF-7 cells with ABIN7142736 at 1:83, counter-stained with DAPI. The cells were fixed in 4% formaldehyde, permeabilized using 0.2% Triton X-100 and blocked in 10% normal Goat Serum. The cells were then incubated with the antibody overnight at 4°C. The secondary antibody was Alexa Fluor 488-conjugated AffiniPure Goat Anti-Rabbit IgG(H+L).



Immunohistochemistry

Image 3. IHC image of ABIN7142736 diluted at 1:250 and staining in paraffin-embedded human thyroid tissue performed on a Leica Bond™ system. After dewaxing and hydration, antigen retrieval was mediated by high pressure in a citrate buffer (pH 6.0). Section was blocked with 10% normal goat serum 30min at RT. Then primary antibody (1% BSA) was incubated at 4°C overnight. The primary is detected by a biotinylated secondary antibody and visualized using an HRP conjugated SP system.