



[Go to Product page](#)

Datasheet for ABIN7142776
anti-RPL24 antibody (AA 1-157)

1 Image

Overview

Quantity:	100 µL
Target:	RPL24
Binding Specificity:	AA 1-157
Reactivity:	Human
Host:	Rabbit
Clonality:	Polyclonal
Conjugate:	This RPL24 antibody is un-conjugated
Application:	Western Blotting (WB), ELISA

Product Details

Immunogen:	Recombinant Human 60S ribosomal protein L24 protein (1-157AA)
Isotype:	IgG
Cross-Reactivity:	Human
Purification:	>95%, Protein G purified

Target Details

Target:	RPL24
Alternative Name:	RPL24 (RPL24 Products)
Background:	Background: cytoplasm, cytosol, cytosolic large ribosomal subunit, extracellular exosome, membrane, cadherin binding, RNA binding, structural constituent of ribosome, assembly of

Target Details

large subunit precursor of preribosome, nuclear-transcribed mRNA catabolic process, nonsense-mediated decay.

Aliases: 60S ribosomal protein L24 antibody, 60S ribosomal protein L30 antibody, L24 antibody, Ribosomal protein L24 antibody, Ribosomal protein L30 antibody, RL24_HUMAN antibody, RPL 24 antibody, RPL24 antibody

UniProt: [P83731](#)

Pathways: [Ribonucleoprotein Complex Subunit Organization](#), [Ribosome Assembly](#)

Application Details

Application Notes: Recommended dilution: WB:1:1000-1:5000,

Restrictions: For Research Use only

Handling

Format: Liquid

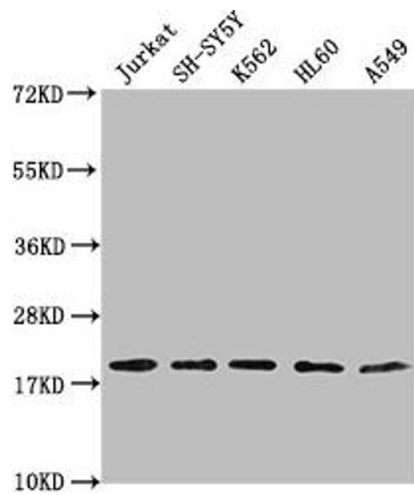
Buffer: Preservative: 0.03 % Proclin 300
Constituents: 50 % Glycerol, 0.01M PBS, pH 7.4

Preservative: ProClin

Precaution of Use: This product contains ProClin: a POISONOUS AND HAZARDOUS SUBSTANCE which should be handled by trained staff only.

Storage: -20 °C,-80 °C

Storage Comment: Upon receipt, store at -20°C or -80°C. Avoid repeated freeze.



Western Blotting

Image 1. Western Blot Positive WB detected in: Jurkat whole cell lysate, SH-SY5Y whole cell lysate, K562 whole cell lysate, HL-60 whole cell lysate, A549 whole cell lysate
All lanes: RPL24 antibody at 1:2000 Secondary Goat polyclonal to rabbit IgG at 1/50000 dilution Predicted band size: 18 kDa Observed band size: 18 kDa