



[Go to Product page](#)

Datasheet for ABIN7142788  
**anti-RPL27 antibody (AA 2-136)**

3 Images

### Overview

Quantity:	100 µg
Target:	RPL27
Binding Specificity:	AA 2-136
Reactivity:	Human
Host:	Rabbit
Clonality:	Polyclonal
Conjugate:	This RPL27 antibody is un-conjugated
Application:	Western Blotting (WB), ELISA, Immunohistochemistry (IHC), Immunofluorescence (IF)

### Product Details

Immunogen:	Recombinant Human 60S ribosomal protein L27 protein (2-136AA)
Isotype:	IgG
Cross-Reactivity:	Human
Purification:	>95%, Protein G purified

### Target Details

Target:	RPL27
Alternative Name:	RPL27 ( <a href="#">RPL27 Products</a> )
Background:	Background: 60S ribosomal protein L27 is a protein that in humans is encoded by the RPL27 gene. Ribosomes, the organelles that catalyze protein synthesis, consist of a small 40S subunit

## Target Details

---

and a large 60S subunit. Together these subunits are composed of 4 RNA species and approximately 80 structurally distinct proteins. This gene encodes a ribosomal protein that is a component of the 60S subunit. The protein belongs to the L27E family of ribosomal proteins. It is located in the cytoplasm. As is typical for genes encoding ribosomal proteins, there are multiple processed pseudogenes of this gene dispersed through the genome.

Aliases: RPL27 antibody, 60S ribosomal protein L27 antibody, Large ribosomal subunit protein eL27 antibody

---

UniProt: [P61353](#)

## Application Details

---

Application Notes: Recommended dilution: WB:1:500-1:2000, IHC:1:20-1:200, IF:1:50-1:200,

Restrictions: For Research Use only

## Handling

---

Format: Liquid

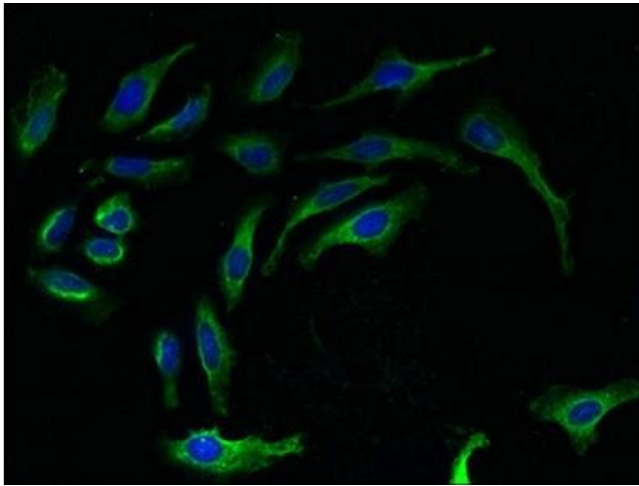
Buffer: Preservative: 0.03 % Proclin 300  
Constituents: 50 % Glycerol, 0.01M PBS, PH 7.4

Preservative: ProClin

Precaution of Use: This product contains ProClin: a POISONOUS AND HAZARDOUS SUBSTANCE which should be handled by trained staff only.

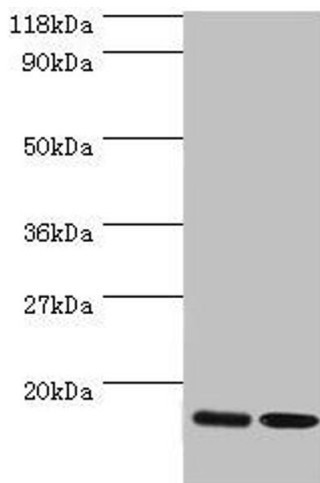
Storage: -20 °C,-80 °C

Storage Comment: Upon receipt, store at -20°C or -80°C. Avoid repeated freeze.



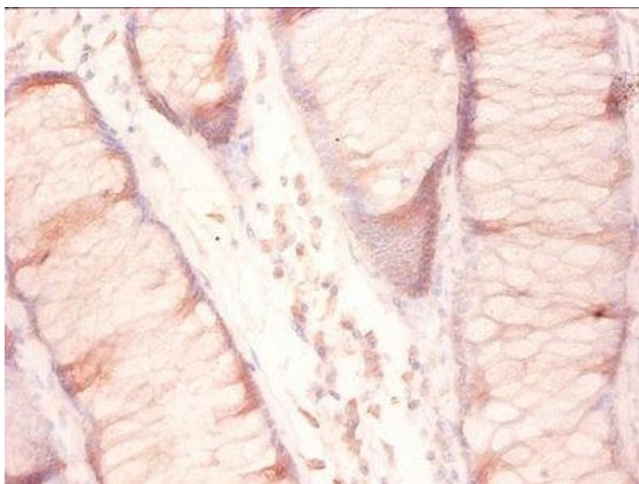
### Immunofluorescence

**Image 1.** Immunofluorescent analysis of HeLa cells using ABIN7142788 at dilution of 1:100 and Alexa Fluor 488-conjugated AffiniPure Goat Anti-Rabbit IgG(H+L)



### Western Blotting

**Image 2.** Western blot All lanes: RPL27 antibody at 2 µg/mL  
Lane 1: EC109 whole cell lysate Lane 2: 293T whole cell lysate  
Secondary Goat polyclonal to rabbit IgG at 1/15000 dilution  
Predicted band size: 16 kDa Observed band size: 16 kDa



### Immunohistochemistry

**Image 3.** Immunohistochemistry of paraffin-embedded human colon cancer using ABIN7142788 at dilution of 1:50