



[Go to Product page](#)

Datasheet for ABIN7142793  
**anti-RPL28 antibody (AA 2-137) (Biotin)**

2 Images

Overview

Quantity:	100 µg
Target:	RPL28
Binding Specificity:	AA 2-137
Reactivity:	Human
Host:	Rabbit
Clonality:	Polyclonal
Conjugate:	This RPL28 antibody is conjugated to Biotin
Application:	ELISA, Immunohistochemistry (IHC)

Product Details

Immunogen:	Recombinant Human 60S ribosomal protein L28 protein (2-137AA)
Isotype:	IgG
Cross-Reactivity:	Human
Purification:	>95%, Protein G purified

Target Details

Target:	RPL28
Alternative Name:	RPL28 ( <a href="#">RPL28 Products</a> )
Background:	60S ribosomal protein L28 antibody, FLJ 43307 antibody, FLJ43307 antibody, L 28 antibody, L28 antibody, Ribosomal protein L28 antibody, RL28_HUMAN antibody, RPL 28 antibody, rpl28

## Target Details

antibody

UniProt: [P46779](#)

## Application Details

Application Notes: Recommended dilution: IHC:1:20-1:200,

Restrictions: For Research Use only

## Handling

Format: Liquid

Buffer: Preservative: 0.03 % Proclin 300  
Constituents: 50 % Glycerol, 0.01M PBS, PH 7.4

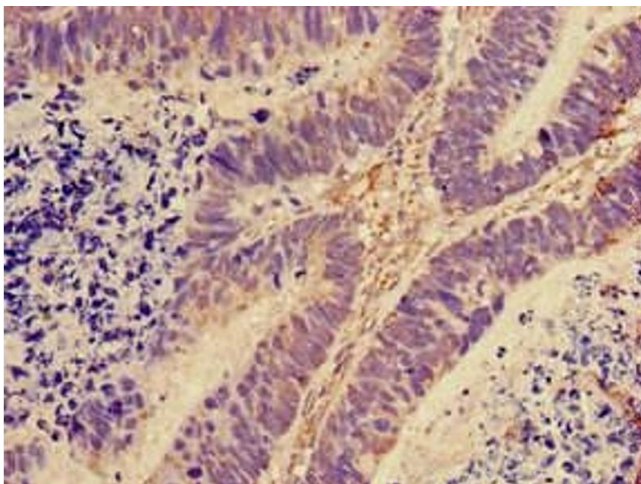
Preservative: ProClin

Precaution of Use: This product contains ProClin: a POISONOUS AND HAZARDOUS SUBSTANCE which should be handled by trained staff only.

Storage: -20 °C,-80 °C

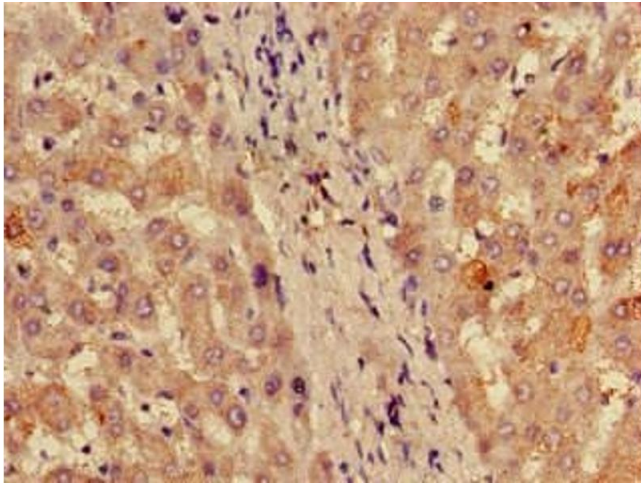
Storage Comment: Upon receipt, store at -20°C or -80°C. Avoid repeated freeze.

## Images



### Immunohistochemistry

**Image 1.** Immunohistochemistry of paraffin-embedded human ovarian cancer using ABIN7142793 at dilution of 1:100



### Immunohistochemistry

**Image 2.** Immunohistochemistry of paraffin-embedded human liver tissue using ABIN7142793 at dilution of 1:100