



[Go to Product page](#)

Datasheet for ABIN7142825
anti-RPL4 antibody (AA 12-91)

3 Images

Overview

Quantity:	100 µg
Target:	RPL4
Binding Specificity:	AA 12-91
Reactivity:	Human
Host:	Rabbit
Clonality:	Polyclonal
Conjugate:	This RPL4 antibody is un-conjugated
Application:	Western Blotting (WB), ELISA, Immunohistochemistry (IHC), Immunofluorescence (IF)

Product Details

Immunogen:	Recombinant Human 60S ribosomal protein L4 protein (12-91AA)
Isotype:	IgG
Cross-Reactivity:	Human
Purification:	>95%, Protein G purified

Target Details

Target:	RPL4
Alternative Name:	RPL4 (RPL4 Products)
Background:	Background: cytoplasm, cytosol, cytosolic large ribosomal subunit, extracellular exosome, focal adhesion, intracellular ribonucleoprotein complex, membrane, nucleolus, nucleus, poly(A) RNA

Target Details

binding

Aliases: 60S ribosomal protein L1 antibody, 60S ribosomal protein L4 antibody, L4 antibody, Ribosomal protein L4 antibody, RL4_HUMAN antibody, rpl4 antibody

UniProt: [P36578](#)

Application Details

Application Notes: Recommended dilution: WB:1:500-1:5000, IHC:1:20-1:200, IF:1:50-1:200,

Restrictions: For Research Use only

Handling

Format: Liquid

Buffer: Preservative: 0.03 % Proclin 300
Constituents: 50 % Glycerol, 0.01M PBS, pH 7.4

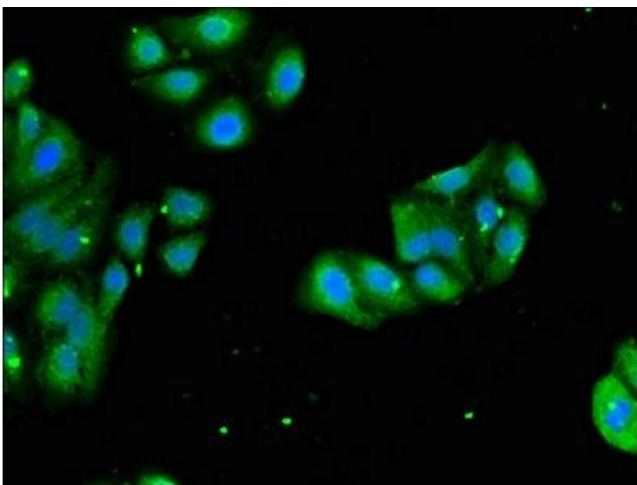
Preservative: ProClin

Precaution of Use: This product contains ProClin: a POISONOUS AND HAZARDOUS SUBSTANCE which should be handled by trained staff only.

Storage: -20 °C,-80 °C

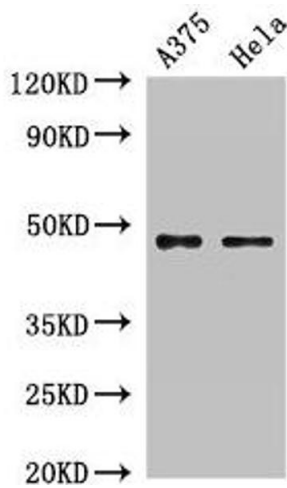
Storage Comment: Upon receipt, store at -20°C or -80°C. Avoid repeated freeze.

Images



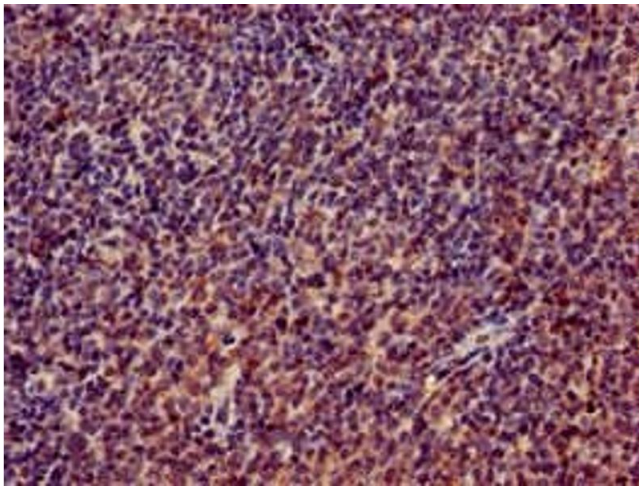
Immunofluorescence

Image 1. Immunofluorescent analysis of HepG2 cells using ABIN7142825 at dilution of 1:100 and Alexa Fluor 488-conjugated AffiniPure Goat Anti-Rabbit IgG(H+L)



Western Blotting

Image 2. Western Blot Positive WB detected in: A375 whole cell lysate, HeLa whole cell lysate All lanes: RPL4 antibody at 2 µg/mL Secondary Goat polyclonal to rabbit IgG at 1/50000 dilution Predicted band size: 48 kDa Observed band size: 48 kDa



Immunohistochemistry

Image 3. Immunohistochemistry of paraffin-embedded human lymph node tissue using ABIN7142825 at dilution of 1:100