



[Go to Product page](#)

Datasheet for ABIN7142829
anti-RPL5 antibody (AA 2-297)

2 Images

Overview

Quantity:	100 µg
Target:	RPL5
Binding Specificity:	AA 2-297
Reactivity:	Human
Host:	Rabbit
Clonality:	Polyclonal
Conjugate:	This RPL5 antibody is un-conjugated
Application:	Western Blotting (WB), ELISA, Immunohistochemistry (IHC)

Product Details

Immunogen:	Recombinant Human 60S ribosomal protein L5 protein (2-297AA)
Isotype:	IgG
Cross-Reactivity:	Human
Purification:	>95%, Protein G purified

Target Details

Target:	RPL5
Alternative Name:	RPL5 (RPL5 Products)
Background:	Background: Required for rRNA maturation and formation of the 60S ribosomal subunits. This protein binds 5S RNA.

Target Details

Aliases: 60S ribosomal protein L5 antibody, DBA6 antibody, L5 antibody, MSTP030 antibody, PPP1R135 antibody, protein phosphatase 1, regulatory subunit 135 antibody, Ribosomal protein L5 antibody, RL5 antibody, RL5_HUMAN antibody, RP L5 antibody, RPL 5 antibody, RPL5 antibody, U21 RNA antibody, U21RNA antibody

UniProt: [P46777](#)

Application Details

Application Notes: Recommended dilution: WB:1:1000-1:5000, IHC:1:20-1:200,

Restrictions: For Research Use only

Handling

Format: Liquid

Buffer: Preservative: 0.03 % Proclin 300
Constituents: 50 % Glycerol, 0.01M PBS, PH 7.4

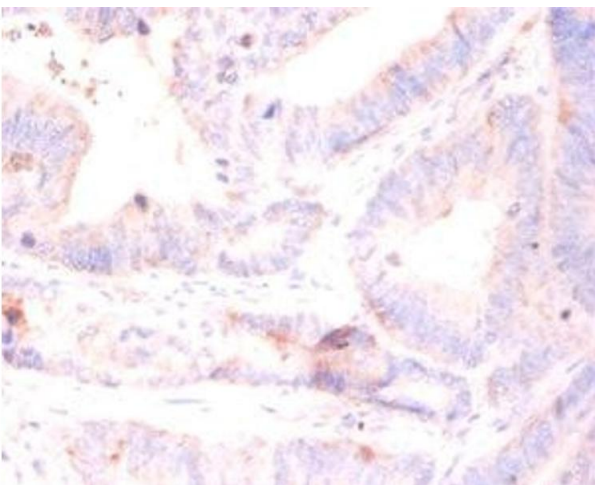
Preservative: ProClin

Precaution of Use: This product contains ProClin: a POISONOUS AND HAZARDOUS SUBSTANCE which should be handled by trained staff only.

Storage: -20 °C,-80 °C

Storage Comment: Upon receipt, store at -20°C or -80°C. Avoid repeated freeze.

Images



Immunohistochemistry

Image 1. Immunohistochemistry of paraffin-embedded human colon cancer using ABIN7142829 at dilution of 1:50



Western Blotting

Image 2. Western blot All lanes: RPL5 antibody at 2 $\mu\text{g}/\text{mL}$ + EC109 whole cell lysate Secondary Goat polyclonal to rabbit IgG at 1/15000 dilution Predicted band size: 35 kDa Observed band size: 35 kDa